

BENNINGTON

WILLIAM H MORSE STATE (DDH)(KDDH) 3 W UTC-5(-4DT) N42°53.48' W73°14.78'

NEW YORK
L-32G, 33B, 34J
IAP

827 B NOTAM FILE DDH

RWY 13-31: H3704X75 (ASPH) S-12.5 MIRL 0.9% up SE

RWY 13: REIL. PAPI(P4L)—GA 4.0° TCH 45'. Hill.

RWY 31: REIL. PAPI(P4R)—GA 4.0° TCH 45'. Ground. Rgt tfc.

SERVICE: S4 **FUEL** 100LL, JET A **OX** 3 **LGT** ACTVT REIL Rwy 13 and 31; PAPI Rwy 13 and 13; MIRL Rwy 13-31—CTAF.

NOISE: Noise Abatement procedures in effect. Avoid overflying homes SE of arpt. Noise sensitive area AER 31. Preferred use rwy is Rwy 13. If practical acft departing Rwy 13 use best climb rate and when above 400' AGL turn left within 1 mile of departure end of Rwy 13.

AIRPORT REMARKS: Attended Mon-Fri 1300-2100Z. Sat-Sun on call. Geese on and invof arpt. Rwy 13 thld hazardous bird activity. For arpt attendance call 1-802-442-5503 or 1-802-595-5830 for on-call svcs only. Rwy conditions may not be monitored or reported when the arpt is unattended. 100LL self-svc avbl 24 hrs. Mountains all quadrants. Tfc pat ops prohibited S of Rwy 13 and Rwy 31. Cold temperature airport. Altitude correction required at or below -14C.

AIRPORT MANAGER: 802-585-5586

WEATHER DATA SOURCES: ASOS 135.925 (802) 442-6059.

COMMUNICATIONS: CTAF/UNICOM 122.8

Ⓡ **ALBANY APP/DEP CON** 132.825

GCO 121.725 (BTV CD and FLIGHT SERVICES. OTS INDEFLY)

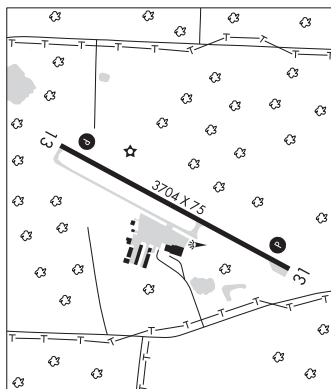
CLEARANCE DELIVERY PHONE: For CD ctc Albany Apch at 518-862-2299.

RADIO AIDS TO NAVIGATION: NOTAM FILE BTV.

CAMBRIDGE (L) (L) VOR/DME 115.0 CAM Chan 97 N42°59.66' W73°20.64' 159° 7.5 NM to fld. 1490/14W.

DME portion unusable:

040°-130° blo 9,000'



BURLINGTON

PATRICK LEAHY BURLINGTON INTL (BTV)(KBTV) P (ANG ARNG) 3 E UTC-5(-4DT) N44°28.32'

MONTREAL
H-11C, 12K, L-32G
IAP, AD

W73°09.20'

335 B AOE Class I, ARFF Index B NOTAM FILE BTV

RWY 15-33: H8319X150 (ASPH-CONC-GRVD) S-100, D-175, 2S-175, 2D-355 PCN 39 F/A/X/T HIRL

RWY 15: MALS. PAPI(P4R)—GA 3.0° TCH 51'. RVR-TR Trees. 0.6% up.

RWY 33: MALS. PAPI(P4R)—GA 3.2° TCH 53'. RVR-TR Thld dsplcd 500'. Trees.

RWY 01-19: H4112X75 (ASPH) S-30, D-40, 2D-60 PCN 23 F/A/X/T MIRL

RWY 01: PAPI(P4L)—GA 4.0° TCH 27'. Thld dsplcd 225'. Tree.

RWY 19: PAPI(P4R)—GA 3.5° TCH 47'. Thld dsplcd 500'.

LAND AND HOLD—SHORT OPERATIONS

LDG RWY	HOLD—SHORT POINT	AVBL LDG DIST
RWY 01	15-33	2600
RWY 15	TXY A	3600
RWY 33	01-19	2900

RUNWAY DECLARED DISTANCE INFORMATION

RWY 01:	TORA-3611	TODA-3611	ASDA-3611	LDA-3386
RWY 15:	TORA-7820	TODA-7820	ASDA-7820	LDA-7820
RWY 19:	TORA-4111	TODA-4111	ASDA-4111	LDA-3386
RWY 33:	TORA-8320	TODA-8320	ASDA-8320	LDA-7820

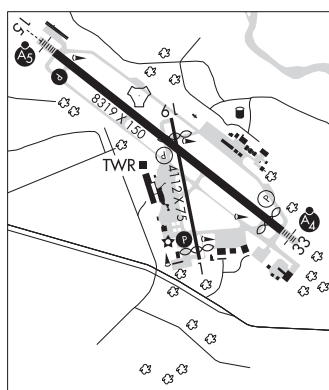
ARRESTING GEAR/SYSTEM

RWY 15 TYPE H/BAK-12A (B) 1499 FT.

TYPE H/BAK-12A (B) 1500 FT. **RWY 33**

SERVICE: S4 **FUEL** 100LL, JET A **OX** 1, 3 **LGT** Dusk-Dawn. ACTVT MALS. Rwy 15; MALS. Rwy 33; PAPI Rwy 01 and 15; MIRL Rwy 01-19; HIRL Rwy 15-33; all twys—CTAF. PAPI Rwy 19 and 33 opr consly. NSTD twy lgts on Twy E.

MILITARY—A-GEAR—Type H/BAK-12A(B) AER 33 lctd 1000 ft fm dthr. Rwy 15 & Rwy 33 A-G housings are non-frangible (26 in avb grd level) lctd 250 ft fm rwy cntn. **JASU** 5(MD-4) 9(M32A-60) **FUEL** J8(Mil) 100LL, A **FLUID** SP LOX **OIL** O-133-148(Mil) SOAP.



CONTINUED ON NEXT PAGE

CONTINUED FROM PRECEDING PAGE

AIRPORT REMARKS: Attended continuously. Birds & deer on & invof arpt. FBO clsd 0700–1400Z \ddagger dly, exc 1 hr PPR 802–863–3626. Fighter acft rstd to tkf window of Mon–Sat 1330–0330Z \ddagger , Sun 1700–0330Z \ddagger . Caution: generating plant 2 NM from AER 15 produces steam which may obscure visibility on final apch. CAUTION: Phase II wildlife actvy durg migration, Mar–May and Aug 15–Nov 15. Acr ramp not avbl for pvt & chtr acft. Twy A btn Twy G and Twy C clsd to acft wingspan more than 118 ft exc 1 hr PPR 802–316–6014 dly. Twy L CLSD to acft over 60,000 lbs. Twy K CLSD to acft wingspan more than 49' and acft more than 12,500 lbs. Twys D, E, F and N clsd to civilian ops. Twys D, E, F, N, ANG and RNG ramps have unctl vehicle and acft. Twy M avbl for seasonal use, clsd drg winter months. ANG: Opr 1030–2100Z \ddagger weekdays, exc hol, clsd Sat–Mon. PPR for fuel/prkg, ctc ANG ops DSN 220–5213/5920/5267 C802–660–5213. All tsnt acft enr Ethan Allen trng site and R6501A must stop at AASF for rqr safety brief. ARFF avbl 24 hrs a day. A–Gear Type H/BAK–12A(B) AER 33 lctd 1000 ft fm dthr. Type H/BAK 12A(B) cable raised by twr on pilot req only. Fighter acft no low apchs. All other mil acft ltd to 2 practice apchs. Do not fly over hospital aprxly 1.5 NM west of Rwy 15 apch end. Rwy 01–19 south of Rwy 15–33 int to Twy C, single wheel 100, dual tandem wheel 355, south of Twy C int to south end of rwy, single wheel 30, dual wheel 60. Cold temperature airport. Altitude correction required at or below –10C. Ldg fee. Fee for itinerant acft greater than 6000 lbs. Beta Helipad pvt use only. Twy G btn J and valley ramp clsd to acft wingspan gtr than 156'.

AIRPORT MANAGER: 802-863-2874

WEATHER DATA SOURCES: ASOS 123.8 (802) 657–4490.

COMMUNICATIONS: ATIS 123.8 (802–657–4424) CTAF 118.3 UNICOM 122.95

RCO 122.2 (BURLINGTON RADIO)

Ⓜ APP/DEP CON 121.1 (1030–0500Z \ddagger)

Ⓜ BOSTON CENTER APP/DEP CON 120.35 (0500–1030Z \ddagger)

TOWER 118.3 (1030–0500Z \ddagger) GND CON 126.3 CLNC DEL 119.15 ANG OPS 134.1 41.2

CLEARANCE DELIVERY PHONE: For CD if twr clsd & una to ctc FSS freq, ctc Boston ARTCC at 603-879-6859.

AIRSPACE: CLASS C svc ctc APP CON svc 1030–0500Z \ddagger ; other times CLASS E.

VOR TEST FACILITY (VOT) 109.0

RADIO AIDS TO NAVIGATION: NOTAM FILE BTV.

BURLINGTON (VL) (L) VORW/DME 117.5 BTW Chan 122 N44°23.83' W73°10.96' 031° 4.7 NM to fld. 417/15W.

VOR unusable:

030°–086° byd 40 NM

075°–132° byd 30 NM blo 9,000'

087°–097° byd 40 NM blo 9,000'

087°–097° byd 49 NM

098°–169° byd 40 NM

133°–165° byd 30 NM blo 8,000'

170°–180° byd 40 NM blo 5,800'

170°–180° byd 47 NM

181°–196° byd 40 NM

244°–292° byd 40 NM

340°–010° byd 40 NM

DME unusable:

075°–132° byd 30 NM blo 9,000'

133°–165° byd 30 NM blo 8,000'

BURLINGTON (L) TACAN Chan 71 BJA (112.4) N44°28.62' W73°09.41' at fld. 308/15W.

TACAN AZIMUTH unusable:

010°–139°

140°–160° byd 29 NM

205°–208°

DME unusable:

010°–139°

140°–160° byd 29 NM

161°–227°

350°–009°

HERRO NDB (LOMW) 382 BT N44°31.94' W73°14.97' 146° 5.5 NM to fld. 130/15W.

ILS/DME 110.3 I–BTV Chan 40 Rwy 15. Class IB. LOM HERRO NDB. Unmonitored when ATCT clsd. LOC unusable byd 28° right of course.

ILS/DME 110.3 I–VOE Chan 40 Rwy 33. Class IA. LOC unusable byd 10 NM blo 2,700' LOC unusable byd 13 NM blo 4,700' Unmonitored when ATCT clsd.

CALEDONIA CO (See LYNDONVILLE on page 333)

DEERFIELD VALLEY RGNL (See WEST DOVER on page 338)