

**ELLWOOD CITY** N40°49.50' W80°12.69' NOTAM FILE AOO.  
**(VH) (H) VOR/DME** 115.8 EWC Chan 105 257° 8.8 NM to Beaver Co. 1227/8W.  
 VOR unusable:  
 285°-335°  
**RCO** 122.1R 115.8T (ALTOONA RADIO)

**DETROIT**  
**H-10H, L-29C**

**ENOLA** N40°14.78' W76°54.04' NOTAM FILE MDT.  
**NDB (LOMW)** 204 MD 128° 7.1 NM to Harrisburg Intl. 461/11W.

**NEW YORK**

**ERIE**

**ERIE INTL/TOM RIDGE FLD** (ERI)(KERI) 5 SW UTC-5(-4DT) N42°04.99' W80°10.44'

**DETROIT**  
**H-10H, L-30H**  
**IAP, AD**

732 B LRA ARFF Index—See Remarks NOTAM FILE ERI  
**RWY 06-24:** H8420X150 (ASPH-GRVD) S-114, D-161, 2S-124,  
 2D-264 PCN 45 F/C/X/T HIRL  
**RWY 06:** MALSR. PAPI(P4L)—GA 3.0° TCH 54'. RVR-TR Thld dspcd  
 919'. Railroad.  
**RWY 24:** MALSR. PAPI(P4L)—GA 3.0° TCH 55'. RVR-TR Trees.  
**RWY 02-20:** H3508X150 (ASPH) S-50, D-60, 2D-150 MIRL  
**RWY 02:** Thld dspcd 817'. Railroad.  
**RWY 20:** VASI(V4L)—GA 4.0° TCH 69'. Thld dspcd 306'. Road.

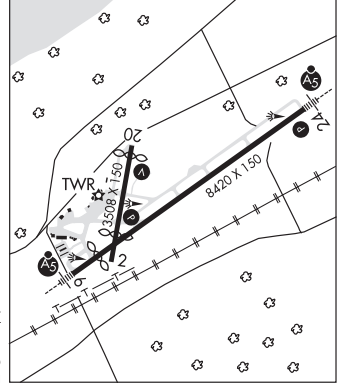
**LAND AND HOLD—SHORT OPERATIONS**

LDG RWY	HOLD—SHORT POINT	AVBL LDG DIST
RWY 24	02-20	6550

**RUNWAY DECLARED DISTANCE INFORMATION**

<b>RWY 02:</b> TORA-3508 TODA-3508 ASDA-3337 LDA-2520
<b>RWY 06:</b> TORA-8420 TODA-8420 ASDA-8420 LDA-7501
<b>RWY 20:</b> TORA-3508 TODA-3508 ASDA-3208 LDA-2902
<b>RWY 24:</b> TORA-8420 TODA-8420 ASDA-7500 LDA-7500

**SERVICE:** S2 FUEL 100LL, JET A QX 3, 4 LGT When twr clsd ACTIVATE  
 MALSR Rwy 06 and Rwy 24, PAPI Rwy 06 and Rwy 24, HIRL Rwy  
 06-24, VASI Rwy 20, MIRL Rwy 02-20 and twy lgts—CTAF. Rwy 06  
 MALSR unmonitored. Rwy 24 MALSR unmonitored. Lgtd supplemental  
 windcone located at north side Rwy 24 1000' west AER.



**AIRPORT REMARKS:** Attended Mon-Fri 1000-0400Z†, Sat-Sun 1000-0300Z†. Birds on and in/ov arpt. Class I, ARFF Index B.  
 Index C avail upon request. Rwy 02-20 clsd to sked acf ops more than 9 pax seats and non sked acf ops more than 30  
 pax seats exc taxi. Extensive non-radio and ultralight acft opr 3.5-5 NM southwest of arpt at or blo 700' AGL May 1-Oct  
 31 annually SR-SS. Ramp usage fee for acft clearing customs. Fee based on acft wgt, ctc aprt for fee sked. Flight  
 Notification Service (ADCUS) available, prior reservation required, phone 814-833-1355.

**AIRPORT MANAGER:** 814-833-4258

**WEATHER DATA SOURCES:** ASOS 120.35 (814) 835-7112.

**COMMUNICATIONS:** CTAF 118.1 ATIS 120.35 UNICOM 122.95

Ⓡ **BUFFALO APP/DEP CON** 121.0 (1100-0500Z‡)

Ⓡ **CLEVELAND CENTER APP/DEP CON** 127.075 (0500-1100Z‡) or ctc Cleveland ARTCC at 440-774-0227.

**TOWER** 118.1 (1100-0500Z‡) **GND CON** 121.9 **CLNC DEL** 126.8

**CLEARANCE DELIVERY PHONE:** For CD ctc Buffalo Apch at 716-626-6920, when Apch clsd ctc Cleveland ARTCC at  
 440-774-0232.

**AIRSPACE:** CLASS D svc 1100-0500Z‡; other times CLASS E.

TRSA svc ctc BUFFALO APP CON within 20 NM

**RADIO AIDS TO NAVIGATION:** NOTAM FILE ERI.

(L) **TACAN** Chan 31 ERI (109.4) N42°01.04' W80°17.56' 059° 6.6 NM to fld. 797/6W.

TACAN AZIMUTH unusable:

076°-109° byd 30 NM blo 5,000'

110°-180° byd 25 NM blo 5,000'

181°-249° byd 30 NM blo 5,000'

250°-274° byd 20 NM

295°-315° byd 35 NM blo 3,000'

DME unusable:

076°-109° byd 30 NM blo 5,000'

110°-180° byd 25 NM blo 5,000'

181°-249° byd 30 NM blo 5,000'

250°-274° byd 20 NM

295°-315° byd 35 NM blo 3,000'

**ILS/DME** 110.3 I-ERI Chan 40 Rwy 06. Class IE. Unmonitored when ATCT closed.

**ILS/DME** 110.3 I-AWY Chan 40 Rwy 24. Class ID.