

**SUSSEX** (FWN)(KFWN) 1 SW UTC-5(-4DT) N41°12.01' W74°37.38'

422 B NOTAM FILE MIV

**RWY 03-21:** H3506X75 (ASPH) MIRL 0.6% up SW

**RWY 03:** REIL. PAPI(P2L)—GA 4.0° TCH 40'. Thld dspcd 466'. Trees.

**RWY 21:** REIL. Thld dspcd 756'. Trees.

**SERVICE:** FUEL 100LL, JET A LGT Dusk-Dawn. ACTVT MIRL Rwy 03-21—CTAF. PAPI and REIL Rwy 03 OTS indef. Rwy 21 REIL OTS indef.

**AIRPORT REMARKS:** Attended 1330-2200Z. Parachute Jumping. Deer and birds on and invof arpt. Fuel self-svc. Drop zone located southwest side of rwy. Main twy southwest 1500' clsd. Non-std twy width, twy and rwy mrks. Aircraft ops on blacktop only. No TGL or PLA allowed. Lndg fee arpt.

**AIRPORT MANAGER:** (973) 702-1640

**WEATHER DATA SOURCES:** ASOS 118.525 (973) 875-0859.

**COMMUNICATIONS:** CTAF/UNICOM 122.7

Ⓡ NEW YORK APP/DEP CON 127.6

**CLEARANCE DELIVERY PHONE:** For CD ctc New York Apch at 800-645-3206.

**RADIO AIDS TO NAVIGATION:** NOTAM FILE MIV.

**SPARTA (H) (H) VORTACW** 115.7 SAX Chan 104 N41°04.05' W74°32.30' 345° 8.8 NM to fld. 1400/11W.

VOR unusable:

075°-085° blo 6,500'

155°-165°

NEW YORK

L-33A, 34H

IAP

**TETERBORO** (TEB)(KTEB) 1 SW UTC-5(-4DT) N40°51.01' W74°03.65'

8 B TPA—See Remarks LRA ARFF Index—See Remarks NOTAM FILE TEB

**RWY 01-19:** H7000X150 (ASPH-GRVD) S-50, D-100

PCN 35 F/C/X/T HIRL CL

**RWY 01:** REIL. PAPI(P4L)—GA 3.1° TCH 56'. Thld dspcd 771'. Tree.

**RWY 19:** TDZL. REIL. PAPI(P4L)—GA 3.0° TCH 57'. Thld dspcd 763'. Bldg.

**RWY 06-24:** H6013X150 (ASPH-GRVD) S-50, D-100

PCN 35 F/C/X/T HIRL CL

**RWY 06:** MALSR. TDZL. REIL. RVR-TR Tree.

**RWY 24:** REIL. PAPI(P4L)—GA 3.2° TCH 46'. RVR-TR Tree.

**LAND AND HOLD-SHORT OPERATIONS**

LDG RWY	HOLD-SHORT POINT	AVBL LDG DIST
RWY 01	06-24	4550
RWY 06	01-19	3750

**RUNWAY DECLARED DISTANCE INFORMATION**

RWY 01:	TORA-7000	TODA-7000	ASDA-6932	LDA-6161
RWY 06:	TORA-6013	TODA-6013	ASDA-6013	LDA-6013
RWY 19:	TORA-7000	TODA-7000	ASDA-7000	LDA-6230
RWY 24:	TORA-6013	TODA-6013	ASDA-6013	LDA-6013

**ARRESTING GEAR/SYSTEM**

RWY 06: EMAS

RWY 19: EMAS

RWY 24: EMAS

**SERVICE:** S4 FUEL 100LL, JET A OX1, 2, 3, 4 LGT Rwy 01-19 dspcd thld centerline lgts OTS indef.

**NOISE:** Aft and helicopter noise abatement rules in effect, ctc noise abatement office 201-393-0399/288-1775 for copy of procedures and rules prior to arrival. Rwy 24 noise critical rwy maximum noise limit of 80 db between 0300-1200Z and 90 db all other hrs. NOTE: See Special Notices—Terminal Area Graphic Notice.

**AIRPORT REMARKS:** Attended continuously. CLOSED to motorless acft, uncontrolled acft and ultralight activity exc by prior permission. Deer and bird activity on and invof arpt. All acft avoid hospital 1.7 miles north of Rwy 01-19. Helicopter ops over residential areas blo 1000' MSL should be avoided. Daily continuous construction activity all quadrants. Stage I acft not permitted to opr at Teterboro Arpt. Acft capable of opr abv 100,000 lbs must submit certification to arpt manager verifying acft opr weight is less than 100,000 lbs. Ctc arpt ops at 201-288-1775 for forms. ARFF Index B equipment coverage provided. TPA-1500 (1492) for large/turbine acft, 1000 (992) for all others. RNAV (GPS) X Rwy 06 is prim RNAV apch to Rwy 06. Ldg fee. Flight Notification Service (ADCUS) available.

**AIRPORT MANAGER:** 201-288-1775

**WEATHER DATA SOURCES:** ASOS (201) 393-0855

**COMMUNICATIONS:** D-ATIS 132.85 114.2 201-288-1690

RCO 122.2 (MILLVILLE RADIO).

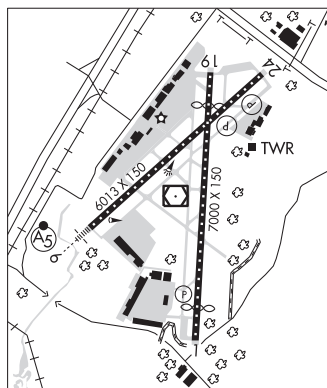
Ⓡ NEW YORK APP CON 127.6 RAMP CTL 120.675

TOWER 119.5 125.1 GND CON 121.9 CLNC DEL 128.05

Ⓡ NEW YORK APP/DEP CON 119.2 126.7

CPDLC (LOGON KUSA)

PDC



NEW YORK

COPTER

H-101, 12J, L-33B, 34H

IAP, AD

CONTINUED ON NEXT PAGE

NE, 21 MAR 2024 to 16 MAY 2024

## CONTINUED FROM PRECEDING PAGE

## AIRSPACE: CLASS D.

RADIO AIDS TO NAVIGATION: NOTAM FILE TEB.

(T) (T) VOR/DME 108.4 TEB Chan 21 N40°50.92' W74°03.73' at fld. 3/11W.

DME unusable:

060°-080° byd 22 NM blo 2,500'

081°-120° blo 4,000'

121°-180° blo 3,000'

236°-246°

VOR unusable:

081°-120° blo 4,000'

121°-180° blo 3,000'

236°-246°

TORBY NDB (LOM) 214 TE N40°48.26' W74°07.95' 062° 4.3 NM to fld. LOM unusable byd 10 NM.

ILS 108.9 I-TEB Rwy 06. Class IE. LOM TORBY NDB. LOM unusable byd 10 NM. LOC unusable byd 14° left of course. Glideslope unusable byd 6° left of course.

ILS/DME 110.15 I-TJL Chan 38(Y) Rwy 19. Class IE.

COMM/NAV/WEATHER REMARKS: For radar svc blo 1800' ctc Teterboro twr frequency 119.5. Arpt ops frequency 130.575.

## TOMS RIVER

OCEAN CO (MJX)(KMJX) 5 SW UTC-5(-4DT) N39°55.56' W74°17.73'

86 B NOTAM FILE MJX

RWY 06-24: H5950X100 (ASPH) S-100, D-176, 2D-581

PCN 45 F/A/X/T HIRL

RWY 06: MALSR. PAPI(P2L)—GA 3.0° TCH 56'.

RWY 24: REIL. PAPI(P2L)—GA 3.0° TCH 55'. Thld dspcd 115'.

RWY 14-32: H3599X75 (ASPH) S-94, D-150 PCN 35 F/A/X/T MIRL

0.3% Up NW

RWY 14: REIL. PAPI(P2L)—GA 3.0° TCH 40'.

RWY 32: REIL. PAPI(P2L)—GA 3.0° TCH 40'.

## RUNWAY DECLARED DISTANCE INFORMATION

RWY 06: TORA-5950 TODA-5950 ASDA-5835 LDA-5835

RWY 24: TORA-5950 TODA-5950 ASDA-5950 LDA-5835

SERVICE: S4 FUEL 100LL, JET A OX3 LGT ACTIVATE MALSR Rwy 06;

REIL Rwy 14, Rwy 32, Rwy 24; PAPI Rwy 06, Rwy 24, Rwy 14 and Rwy 32; HIRL Rwy 06-24; MIRL Rwy 14-32—CTAF.

AIRPORT REMARKS: Attended Apr-Oct 1300-0100Z†, Nov-Mar 1300-2200Z†. Unatndd Christmas and New Years Day. Prearrange for svcs aft hrs call 732-797-1077. Deer on and invof arpt.

AIRPORT MANAGER: (732) 929-2054

WEATHER DATA SOURCES: AWOS-3PT 119.875 (732) 797-2542.

COMMUNICATIONS: CTAF/UNICOM 122.7

® MC GUIRE APP/DEP CON 126.475

CLEARANCE DELIVERY PHONE: For CD ctc Mc Guire Apch at 609-754-2767.

RADIO AIDS TO NAVIGATION: NOTAM FILE MIV.

COYLE (H) (H) VORTACW 113.4 CYN Chan 81 N39°49.04' W74°25.90' 054° 9.1 NM to fld. 203/10W.

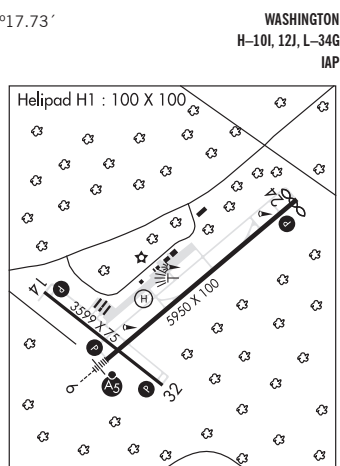
VOR unusable:

044°-054° blo 3,800'

ILS 109.9 I-MJX Rwy 06. Class IA. Unmonitored.

HELIPAD H1: H100X100 (ASPH)

HELIPORT REMARKS: Helipad H1 perimeter lights. ACTIVATE perimeter lgts—CTAF.

WASHINGTON  
H-101, 121, L-34G  
IAP

TORBY N40°48.27' W74°07.95' NOTAM FILE TEB.

NDB (LOMW) 214 TE 062° 4.3 NM to Teterboro. 16/12W.

NDB unusable:

Byd 10 NM

NEW YORK