

## MANVILLE

CENTRAL JERSEY RGNL (47N) 1 S UTC-5(-4DT) N40°31.47' W74°35.90'

86 B NOTAM FILE MIV

RWY 07-25: H3507X50 (ASPH) S-30 LIRL 0.6% up SW

RWY 07: PAPI(P2L)—GA 3.4° TCH 36'. Thld dspcd 580'. Railroad.

RWY 25: PAPI(P2L)—GA 3.3° TCH 40'. Thld dspcd 262'. Trees.

SERVICE: S4 FUEL 100LL

AIRPORT REMARKS: Attended 1300Z±—dusk except for Christmas and New Year. Deer and birds on and invof arpt. Banner tow ops SW Rwy 07.

AIRPORT MANAGER: 908-526-2822

COMMUNICATIONS: CTAF/UNICOM 122.7

Ⓡ NEW YORK APP/DEP CON 132.8

CLEARANCE DELIVERY PHONE: For CD ctc New York Apch at 800-645-3206.

RADIO AIDS TO NAVIGATION: NOTAM FILE IPT.

YARDLEY (L) (V) VOR/DME 108.2 ARD Chan 19 N40°15.20' W74°54.46' 051° 21.6 NM to fld. 294/10W.

VOR unusable:

020°-040°

195°-225° byd 25 NM blo 5,000'

250°-265° blo 3,500'

266°-280° byd 20 NM blo 5,000'

281°-300° byd 14 NM blo 6,000'

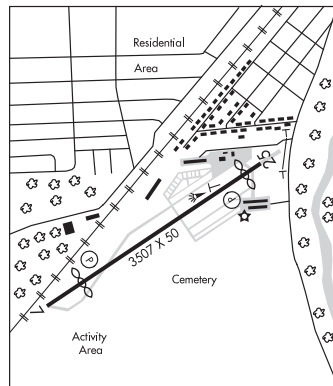
DME unusable:

225°-275° byd 25 NM blo 5,000'

NEW YORK

L-33A, 34H

IAP



MC GUIRE FLD (JOINT BASE MC GUIRE DIX LAKEHURST) (WRI)(KWRI) AF (A ANG) 2 SE

UTC-5(-4DT) N40°00.94' W74°35.50'

141 B TPA—See Remarks LRA NOTAM FILE WRI Not insp.

RWY 06-24: H10014X150 (ASPH-CONC-GRVD) PCN 40 F/A/W/T HIRL CL

RWY 06: ALSF2. TDZL. PAPI(P4L)—GA 3.0° TCH 76'. RVR-TMR

RWY 24: ALSF1. PAPI(P4L)—GA 3.0° TCH 76'. RVR-TR Rgt tfc.

RWY 18-36: H7126X150 (CONC) PCN 45 F/A/W/T HIRL

RWY 18: REIL. PAPI(P4L)—GA 3.0° TCH 68'. RVR-TR Rgt tfc.

RWY 36: REIL. PAPI(P4L)—GA 3.0° TCH 46'. RVR-TR

SERVICE: S4 OX 1, 2 MILITARY—JASU (C-26) (MD-3) 6(MA-1A) 1(MA-1) FUEL A++ FLUID SP PRESAIR LHOX LOX (C-5, KC-10, 747 de-icing ltd to wg only. 3 hr PN rqr). OIL O-128-133-148-156 TRAN ALERT Svc avbl H24 dly.

MILITARY REMARKS: CAUTION Rwy 18-36 only has 200 ft paved asphalt non-grooved overruns, remainder of rwy not grooved. NSTD mrk on victor row for alert MSN, X-RAY Row (PRIM), and Romeo Row (ALTN) for combat off load ops. Extv non-ctl VFR acft within 20 NM of arpt. Rwy 18-36 spot ldg zone markings mid-fld. Use extreme caution for extv UAS ops invof R-5001. ASA ramp opr 1230-2130Z± wkd. Wkend hr by prior apvl. Fac lctd on SW side of afld. 72 hr PPR for Army ramp and ldg all lctn on Ft Dix reservation DSN 562-3451, cell 609-649-3743. Tran acft ctc Army Ops prior to ldg.

TFC PAT TPA for copter 600(459), Lgt acft 800(659), Rectangular 1600(1459), Overhead 2100(1959). Rgt tfc Rwy 24 and Rwy 18. MISC All classified material must be stored at the JB Comd Post DSN 650-3935/3936. Afld mgmt has no classified storage capabilities. Rwy condition codes (RWYCC) unavailable. All tran acft rqr PPR. Req apvl thru afld mgmt ops DSN 650-2714, C609-754-2714; PPRs will be req no earlier than seven days, and no later than 24 hr prior to arr, 48 hr for acft carrying dangerous/haz cargo. Aircrews with apv PPR that deviate from coord arr time by more than one hr must notify AMOPS ASAP. If no notification rcvd after one hr, PPR will be terminated. Normal BASH Phase II period from 1 Nov-31 Mar; OT by NOTAM. Ctc Afld Mgmt OPS for current Bird Watch cond. AN/FMQ 19 automated observing sys in use, augmented by human obs when nec durg airfield hrs. Vis of airfield rstr fr base wx ops NW SE durg man augmentation by wx forecaster. Wx svc avbl H24. Wx fit DSN 650 1130, C609 754 1130. When wx svc clsd, tran crews ctc 15 OPR Wx sqdn (OWS) at SCOTT AFB H24 DSN 576 9755/9702, C618 256 9755/9702. Durg evac of wx fit ctc 15OWS at nr abv. Ron tran crew rqr wx brief prior to ldg ATC will suppl obs as needed. RSTD All inbd PAX/cargo acft ctc Comd Post no later than 30 min prior to ldg. Dur BASH Phase II, one-time dep/arr auth 'd +/- 1 hr SR/SS under real-time BWC. Real-time BWC can only be determined when the fld cond are at least 3000 ft/5 statute miles and if twr can visually confirm a BWC less than SEVERE. Tkooff and ldg are not authorized unless apv by 305 OG/CC for 305 AMW, and USAF tran acft or Ops Gp Comdr svc equivalent for tenant units. Alfa alert acft are exempt from this requirement. Coord waivers thru Comd Post. Tran acft rqr cust must coord with airfield mgmt at time of PPR req. RWY First 431' Rwy 36 conc remaining 6695' asph. Rwy 06-24 under runs avbl for dep. 180 deg turns rstd to conc portions of rwy only. First 1000' of Rwy 06 and Rwy 24 are grvd conc, remainder of rwy grvd asph. Rwy 06-24 has hardened and non-grvd ovruns.

NEW YORK

H-101, 121, L-34G

DIAP, AD

CONTINUED ON NEXT PAGE

## CONTINUED FROM PRECEDING PAGE

**AIRPORT MANAGER:** 609-754-6466

**COMMUNICATIONS:** SFA PTD 372.2 D-ATIS 110.6 270.1 DSN 650-2847

Ⓡ **APP/DEP CON** 126.475 363.8 (Arr sector for IFR radar pattern when open is 120.25/290.9)

**TOWER** 118.65 255.6 257.8 **GND CON** 121.8 275.8 **CLNC DEL** 135.2 335.8

**COMD POST** 134.1 237.15 (Use 237.15 within 75 NM of arpt. If 237.15 is inop, use 134.1 (call Brickyard))

**108 ANG COMD POST** 251.2 321.0 (call Torch Ctl) DSN 650-2127 **PMSV METRO** 239.8 AN/FMQ-19 Automated Observing

Sys in use, augmented by human obsn when nec dur afld hr. Vis of afld rstd fr base wx ops NW-SE dur manual

augmentation by wx fcstr. Wx svc avbl H24. Wx fit DSN 650-3992/3568, C609-754-3992/3568. When wx svc clsd,

tran crews ctc 15 Opr Wx Squadron (OWS) at Scott AFB H24 DSN 576-9755/9720, C618-256-9755/9720. Dur evac

of wx fit ctc 15 OWS at nr abv. RON tran crew req wx brief prior to ldg. ATC will supplement obsn as needed. **ARMY OPS** 36.3

**FT DIG RNX** 34.0 41.0 **RANGE CTL** 34.3

**AIRSPACE: CLASS D.**

**RADIO AIDS TO NAVIGATION:** NOTAM FILE WRI.

(L) (L) **VORTACW** 110.6 GXU Chan 43 N40°00.57' W74°35.79' at fld. 119/12W.

VOR unusable:

165°-265° byd 15 NM

165°-265° byd 8 NM blo 2,000'

266°-269°

270°-285° byd 15 NM

286°-330° byd 35 NM blo 3,000'

355°-060° byd 20 NM

TACAN AZIMUTH unusable:

165°-285° byd 12 NM blo 2,000'

165°-285° byd 15 NM

355°-060° byd 20 NM

VOR & TACAN No NOTAM MP 1100-1300Z‡ Mon and thr

DME unusable:

165°-285° byd 12 NM blo 2,000'

165°-285° byd 15 NM

355°-060° byd 20 NM

**ILS** 110.1 I-WRI Rwy 06. Class IID. PAR - apch dly fr 1100-0300Z‡ contingent upon PAR controller avbl and/or deployed status of mobile PAR. 108 ANG Comd Post - 303.0 remarks: (call Torch Control) DSN 650-2127.

ILS/Radar-Radar: between 0300-1100Z‡, PAR avbl for full stop ldg only when wx is blw TACAN min. No NOTAM MP: 1100-1300Z‡ Tue, Wed, Fri.

**ILS** 110.1 I-JTQ Rwy 24. Class ID. No NOTAM MP: 1100-1300Z‡ Tue, Wed, Fri. Autopilot cpd apchs NA blw 580' MSL.

**COMM/NAV/WEATHER REMARKS:** See Terminal FLIP for Radar minima. Radar No NOTAM MP Mon-Thur 0930-1130Z‡, Fri 0730-1130Z‡, Sat 1100-1500Z‡.

**MILLVILLE MUNI** (MIV)(KMIV) 3 SW UTC-5(-4DT) N39°22.07' W75°04.33'

85 B NOTAM FILE MIV

**RWY 10-28:** H6003X150 (ASPH-GRVD) S-120, D-179, 2S-83,

2D-263 PCN 55 F/D/W/T MIRL

**RWY 10:** MALSR. PAPI(P4L)—GA 3.0° TCH 53'. Trees.

**RWY 28:** PAPI(P4L)—GA 3.0° TCH 29'.

**RWY 14-32:** H5058X150 (CONC) S-40, D-65, 2S-83, 2D-125 MIRL

**RWY 14:** PAPI(P4L)—GA 3.0° TCH 48'. Trees.

**RWY 32:** PAPI(P4L)—GA 3.0° TCH 39'. Trees.

**SERVICE:** S8 FUEL 100LL, JET A LGT ACTIVATE MALSR Rwy 10; MIRL

Rwy 10-28 and Rwy 14-32—CTAF.

**AIRPORT REMARKS:** Attended 1300-2300Z‡. Birds on and invof arpt. PAEW

within all rwy and twy safety areas daily May-Oct. All ultralight acct,

glider ops and formation flts PPR. Call (856) 825-1244 Mon-Fri

1300-2100Z‡. Self-svc fuel avbl 24 hrs with credit card. Main apron

clsd to tran acct north of Twy K. Twy G not to be used by acct with

wingspan grt than 48' north of Twy A. Fence line 44' north of Twy G

cntrln, north of Twy A. Rwy 10 calm wind rwy.

**AIRPORT MANAGER:** 856-825-1244

**WEATHER DATA SOURCES:** ASOS 119.6 (856) 327-3455.

**COMMUNICATIONS:** CTAF/UNICOM 123.0

RCO 122.2 (MILLVILLE RADIO)

Ⓡ **ATLANTIC CITY APP/DEP CON** 124.6

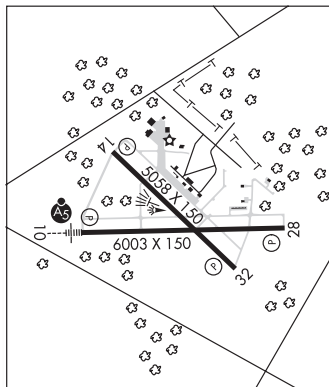
**CLEARANCE DELIVERY PHONE:** For CD if una to ctc on FSS freq, ctc Atlantic City Approach at 609-485-6193.

**AIRSPACE: CLASS E.**

**WASHINGTON**

H-101, 12J, L-34G, A

IAP



CONTINUED ON NEXT PAGE