

**TURNERS FALLS** (See MONTAGUE on page 132)

**VINEYARD HAVEN**

**MARTHA'S VINEYARD** (MVY)(KMOVY) 3 S UTC-5(-4DT) N41°23.61' W70°36.83'

**NEW YORK**  
H-101, 12K, L-33D  
IAP, AD

67 B ARFF Index—See Remarks NOTAM FILE MVY  
**RWY 06-24:** H5504X100 (ASPH-GRVD) S-65, D-108, 2S-137, 2D-185 PCN 29 F/A/X/T HIRL  
**RWY 06:** REIL. PAPI(P4R)—GA 3.0° TCH 53'. RVR-R Trees.  
**RWY 24:** MALSR. PAPI(P4R)—GA 3.0° TCH 52'. RVR-T Rgt tfc.  
**RWY 15-33:** H3327X75 (ASPH) S-31, D-45, 2D-61 PCN 16 F/A/X/T MIRL 0.3% up NW  
**RWY 15:** Trees.  
**RWY 33:** REIL. Trees. Rgt tfc.

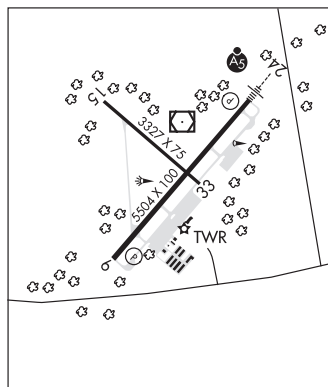
**RUNWAY DECLARED DISTANCE INFORMATION**

**RWY 06:** TORA-5504 TODA-5504 ASDA-5504 LDA-5504  
**RWY 15:** TORA-3327 TODA-3327 ASDA-3327 LDA-3327  
**RWY 24:** TORA-5504 TODA-5504 ASDA-5504 LDA-5504  
**RWY 33:** TORA-3327 TODA-3327 ASDA-3327 LDA-3327

**SERVICE:** S2 **FUEL** 100LL, JET A **LGT** When ATCT clsd ACTVT MALSR  
**Rwy 24;** REIL Rwy 33; HIRL Rwy 06-24; MIRL Rwy 15-33—CTAF.

**NOISE:** Arpt has noise abatement procs. Ctc opns 508-693-7022. Avoid residential areas SW of arpt.

**AIRPORT REMARKS:** Attended continuously. Class I, ARFF Index B. 24 hr PPR for unskd acr ops with more than 9 pax seats call amgr 508-693-7022. Rwy 15-33 not avbl for skedd acr ops more than 9 pax seats or unskd acr ops at least 31 pax seats. Twy D fm Rwy 06 to Rwy 15 clsd to acft with ovr 9 pax. Hcls prohibited fm hover taxi, ldg and tkof fm t-hngrs. Parking fee all acft. Ldg fee all acft over 4000 lbs.



**AIRPORT MANAGER:** 508-693-7022

**WEATHER DATA SOURCES:** ASOS 126.25 (508) 696-6988.

**COMMUNICATIONS:** CTAF 121.4 ATIS 126.25 (508) 693-7685 UNICOM 122.95

Ⓡ **BOSTON APP/DEP CON** 133.75 (1000-0500Z‡)

CLNC DEL 119.7 (When twr clsd)

Ⓡ **BOSTON CENTER APP/DEP CON** 128.75 (0500-1000Z‡).

**VINEYARD TOWER** 121.4 (May 15-Oct 31 1100-0300Z‡, Nov 1-May 14 1200-2200Z‡)

**GND CON** 124.35 **CLNC DEL** 124.35

**AIRSPACE:** CLASS D svc May 15- Oct 31 1100-0300Z‡, Nov 1- May 14 1200-2200Z‡; other times CLASS G.

**RADIO AIDS TO NAVIGATION:** NOTAM FILE MVY.

**MARTHAS VINEYARD (L) (L) VORW/DME** 114.5 MVY Chan 92 N41°23.77' W70°36.76' at fld. 62/15W.

**ILS/DME** 108.7 I-MVY Chan 24 Rwy 24. Class IE. Unmonitored when ATCT clsd. Autopilot cpd apchs NA blw 300' MSL.

**WALTER J KOLADZA** (See GREAT BARRINGTON on page 127)

**WESTFIELD-BARNES RGNL** (See WESTFIELD/SPRINGFIELD on page 142)