

**NEW BEDFORD RGNL** (EWB)(KEWB) 2 NW UTC-5(-4DT) N41°40.59' W70°57.47'

NEW YORK

79 B LRA Class IV, ARFF Index A NOTAM FILE EWB

H-10J, 11D, 12K, L-33D

**RWY 05-23:** H5400X150 (ASPH-GRVD) S-30, D-108, 2S-137,  
2D-195 HIRL 0.3% up NE

**RWY 05:** MALSR. RVR-T Tree.

**RWY 23:** MALSR. PAPI(P4L)—GA 3.0° TCH 46'. RVR-R Thld dsplcd  
400'. Tree.

**RWY 14-32:** H5002X75 (ASPH) S-33, D-48, 2D-95 MIRL

**RWY 14:** PAPI(P4L)—GA 3.42° TCH 50'. Tree.

**RWY 32:** REIL. PAPI(P4L)—GA 3.5° TCH 50'. Trees.

**SERVICE:** S4 FUEL 100LL, JET A OX 3, 4 LGT When twr clsd  
ACTIVATE MALSR Rwy 05 and Rwy 23, REIL Rwy 32, HIRL Rwy  
05-23, MIRL Rwy 14-32—CTAF. PAPI Rwy 14, Rwy 23 and Rwy 32  
ops 24 hrs.

**AIRPORT REMARKS:** Attended 1100-0400Z†. Birds and wildlife on and in/ov  
arpt. Ldg fees for acft over 5,500 lbs. Arpt clsd to non sked acr acft  
with more than 31 pax exc 48 hr PPR 508-991-6161. Twys A1 and  
A2 for air carrier acft only. Ldg fees for acft over 5500 lbs. Flight  
Notification Service (ADCUS) available.

**AIRPORT MANAGER:** 508-991-6161

**WEATHER DATA SOURCES:** ASOS 126.85 (508) 992-0195. LAWRS.

**COMMUNICATIONS:** CTAF 118.1 ATIS 126.85 (508) 994-6277 UNICOM  
122.95

Ⓡ PROVIDENCE APP/DEP CON 128.7 (Sun-Fri 1030-0530Z†, Sat 1030-0500Z†) other times ctc

BOSTON CENTER APP/DEP CON 124.85

TOWER 118.1 (1130-0300Z†) GND CON 121.9

**CLEARANCE DELIVERY PHONE:** For CD when Apch clsd ctc Boston ARTCC at 603-879-6859.

**AIRSPACE:** CLASS D svc 1130-0300Z†; other times CLASS G.

**RADIO AIDS TO NAVIGATION:** NOTAM FILE PVD.

**PROVIDENCE (H) (H) VORW/DME** 115.6 PVD Chan 103 N41°43.46' W71°25.78' 112° 21.4 NM to fld. 49/14W.

VOR portion unusable:

085°-105° byd 12 NM blo 5,500'

085°-105° byd 8 NM blo 3,000'

106°-294° byd 30 blo 3,000'

295°-330° byd 30 blo 6,000'

331°-084° byd 30 blo 3,000'

DME portion unusable:

085°-105° byd 12 NM blo 5,500'

085°-105° byd 8 NM blo 3,000'

106°-152° byd 11 NM blo 2,000'

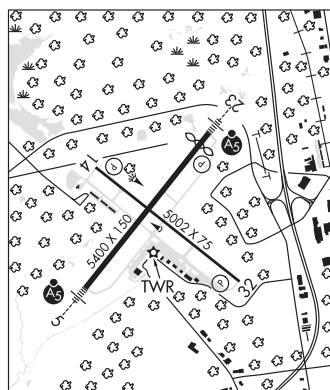
106°-152° byd 20 NM blo 4,000'

153°-294° byd 30 NM blo 3,000'

295°-330° byd 30 blo 6,000'

331°-084° byd 30 blo 3,000'

**ILS/DME** 109.7 I-EWB Chan 34 Rwy 05. Unmonitored when ATCT clsd. Autopilot cpd apch blw 470' na. Localizer  
backcourse unusable 15° left and r of course; byd 12 NM. Backcourse DME unusable 15° left and r of course; byd 12  
NM.

**NEWBURYPORT**

**PLUM ISLAND** (2B2) 1 SE UTC-5(-4DT) N42°47.72' W70°50.37'

NEW YORK

11 NOTAM FILE BDR

**RWY 14-32:** 2300X100 (TURF)

**RWY 14:** Trees.

**RWY 32:** Trees.

**RWY 10-28:** H2105X50 (ASPH) S-8

**RWY 10:** Trees.

**RWY 28:** Thld dsplcd 300'. Fence.

**SERVICE:** S4 FUEL 100LL

**AIRPORT REMARKS:** Attended Apr-Sep 1300-2300Z†. Attended irregularly Oct-Mar. Wildlife in/ov arpt. No touch and go  
allowed.

**AIRPORT MANAGER:** 978-463-4222

**COMMUNICATIONS:** CTAF/UNICOM 123.0

Ⓡ BOSTON APP/DEP CON 124.4

**CLEARANCE DELIVERY PHONE:** For CD ctc Boston Apch at 603-594-5552.