

**SHELBYVILLE****SHELBY CO** (6K2) 1 NW UTC-6(-5DT) N39°48.75' W92°03.01'**KANSAS CITY**

760 NOTAM FILE COU

**RWY 17-35:** 2300X46 (TURF) 1.3% up N**RWY 17:** Fence.**RWY 35:** Tree.

**AIRPORT REMARKS:** Unattended. Heavy concentration of lrg waterfowl on and invof arpt. NSTD rwy safety area beyond each rwy end; Rwy 17 has fence 80 ft fm thr; Rwy 35 has large drop off and lake. Rwy 17 farm equipment 6-8 ft tall 145 ft from rwy end. Rwy 17-35 mkd with large yellow cones. Rwy 35 mkd with nrs at thr.

**AIRPORT MANAGER:** 573-633-2520**COMMUNICATIONS:** CTAF 122.9**CLEARANCE DELIVERY PHONE:** For CD ctc Kansas City ARTCC at 913-254-8508.**SIKESTON MEML MUNI** (SIK)(KSIK) 2 NE UTC-6(-5DT) N36°53.93' W89°33.71'**ST LOUIS**

315 B NOTAM FILE STL

**H-61, L-16H****RWY 03-21:** H5502X100 (ASPH) S-76, D-96, 2D-152**IAP**

PCR 310 F/D/X/T MIRL

**RWY 03:** PAPI(P4L)—GA 3.0° TCH 45'. Tree.**RWY 21:** REIL. PAPI(P4L)—GA 3.0° TCH 45'. Trees.

**SERVICE:** FUEL 100LL, JET A LGT MIRL Rwy 03-21 preset on low ints, to increase ints and ACTIVATE REIL Rwy 21—CTAF. PAPI Rwy 03 and Rwy 21 opr continuously.

**AIRPORT REMARKS:** Attended 1400-2300Z†, 24-hr automatic credit card fueling system for 100LL. Ultralight activity on and invof arpt.

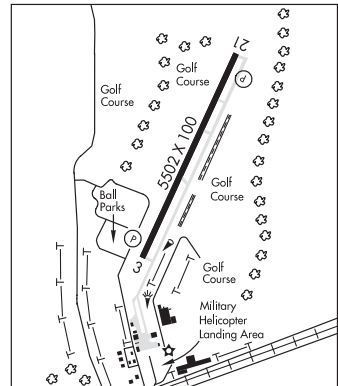
Numerous birds invof arpt. Rwy 03-21 markings severely faded.

**AIRPORT MANAGER:** 573-471-2037**WEATHER DATA SOURCES:** AWOS-3 119.175 (573) 471-7371.**COMMUNICATIONS:** CTAF/UNICOM 122.8® **MEMPHIS CENTER APP/DEP CON** 133.65

**CLEARANCE DELIVERY PHONE:** For CD ctc Memphis ARTCC at 901-368-8453/8449.

**RADIO AIDS TO NAVIGATION:** NOTAM FILE CGI.**CAPE GIRARDEAU (L) DME** 112.9 CGI Chan 76 N37°13.65'

W89°34.34' 179° 19.7 NM to fld. 335.

**SKYHAVEN** (See WARRENSBURG on page 284)