

ST LOUIS

CREVE COEUR (1H0) 4 NW UTC-6(-5DT) N38°43.64' W90°30.51'

462 B TPA—See Remarks NOTAM FILE STL

RWY 16-34: H4500X75 (CONC) S-30 MIRL

RWY 16: REIL. PAPI(P4L)—GA 3.0° TCH 40'. Rgt tfc.

RWY 34: REIL. PAPI(P4L)—GA 3.0° TCH 43'.

RWY 07-25: 3079X220 (TURF)

RWY 25: Rgt tfc.

SERVICE: S3 **FUEL** 100LL, JET A **LGT** SS-SR REIL Rwy 16 and 34; MIRL Rwy 16-34 preset low instnt; incr instnt—CTAF. ACTVT REIL Rwy 16 and 34—CTAF.

AIRPORT REMARKS: Attended 1400Z±-dusk. Deer on and in/ov arpt. Heli ops on and in/ov arpt; wkend antique acft ops on and in/ov arpt. Hover taxi trng parl Rwy 07-25. Be alert to increased antique acft ops on and in/ov arpt on weekends. Rwy 16-34 12,500 lb max GWT or less; PPR more than 12,500 lb—amgr. Ultralight and TGL ops NA. Twy and apron strength—amgr. TPA—1112(650) and 1462(1000) for acft over 12,500 pounds. Rwy 07 marked with yellow cones. Rwy 25 marked with yellow cones. Rwy 16 markings faded. Rwy 34 markings faded.

AIRPORT MANAGER: 314-878-9575

COMMUNICATIONS: CTAF/UNICOM 122.8

® **SAINT LOUIS APP/DEP CON** 126.5

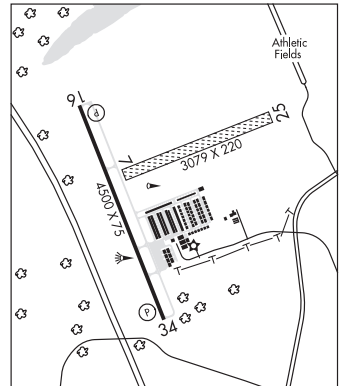
CLEARANCE DELIVERY PHONE: For CD ctc St Louis Apch at 314-890-1017.

RADIO AIDS TO NAVIGATION: NOTAM FILE STL.

FORISTELL (L) (L) VORTACW 110.8 FTZ Chan 45 N38°41.66' W90°58.28' 080° 21.8 NM to fld. 819/5E.

TACAN AZIMUTH unusable:

265°-285° byd 35 NM blo 2,500'



ST LOUIS
L-27B, A
IAP

SPIRIT OF ST LOUIS (SUS)(KSUS) 17 W UTC-6(-5DT) N38°39.73' W90°39.12'

463 B TPA—See Remarks LRA Class IV, ARFF Index A NOTAM FILE SUS MON Airport

RWY 08R-26L: H7486X150 (CONC-GRVD) S-33, D-100, 25-127

PCR 310 R/C/W/T HIRL CL

RWY 08R: MALSR. VASI(V2R)—GA 3.0° TCH 55'. RVR-T Rgt tfc.

RWY 26L: MALSR. VASI(V2L)—GA 3.0° TCH 55'. RVR-T Thld dspcd 481'.

RWY 08L-26R: H5000X75 (ASPH-RFSC) 2D-45.5 PCR 100 F/D/X/T MIRL

RWY 08L: PAPI(P4L)—GA 3.0° TCH 33'.

RWY 26R: VASI(V2L)—GA 3.5° TCH 48'. Pole. Rgt tfc.

RUNWAY DECLARED DISTANCE INFORMATION

RWY 08L:TORA-5000 TODA-5000 ASDA-5000 LDA-5000

RWY 08R:TORA-7486 TODA-7486 ASDA-7225 LDA-7225

RWY 26L:TORA-7486 TODA-7486 ASDA-7486 LDA-7005

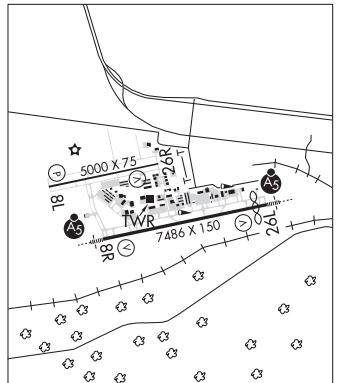
RWY 26R:TORA-5000 TODA-5000 ASDA-5000 LDA-5000

SERVICE: S4 **FUEL** 100LL, JET A **OX** 2, 4 **LGT** HIRL Rwy 08R-26L preset on med ints 0500-1200Z±; MIRL Rwy 08L-26R preset on low ints 0500-1200Z± to increase ints after 0500Z± and ACTIVATE MALSR Rwy 08R and Rwy 26L—CTAF.

NOISE: Noise sensitive areas to the south of arpt. Noise Abatement

Procedures: For Dep stage III acft use 08L-26R 0500-1200Z±. Noise Abatement Procedure in effect: For Dep stage II acft use Rwy 08L/26R 0400-1300Z± excp PPR 636-532-2222 Mon-Fri 1400-2300Z±; other times call 314-568-0581/0584, 636-536-2877, or 636-441-9231.

AIRPORT REMARKS: Attended continuously. Arpt clsd to acft over 100,000 lbs, except acft 100,000-150,000 lbs for PPR 24 hrs call arpt manager 314-532-1858. Rwy 08R-26L CLOSED to touch and go landing. 24hr PPR required for all Military Aircraft contact 636-532-2222. Numerous and intense helicopter ops on arpt. Be Alert: Rwy 08L-26R and parallel and connecting twy CLOSED to Part 121 acf ops. Rwy 8L-26R not avbl for scheduled acf ops with more than 9 psgr seats or unscheduled acf at least 31 psgr seats. Intersection C CLOSED indef between Twy E and Rwy 08L-26R. Taxilane B btn South Entrance and West Ramp and Twy Z CLSD. PPR 24 hrs for air carrier ops with more than 30 passenger seats, call arpt manager 314-568-0584. Air carrier ops over 9 passenger seats not authorized in excess of 15 min before or after scheduled arrival/departure times except prior coordination with arpt manager for ARFF 314-568-0584. Twy B between SE and NW entrance to West Ramp, Twy B NW Twy A from the distance of 200' to 700' and Twy Z not visible by twr. Bright driving range lights 2.7 NM east of Rwy 26L. All maintenance hi-power engine run-ups use ground run-up enclosure on Twy D. TPA—Rwy 08R-26L prop acft 1700 (1237); Rwy 08L-26R prop acft 1300 (837). TPA—jets 2000 (1537). Flight Notification Service (ADCUS) avbl Mon-Fri 2300-1430Z±, Sat and Sun 24 hrs.



ST LOUIS
H-5D, L-27B, A
IAP, AD

CONTINUED ON NEXT PAGE

NC, 27 NOV 2025 to 22 JAN 2026

CONTINUED FROM PRECEDING PAGE

AIRPORT MANAGER: 636-532-2222

WEATHER DATA SOURCES: ASOS 134.8 (314) 890-7255. LAWRS 1200-0500Z†.

COMMUNICATIONS: CTAF 124.75 ATIS 134.8 636-532-3213 **UNICOM** 122.95

RCO 122.2

® **SAINT LOUIS APP/DEP CON** 126.5

TOWER 124.75 (1200-0500Z†) **GND CON** 121.7 **CLNC DEL** 133.1 **CLNC DEL** 121.7 (when twr clsd)

AIRSPACE: CLASS D svc 1200-0500Z†; other times CLASS E.

RADIO AIDS TO NAVIGATION: NOTAM FILE STL.

FORISTELL (L) (L) VORTACW 110.8 FTZ Chan 45 N38°41.66' W90°58.28' 092° 15.1 NM to fld. 819/5E.

TACAN AZIMUTH unusable:

265°-285° byd 35 NM blo 2,500'

EAVES NDB (LOMW) 227 FZ N38°40.64' W90°32.84' 261° 5.0 NM to fld. 459/1W. NOTAM FILE SUS.

SNOOP NDB (LOMW) 326 SU N38°38.35' W90°46.01' 077° 5.6 NM to fld. 468/1W. NOTAM FILE SUS.

ILS 110.55 I-SUS Rwy 08R. Class IA. LOM SNOOP NDB. LOM unmonitored.

ILS 111.1 I-FZU Rwy 26L. Class IB. LOM EAVES NDB. LOM unmonitored. LOC unusable byd 30° right of course.

ST LOUIS DOWNTOWN HELIPORT (MO7) 0 N UTC-6(-5DT) N38°37.51' W90°10.95'

ST LOUIS

375 NOTAM FILE STL

HELIPAD H1: 37X37 (MATS)

HELIPORT REMARKS: Attended 1500-0100Z†. Svc aft hrs avbl for fee; contact heliport mgr 618-514-0206. Daylight operations only, night operations not recommended. Call heliport mgr before arr for Indg availability due to hvy concentration of air taxi opns. 618-514-0206. Landing from the south and east are recommended. River barge platform measures approximately 175' by 54'.

AIRPORT MANAGER: 314-923-3014

COMMUNICATIONS: **UNICOM** 122.8

CLEARANCE DELIVERY PHONE: For CD etc St Louis Apch at 314-890-1017.