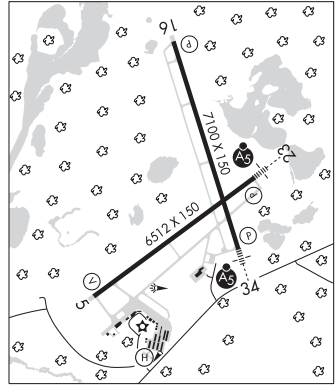


**BRainerd Lakes RGNL** (BRD)(KBRD) 3 NE UTC-6(-5DT) N46°24.25' W94°08.03'  
 1232 B Class I, ARFF Index A NOTAM FILE BRD  
**RWY 16-34:** H7100X150 (CONC-GRVD) S-75, D-125, 2D-220  
 PCN 49 R/B/W/U HIRL

**TWIN CITIES**  
 H-21, L-14H  
 IAP, AD

**RWY 16:** REIL. PAPI(P4L)—GA 3.0° TCH 45'.  
**RWY 34:** MALSR. PAPI(P4R)—GA 3.0° TCH 46'. Trees.  
**RWY 05-23:** H6512X150 (CONC-GRVD) S-75, D-125, 2D-220  
 PCN 49 R/B/W/U HIRL  
**RWY 05:** REIL. VASI(V4L)—GA 3.0° TCH 45'. Tree.  
**RWY 23:** MALSR. PAPI(P4L)—GA 3.0° TCH 50'. Trees.  
**SERVICE:** S4 FUEL 100LL, JET A OX1, 3 LGT HIRL Rwy 05-23 and Rwy 16-34 preset on low ints, to increase ints and ACTIVATE REIL Rwy 05 and Rwy 16, and MALSR Rwy 23 and Rwy 34—CTAF. Rwy 23 PAPI unusable byd 9° right of course.



**AIRPORT REMARKS:** Attended Jul-Oct 1100-0500Z†, Nov-Jun 1300-0500Z†. For attendance other hours, see current phone listing in pilots lounge, 218-829-3398. Deer and gulls on and invof arpt. PPR for unscheduled air carrier ops with more than 30 passenger seats call arpt manager 218-825-2166 between 1400-2300Z†. Air carrier ops involving acft with more than 30 passengers are not authorized in excess of 15 minutes before or after scheduled arrival/departure times without prior coordination with arpt manager and confirmation that ARFF is avbl prior to ldg or tkf.

**AIRPORT MANAGER:** 218-825-2166  
**WEATHER DATA SOURCES:** ASOS 126.775 (218) 828-3314.  
**COMMUNICATIONS:** CTAF/UNICOM 122.7  
 RCO 122.2 (PRINCETON RADIO)

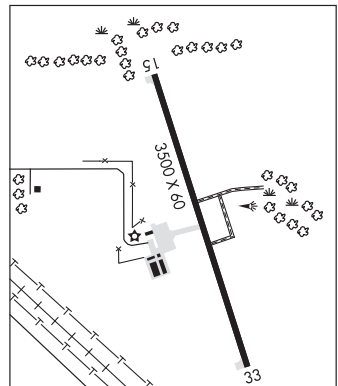
Ⓜ **MINNEAPOLIS CENTER APP/DEP CON 118.05**  
**CLEARANCE DELIVERY PHONE:** For CD if una to ctc on FSS freq, ctc Minneapolis ARTCC at 651-463-5588.  
**AIRSPACE:** CLASS E svc 1100-0500Z† Mon-Sat, 1200-0500Z† Sun; other times CLASS G.

**RADIO AIDS TO NAVIGATION:** NOTAM FILE PKD.  
**PARK RAPIDS (L) DME** 110.6 PKD Chan 43 N46°53.89' W95°04.26' 127° 48.8 NM to fld. 1472.  
**LAREW NDB (MHW/LOM)** 251 BR N46°27.40' W94°01.35' 233° 5.6 NM to fld. 1260/3E. NOTAM FILE BRD.  
**ILS** 109.9 I-BRD Rwy 23. Class IE. LOM LAREW NDB. COMLO unmonitored. Unmonitored.  
**ILS/DME** 109.7 I-LER Chan 34 Rwy 34. Class IB. Unmonitored.

• • • • •  
**HELIPAD H1:** H60X60 (CONC-GRVD) PERIMETER LGTS  
**HELIPORT REMARKS:** Helipad H1 has perimeter lgts. Rwy H1 perimeter lgts operate SS-SR.

**BRooten Muni/John O Bohmer FLD** (6D1) 1 SE UTC-6(-5DT) N45°29.85' W95°06.16' **TWIN CITIES**  
 1304 B NOTAM FILE PNM **L-14H**

**RWY 15-33:** H3500X60 (ASPH) MIRL  
**SERVICE:** FUEL 100LL LGT ACTIVATE or incr instst MIRL Rwy 15-33—CTAF. MIRL Rwy 15-33 preset low instst.  
**AIRPORT REMARKS:** Unattended. Fuel: 100LL avbl H24 via credit card.  
 Agriculture ops durg summer months.  
**AIRPORT MANAGER:** 320-346-2234  
**COMMUNICATIONS:** CTAF 122.9  
**CLEARANCE DELIVERY PHONE:** For CD ctc Minneapolis ARTCC at 651-463-5588.



**RADIO AIDS TO NAVIGATION:** NOTAM FILE AXN.  
**ALEXANDRIA (VL) (DH) VORW/DME** 115.95 AXN Chan 106(Y)  
 N45°57.50' W95°13.96' 162° 28.2 NM to fld. 1367/7E.  
 VOR unusable:  
 045°-060° byd 30 NM blo 6,400'  
 DME unusable:  
 045°-060° byd 30 NM blo 6,400'  
 146°-153° byd 15 NM