

DULUTH

DULUTH INTL (DLH)(KDLH) P (ANG) 5 NW UTC-6(-5DT) N46°50.52' W92°11.59'

GREEN BAY
H-21, L-141
IAP, DIAP, AD

1428 B AOE LRA ARFF Index—See Remarks NOTAM FILE DLH

RWY 09-27: H10591X150 (CONC-GRVD) S-94, D-180, 2D-650

PCN 75 R/C/W/U HIRL CL

RWY 09: ALSF2. TDZL. PAPI(P4L)—GA 3.0° TCH 70'. RVR-TMR Tree.

RWY 27: MALS. PAPI(P4L)—GA 3.0° TCH 91'. RVR-TMR Thld dsplcd 529'. Tree.

RWY 03-21: H5719X150 (ASPH-GRVD) S-52, D-100, 2D-361

PCN 45 F/B/X/T HIRL

RWY 03: REIL. PAPI(P4L)—GA 3.0° TCH 39'. Tree.

RWY 21: REIL. PAPI(P4L)—GA 3.0° TCH 37'. Tree.

LAND AND HOLD—SHORT OPERATIONS

LDG RWY	HOLD—SHORT POINT	AVBL LDG DIST
RWY 09	03-21	8950

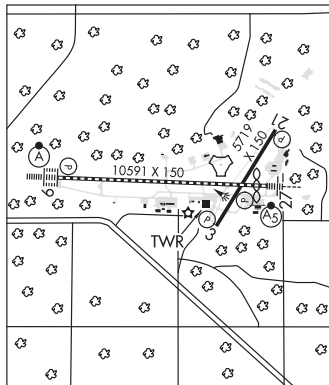
RUNWAY DECLARED DISTANCE INFORMATION

RWY 03: TORA-5719 TODA-5719 ASDA-5719 LDA-5719
RWY 09: TORA-10591 TODA-11152 ASDA-10062 LDA-10062
RWY 21: TORA-5719 TODA-5719 ASDA-5719 LDA-5719
RWY 27: TORA-10591 TODA-10591 ASDA-10591 LDA-10062

ARRESTING GEAR/SYSTEM

RWY 09 TYPE H BAK-12B(B) 1470 FT.

TYPE H BAK 12B(B) 2544 FT. **RWY 27**



SERVICE: S4 **FUEL** 100LL, JET A, J8 **OX** 1, 2, 3, 4 **MILITARY—JASU** 9M(A32A-60) 2(A/M32A-86) 2(MC-11) 6(MC-2A) (MIL) **FUEL** A+, J8 (C218-727-2911). (NC-100LL, A). A++(MIL) (ANG, C218-788-7340.) **FLUID** De-Ice LHOX LHNIT OIL O-148(MIL) JOAP

AIRPORT REMARKS: Attended continuously. Birds on and in/ovf arpt. High speed military jet traffic at 3000' to 3300' MSL in area. When Rwy 03-21 is in use Twy C north of Rwy 09-27 may be restricted by air traffic control to acct with wingspans less than 49'. Windshear/downdrafts final apch Rwy 27. Twy C btwn A and D clsd 1 Oct thru 30 Apr. Taxi lane 'G' may be used as an alternate taxi route. Flight Notification Service (ADCUS) available. Radar See Terminal Flip for Radar Minima. Class I, ARFF Index D. ARFF Index D avbl H24 with 2 hr PPR-ctc ANG 218-788-7434. Acft deice type 1 and 4 fluid avbl-ctc FBO C218-727-2911. US Cust intl AOE (no fees) avbl H24 C218-720-5203 then press 0. Cust clearing lctd at FBO. For mil tsnt acct prkg, rflg, and ser off ANG ctc FBO C218-727-2977 H24. Ldg fee for all coml acct and all acct over 12500 lb max ldg wt exc acct oprd or chtrd by the US Govt or the State of Minnesota. User fee arpt.

MILITARY REMARKS: CAUTION: Bird hazard (phase II conditions) exists during 1 Sep through 31 Oct. Ctc SOF/Afld Manager/Comd Post for info. J8 avbl at both civilian and military fueling facilities. **ANG** PPR all acct. Opr 1200-2130z† Mon-Fri, exc hol and flex days (Ltd opr hr and trans svc avbl). Ctc AFLD Mgmt DSN 825-7252, C218-788-7252, Ops desk DSN 852-7399, C218-788-7399, Comd Post DSN 825-7370/7371, C218-788-7370/7371. Ftr acct and C12/C21 cargo acct may enter ANG Ramp via Twy E or Twy H. All other non-ftr acct use Twy F to enter ANG Ramp. Per Giant report, Twy F currently rstd to only C17/C130 acct. All other cargo AMC acct must park at Midfield Ramp. All tran acct will ctc Comd Post 15 min prior to ldg. Tran acct will ctc Comd Post before engine startup and before taxi. No svc avbl when wind chill exceeds or is forecast to exceed -30F. For RCR info, AFLD status and crash rescue capability ctc Comd Post or twr. Nonstd mrk for alert/maint veh, acct gnd eqpt prk spots.

AIRPORT MANAGER: 218-625-7767

WEATHER DATA SOURCES: ASOS (218) 740-5977

COMMUNICATIONS: ATIS 124.1 270.1 **UNICOM** 122.95 **PTD** 288.9

RCO 122.35 (PRINCETON RADIO)

① **APP/DEP CON** 125.45 233.7

TOWER 118.3 257.8 **GND CON** 121.9 348.6

ANG COMD POST 139.9 288.9 (6735 LSB) (Call DAWGPOUND OPS)

AIRSPACE: CLASS D svc continuous.

RADIO AIDS TO NAVIGATION: NOTAM FILE DLH.

(VH) (H) **VORTACW** 112.6 DLH Chan 73 N46°48.13' W92°12.17' 004° 2.4 NM to fld. 1428/5E.

TACAN/G RCP is same as VOR/G RCP

VOR unusable:

233°-261° blo 10,000'

357°-007° byd 40 NM

LAKESIDE (H) TACAN Chan 11 LKI (135.4) N46°50.63' W92°11.16' at fld. 1424/0W.

Opr 1300-0400z† Tue-Fri 1300-2200z† Mon and Sat. No NOTAM MP: Thu 1400-1600z†

TAC AZM unusable:

045°-060° byd 38 NM blo 3,500'

145°-175°

335°-350°

PYKLA NDB (MHW/LOW) 379 DL N46°50.74' W92°21.30' 092° 6.7 NM to fld. 1421/0E.

ILS 110.3 I-DLH Rwy 09. Class IIE. LOM PYKLA NDB. COMLO unmonitored.

ILS 108.7 I-JUD Rwy 27. Class IB. LOC unusable byd 25° left and right of course.