

**EIELSON AFB** (EIL)(PAEI) AF 17 SE UTC-9(-8DT) N64°39.94' W147°06.09'

548 B NOTAM FILE PAEI

**RWY 14-32:** H14530X150 (CONC-GRVD) PCN 61 R/C/W/T

HIRL(NSTD)

**RWY 14:** ALSF1. PAPI(P4L)—GA 2.7° TCH 54'. RVR-T Rgt tfc.

**RWY 32:** ALSF1. PAPI(P4L)—GA 2.7° TCH 44'. RVR-T Trees.

**ARRESTING GEAR/SYSTEM**

**RWY 14** BAK-12B (1104 FT) (3338 FT). BAK-12B (1248 FT). **RWY 32**

**SERVICE:** **MILITARY—LGT** NSTD rwy edge lgts, N 11314' edge lgts 300' wide, S 3200' edge lgts 150' wide. Caution: NSTD lgt, 2000' of rwy edge lgt btn DELTA-CHARLIE twys lctd 12' from rwy edge. NSTD rwy edge lgts. Edge lgt NSTD Rwy 14-32 at Twy A rwy edge lgt at Twy A entrance on the east side of the rwy, resulting gap between lgt is 446'. Edge lgt NSTD Rwy 14-32 at Twy C rwy edge lgt at Twy C entrance on the east side of the rwy, resulting gap between lgt is 400'. **A-GEAR** Rwy 14-32 BAK-12 dep end cables in raised position; BAK-12 AER 14-32 avbl with 20 min prior notice. North barrier runoff reduced to 950 FT, hook equipped acct be alert. BAK-12(B) Rwy 14 lctd 1104' from apch end, BAK-12(B) Rwy 14 lctd 3338' from apch end, BAK-12(B) Rwy 32 lctd 1248' from apch end. **FLUID**—De-ice avbl, anti-ice unavbl. **TRAN ALERT** Svc 1600-0900Z± Mon-Fri exp hol; aft hr PPR - Basops. Tsnt maint ltd to F16 svc upon aircrew req. F16 thru flight/BPO/preflight insp not authorized.

**NOISE:** Quiet hrs dly 0700-1500Z±.

**MILITARY REMARKS:** Attended dly 1600-0800Z±. No tkof, ldg, lo apch, or TGL, exceptions rqr Ops Group Commander approval. Uncontrolled tkof/ldg not auth. All contingency ops ctc Aflld Mgr for coord ASAP. Ctc airfield management DSN 317-377-1861, C907-377-1861 for PPR number no earlier than 5 days and no later than 24 hr prior to arr. PPR good for +/- 30 min of PPR time. Coord of PPR outside of time by phone is req or PPR nr will be considered cnl. Exp arr time restriction for all acct exc air evac and DV code 7 or higher. Eielson (PAEI) is a 1 MOG station. BASH Phase II Apr, May, Aug & Sep. Gulls, ducks & geese pose hazard when standing water on fld. Rpt bird & animal strikes invof arpt to Aflld Mgmt - DSN 317-377-1861, PTD or 354 FW/SE DSN 317-377-4110. Moose have been spotted on or near the rwy environment all hrs of the day. Dur bird watch cond moderate lcl pattern work ltd to minimum rqr with OG/CC avpl, no touch and go ldg, formation tkf/ldg prohibited and low apch ltd to 300' AGL. Dur bird watch cond severe, tkf, pattern and lndg prohibited without OG/CC avpl, exc for emerg. PAEW on Rwy 14-32 when twr unmanned. Aircrew be advs fld cond NOTAM (FICON) and rwy cond code (RWYCC) not reported by AMOPS. No engine running on-loads/off-loads (ERO) svcs avbl for AMC acct. Rwy 300' wide entire length, ctr 150' usable, dep acct remain at or blw 1500' til dep end of rwy. Ovhd ttc pat alt 2000 ft MSL; rectangular ftr pat alt 1500 ft MSL. All PACAF ftr acct on arr expect reduced rwy separation; similar ftr type/day—3000 ft; dissimilar ftr type and/or ngt wet rwy or RCR rpt less than 17—6000 ft; behind formation lndg—6000 ft; ftr type ldg behind non-ftr type—9000 ft; RCR validated as conditions warrant. Avoid small arms range 2.5 NM E of Rwy 32 end; wkend 1700-0100Z±; sfc-3500 ft AGL. Pre-coordinate with maint ops center DSN 317-377-1205 no later than 48 hrs from ETA. Any deployed or staged acct will not receive TA support bdy initial block in/final block out, unless participating in MAJCOM sponsored exer at Eielson. UHF is the pref pattern freq. VHF PTD freq is unmonitored. Prime Knight not avbl. See AP1 Supplementary arpt rmks. Limited secret and COMSEC storage avbl at aflld management. Aflld mgnt does not have COMSEC responsibilities. For Top Secret and COMSEC issue/storage ctc Command Post DSN 317-377-1500. Caution, fire hydrants lctd 64' NE of Twy H cntrln. Loop twy east of corrosion/hangar 1348 through the 4/8 Bay area rstd to acct with wingspan of 45' or smaller. Portions of apron oscar row and south ramp not visible from twr. Cargo & acr ctc Command Post 3 hr prior & 30 min prior to ldg. Crypto mtrl tsnt crew not avbl. VIP 30 min PPR with chock time - aflld mgnt. Ltd fleet svc. No potable water. Trans billeting extremely ltd/exty fuel delays possible dur RED FLAG ALASKA EXERCISE (Apr-Oct). Alaska ANG 168th AREFS OPS DSN (317-377-8800, C 907-377-8800) ANG opr 24 hrs. Aflld Mgmt DSN 317-377-1861/3201. File flt plan 2 hr bfr dep. Arr rqr customs 1.5 hr PPR—Command Post. U.S. immigration svc not avbl. Acft rrgg terminal and gnd handling svc are rqr'd to provide advance ntc or delays in svc may be experienced. Acft rrgg svc should make prior coord with Aflld Mgmt. Rwy 14 and Rwy 32 PAPI GS not coincidental with ILS GS. ARFF status Critical Level of Svc (CLPS) 62% for USAF Cat 10; and Reduced Level of Svc (RLS) 81% for USAF CAT 9.

**AIRPORT MANAGER:** 907-377-3201

**COMMUNICATIONS:** SFA 318.2 322.3 353.525 ATIS 119.9 273.5 PTD 139.3 372.2

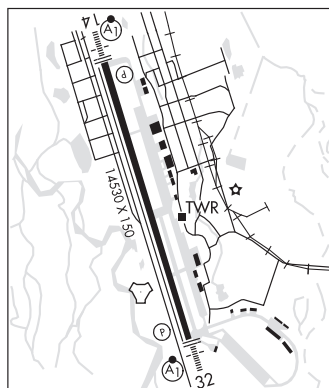
Ⓡ **FAIRBANKS APP CON** 125.35 363.2 (180°-359°) 127.1 251.1 (360°-179°)

**TOWER** 127.2 352.05 (1600-0800Z±) **GND CON** 121.8 275.8 **CLNC DEL** 343.7

Ⓡ **FAIRBANKS DEP CON** 127.1 251.1

**COMD POST (IGLOO)** 259.5

**168 ANG OPS** 238.8 293.6 **PMSV METRO** 346.6



CONTINUED ON NEXT PAGE

## CONTINUED FROM PRECEDING PAGE

**AIRSPACE:** CLASS D svc 1600-0800Z†; other times CLASS E.

**RADIO AIDS TO NAVIGATION:** NOTAM FILE EIL.

(H) **TACAN** Chan 98 EIL (115.1) N64°39.23' W147°05.64' at fld. 542/19E. TACAN unmonitored when twr clsd.

roughness May be expected on all radials

DME unlocks May occur within 4 nm, unlocking is only likely when interrogation is made by high powered /11 kw or greater/ airborne equipment

no NOTAM preventive maint schedule Tue 0700-1000Z†

**TACAN AZIMUTH unusable:**

015°-145° byd 30 NM blo 9,000'

205°-230° byd 20 NM blo 4,400'

210°-220° byd 10 NM blo 2,500'

210°-259° byd 30 NM blo 10,000'

260°-265° byd 20 NM

266°-315° byd 30 NM blo 10,000'

**DME unusable:**

205°-230° byd 20 NM blo 4,400'

**ILS** 110.5 I-EIL Rwy 14. Unmonitored when twr clsd. No NOTAM preventive maint schedule Mon, Wed and Thu 0700-1000Z†. Opr 1600-0800Z† daily.

**ILS** 109.9 I-EAF Rwy 32.

**COMM/NAV/WEATHER REMARKS:** Fairbanks FSS LC 474-0137. For flt advisories or status of rstd and mil opr areas, ctc Eielson Range Control on SUAIS radio 125.3 or telephone 1-800-758-8723. PMSV METRO blo 3000' reception from 300°-090° is ltd byd 15 NM by terrain, blo 15000' ltd byd 75 NM, no limitations within 100 NM at 20000'. Unmmt when PAEI ATCT clsd. Wx H24 - DSN 317-377-3140/1160 fm 1600-0800Z; 0800-1600Z - Comd Post DSN 317-377-1500. Svc priority for to lcl flying sked. Briefing for tran aircrews byd nml opr hrs via 17th OWS at Joint Base Pearl Harbor-Hickam DSN 315-449-8333/7950 or 808-449-8333/7950 or DSN 315-448-3809, C808-448-3809. Augmentation capable 1600-0800Z†. Dur evac of wx station ctc Op Wx Sqdn at number abv. Alternate wx location visibility severely ltd due to bldg and parked acft. Phone patch capability through 354 FW/CP at 907-377-1500. FMQ19 907-377-5846.

**EKUK** (KKU) PVT O S UTC-9(-8DT) N58°48.67' W158°33.53'

**KODIAK**

30 NOTAM FILE Not insp.

**RWY 01-19:** 1200X40 (GRVL-DIRT)

**RWY 01:** Road.

**RWY 19:** Bluff.

**AIRPORT REMARKS:** Unattended. Rwy condition not monitored. Recommend fly over. Rwys not maintained. Rwys soft when wet.

**AIRPORT MANAGER:** 907-842-3842

**COMMUNICATIONS:** CTAF 122.9

**COMM/NAV/WEATHER REMARKS:** For a toll free call to Kenai FSS dial 1-866-864-1737.

**EKWOK** (KEK) O NNW UTC-9(-8DT) N59°21.41' W157°28.27'

**KODIAK**

141 B NOTAM FILE DLG

L-21, 3C

**RWY 02-20:** 3300X75 (GRVL) MIRL 0.6% up N

**RWY 02:** Brush.

**RWY 20:** Trees.

**SERVICE:** LGT ACTVT MIRL Rwy 02-20 and rotating bcn—CTAF.

**AIRPORT REMARKS:** Unattended. Rwy condition not monitored; recommend visual inspection prior to use. Be alert: vehicles cross rwy.

**AIRPORT MANAGER:** 907-842-5511

**COMMUNICATIONS:** CTAF 122.9

**KEMUK MOUNTAIN RCO** 122.55 (DILLINGHAM RADIO) Opr

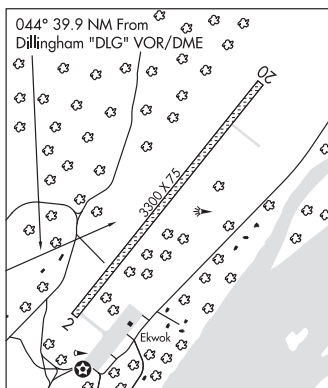
1645-0845Z†, other times ctc Kenai FSS.

**RADIO AIDS TO NAVIGATION:** NOTAM FILE DLG.

**DILLINGHAM (H) (H) VOR/DME** 116.4 DLG Chan 111

N58°59.65' W158°33.13' 041° 39.9 NM to fld. 81/15E.

**COMM/NAV/WEATHER REMARKS:** For a local call to Dillingham FSS dial 907-842-5275. For a toll free call to Kenai FSS dial 1-866-864-1737.



**EL CAPITAN LODGE SPB** (See CRAIG on page 88)

**ELEPHANT** N58°10.26' W135°15.48' NOTAM FILE JNU.

**JUNEAU**

**NDB (HW)** 391 EEF 22/20E.

L-1C