

**EAGLE** (EAA)(PAEG) 2 E UTC-9(-8DT) N64°46.69' W141°08.98'

907 B NOTAM FILE EAA

**Rwy 07-25:** 3600X75 (GRVL) MIRL

**Rwy 07:** VASI(V4L)—GA 3.75° TCH 39'. Hill.

**Rwy 25:** Trees.

**SERVICE:** LGT ACTIVATE MIRL Rwy 07-25, VASI Rwy 07 and rotating bcn—CTAF.

**AIRPORT REMARKS:** Unattended. Cold temperature airport. Altitude correction required at or below -13C. Rwy cond not monitored, recommend visual inspection prior to ldg. 100LL and Jet A avbl by calling 907-547-2220. Helicopter ops from south ramp dur summer months. Rws 07 and 25 marked with reflective thld panels and cones. Report on arr. Cstms unavbl ctc 907-774-2252 for info.

**AIRPORT MANAGER:** 907-883-5128

**WEATHER DATA SOURCES:** ASOS 135.55 (907) 547-2351. (WX CAM)

**COMMUNICATIONS:** CTAF/UNICOM 122.8

RCO 122.3 (NORTHWAY RADIO)

® **ANCHORAGE CENTER APP/DEP CON** 135.3

SUAIS 125.3 126.3 (1-800-758-8723).

**RADIO AIDS TO NAVIGATION:** NOTAM FILE ORT.

**NORTHWAY (H) (H) VORTACW** 116.3 ORT Chan 110 N62°56.83'

W141°54.76' 353° 112.0 NM to fld. 1779/17E.

TACAN AZIMUTH unusable:

335°-030° byd 30 NM blo 10,500'

DME unusable:

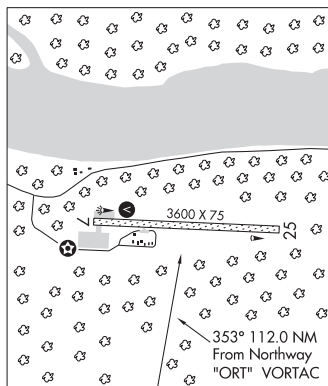
335°-030° byd 30 NM blo 10,500'

**COMM/NAV/WEATHER REMARKS:** For a toll free call to Northway FSS dial 1-800-478-6611. For a toll free call to Fairbanks FSS dial 1-866-248-6516.

DAWSON

L-4K

IAP



## EAGLE RIVER

**D&C FIRE LAKE FLYING CLUB SPB** (D72) 2 N UTC-9(-8DT) N61°21.15' W149°32.78'

ANCHORAGE

295 NOTAM FILE ENA

**WATERWAY N-S:** 3500X200 (WATER)

**SEAPLANE REMARKS:** Unattended. Public beaching area in SW corner of lake. No dock. Beach is steeply sloped, rocks on beach up to 4". Road within 15' of shoreline at beaching area. All other property on lake is private/non commercial. Transient overnight parking avbl. Call before arrival 907-250-7834.

**AIRPORT MANAGER:** 907-250-7834

**COMMUNICATIONS:** CTAF/UNICOM 123.0

**COMM/NAV/WEATHER REMARKS:** For a toll free call to Kenai FSS dial 1-866-864-1737.