

ROCKING T RANCH (11AK) PVT 6 E UTC-9(-8DT) N63°59.98' W145°30.14'

ANCHORAGE

1190 NOTAM FILE Not insp.

RWY 08-26: 2200X30 (GRVL)

RWY 15-33: 1000X30 (GRVL)

RWY 15: Trees.

RWY 33: Trees.

AIRPORT REMARKS: Unattended. Rwy 08-26 not plowed or maintained. Rwy 15-33 not plowed or otherwise maintained. PPR before ldg. Rwy 15-33 loose gravel on sfc. Rwy 15-33 has large rock on sfc.

AIRPORT MANAGER: 907-895-4207

COMMUNICATIONS: CTAF 122.9

COMM/NAV/WEATHER REMARKS: For a toll free call to Fairbanks FSS dial 1-866-248-6516.

WINGSONG ESTATES (AKØ9) PVT 7 N UTC-9(-8DT) N64°02.98' W145°30.14'

FAIRBANKS

1100 NOTAM FILE Not insp.

RWY 15-33: 2380X100 (TURF)

RWY 15: Thld dsplcd 590'. P-lines. Rgt tfc.

AIRPORT REMARKS: Unattended. Rwy conditions not monitored, recommend visual inspection prior to using. No winter maint. Dalgt use only. Trees close in east, west and south of rwy. Recommend Rwy 33 for dep.

AIRPORT MANAGER: (907) 895-5331

COMM/NAV/WEATHER REMARKS: For a toll free call to Fairbanks FSS dial 1-866-248-6516

DELTA JUNCTION N64°01.41' W145°41.21' NOTAM FILE BIG.

ANCHORAGE

NDB (HW) 347 DJN 1338/20E.

H-1B, L-3B, 3E

DENALI (See MCKINLEY PARK on page 179)

DILLINGHAM

DILLINGHAM (DLG)(PADL) 2 W UTC-9(-8DT) N59°02.68' W158°30.33'

KODIAK

82 B ARFF Index—See Remarks NOTAM FILE DLG

H-1B, 2I, L-2I, 3C

RWY 01-19: H6400X150 (ASPH-GRVD) S-116, D-186, 2D-300,

2D/2D2-726 PCN 54 F/C/X/T HIRL

RWY 01: PAPI(P4L)—GA 3.0° TCH 45'.

RWY 19: ODALS. REIL. VASI(V4L)—GA 3.0° TCH 57'. Trees. Rgt tfc.

RUNWAY DECLARED DISTANCE INFORMATION

RWY 01: TORA-6400 TODA-6400 ASDA-6400 LDA-6400

RWY 19: TORA-6400 TODA-6400 ASDA-6400 LDA-6400

SERVICE: S2 FUEL 100LL, JET A LGT When FSS clsd ACTIVATE HIRL

Rwy 01-19, ODALS Rwy 19, VASI Rwy 19 and PAPI Rwy 01—CTAF.

Rot bcn lctd on twr at ARFF bldg, opr unmonitored when DLG FSS unmanned.

AIRPORT REMARKS: Attended 1700-0330Z†. TSA regulated arpt. See 49 CFR 1542. All gates and doors must be secured at all times. Transient or unfamiliar pilots contact arpt mgr with questions. Snow removal, wildlife ctl, cond reporting, and other afld maint svcs only avbl and valid dur arpt maint duty hrs. Ctc arpt mgmt for any after hrs req for afld svcs. For fuel dur business hrs call 907-842-2400 or 907-842-1234, after hrs call 907-842-5491 (land line) or 907-843-1344 (cell) or 907-842-1234. PPR only for arpt hazard reporting rwy, twy or ramp snow ctl. Class I, ARFF Index A. CLOSED to air carrier ops with more than 30 pax seats exc PPR in writing to arpt mgr Box 250 Dillingham AK 99576. Tkfs and llds on twys and ramp prohibited. ARFF eqpt staffed dur periods of air carrier activity only. Personnel and eqpt may be working on the rwy at any time. Rwy lgts are 30' high. Rwy 19 trees in apch 1300' from thld. Ltd transit facility parking. Tran parking designated with green cones. Rwy safety area dimensions on south 3600' (3600' x 300'), north 3289' (3289' x 200'). Arpt sand larger gradation than FAA recommended/see AC150/5200-30. Lock wheeled turns prohibited on any sfc. When the wind is from the southwest, the AWOS wind reading may be unreliable due to trees in close proximity to the sensors.

AIRPORT MANAGER: 907-842-5511

WEATHER DATA SOURCES: AWOS-3P 125.0 (907) 842-2137. AWOS 3 avbl when dlg fss clsd. (WX CAM)

COMMUNICATIONS: CTAF 123.6 AFIS 125.0

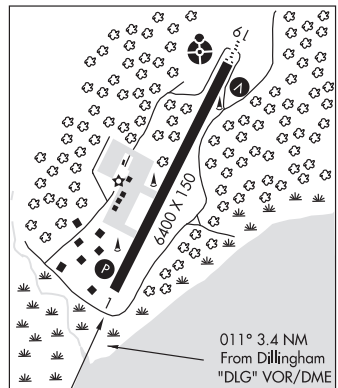
FSS DLG (DILLINGHAM) 1645-0645Z† OT ctc Kenai FSS.

DILLINGHAM RADIO 121.5 122.3 (LAA 123.6)

RCO 121.5 122.3 123.6 (KENAI RADIO)

ANCHORAGE CENTER APP/DEP CON 132.75 282.35

AIRSPACE: CLASS E svc 1645-0845Z†; other times CLASS G.



CONTINUED ON NEXT PAGE

AK, 5 NOV 2020 to 31 DEC 2020

CONTINUED FROM PRECEDING PAGE

RADIO AIDS TO NAVIGATION: NOTAM FILE DLG.

(H) **VOR/DME** 116.4 DLG Chan 111 N58°59.65' W158°33.13' 011° 3.4 NM to fld. 81/15E.

WOOD RIVER NDB (MHW) 429 BTS N58°59.98' W158°32.90' 011° 3.0 NM to fld. 134/15E.

LOC/DME 111.9 I-DLG Chan 56 Rwy 19. LOC unusable within 0.7 NM (1.8 DME) inbound.

COMM/NAV/WEATHER REMARKS: For a local call to Dillingham FSS dial 907-842-5275. For a toll free call to Kenai FSS dial 1-866-864-1737. AFIS opr by Dillingham FSS when open.

NUSHAGAK (AK21) PVT 22 N UTC-9(-8DT) N59°07.96' W157°46.63' **KODIAK**

40 NOTAM FILE Not insp.

RWY 16-34: 1000X50 (TURF)

AIRPORT REMARKS: Unattended. Rwy 16-34 soft during break-up and when wet.

AIRPORT MANAGER: 907-688-2084

COMM/NAV/WEATHER REMARKS: For a local call to Dillingham FSS dial 907-842-5275. For a toll free call to Kenai FSS dial 1-866-864-1737.

SHANNONS POND SPB (AA15) PVT 3 W UTC-9(-8DT) N59°03.54' W158°34.63' **KODIAK**

80 NOTAM FILE

WATERWAY NE-SW: 1400X100 (WATER)

SERVICE: FUEL 10OLL

SEAPLANE REMARKS: Unattended. Fuel avbl 24 hrs with credit card.

Tie-down fee for transient acft. Contact aprt manager at

907-842-2735. SW side of lake shallow.

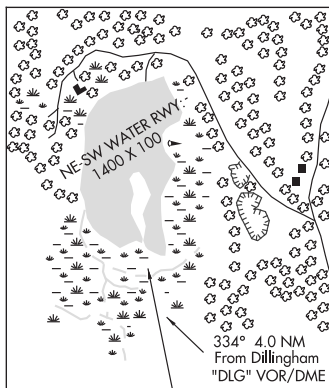
AIRPORT MANAGER: 907-842-2735

COMMUNICATIONS: CTAF 123.6

RADIO AIDS TO NAVIGATION: NOTAM FILE DLG.

DILLINGHAM (H) VOR/DME 116.4 DLG Chan 111 N58°59.65' W158°33.13' 334° 4.0 NM to fld. 81/15E.

COMM/NAV/WEATHER REMARKS: For a local call to Dillingham FSS dial 907-842-5275. For a toll free call to Kenai FSS dial 1-866-864-1737.



DIOMEDE HELIPORT (DM2)(PPDM) 0 N UTC-9(-8DT) N65°45.52' W168°57.18' **NOME**

20 NOTAM FILE OME

HELIPAD HI: H64X64 (CONC)

SERVICE: LGT H1 perimeter lights. Helipad landing lgts OTS indef. Emergency landing zone lgts avbl, call 907-686-3071 or 907-684-3311 to request deployment of lgts.

HELIPORT REMARKS: Unattended. BE ALERT: Diomedes is in very close proximity to Russian airspace. Incursion into Russian airspace is a civil violation.

AIRPORT MANAGER: 907-443-2500

COMMUNICATIONS: CTAF 123.0

COMM/NAV/WEATHER REMARKS: For a local call to Nome FSS dial 443-2291. For a toll free call to Nome FSS dial 1-800-478-8400. For a toll free call to Fairbanks FSS dial 1-866-248-6516.

DRIFT RIVER (See KENAI on page 149)

DRY BAY (See YAKUTAT on page 282)

DUFFYS TAVERN (See SLANA on page 242)

DUNCAN CANAL N56°45.33' W133°10.45' **JUNEAU**

RCO—122.1 (JUNEAU FSS) **L-1C**

DUTCH HARBOR N53°54.31' W166°32.87' NOTAM FILE DUT. **DUTCH HARBOR**

NDB/DME (HW) 283 DUT Chan 86 at Unalaska. 272/9E. **H-21, L-2J**

DME portion unusable:

005°-080°

081°-330° byd 13 NM

331°-004° byd 15 NM