

**DEADHORSE** (SCC)(PASC) 0 SE UTC-9(-8DT) N70°11.69' W148°27.91'

**POINT BARROW**

67 B ARFF Index—See Remarks NOTAM FILE SCC

H-1A, L-4J

**RWY 06-24:** H6500X150 (ASPH-GRVD) S-120, D-250, 2D-550

IAP

PCN 76 F/A/W/T HIRL CL

**RWY 06:** MALSRS. VASI(V4L)—GA 3.0° TCH 50'. RVR-T Rgt tfc.

**RWY 24:** MALSRS. VASI(V4L)—GA 3.0° TCH 54'. RVR-T

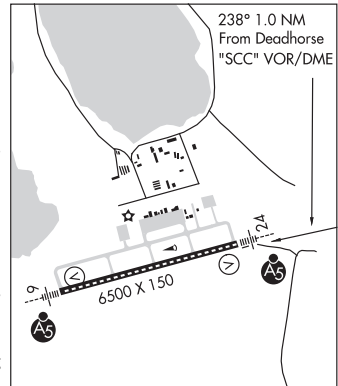
**RUNWAY DECLARED DISTANCE INFORMATION**

**RWY 06:** TORA-6500 TODA-6500 ASDA-6500 LDA-6500

**RWY 24:** TORA-6500 TODA-6500 ASDA-6500 LDA-6500

**SERVICE:** FUEL 100, JET A LGT HIRL Rwy 06-24 opr low ints continuously and MALSRS Rwys 06 and 24 ops continuously. To incr ints ctc Deadhorse FSS 123.6. When FSS clsd ACTIVATE HIRL Rwy 06-24 and MALSRS Rwys 06 and 24—CTAF.

**AIRPORT REMARKS:** Attended 1500-0230Z±, other times on req call 907-659-2553. Fuel avbl on freq 122.85 or 907-659-6215, 0600-1800 lcl. Arpt maint duty hrs 1500-0330Z±. Cold temperature restricted airport. Altitude correction required at or below -45C. Migratory waterfowl invof arpt Spring through Fall. Caribou oncly on rwy and movement areas. Snow removal, wildlife control, cond reporting, and other airfield maint services only avbl and valid during arpt maint duty hrs. Ctc arpt mgmt for any after-hours req for airfield services. Irreg sfc, dip, on W side of main ramp btn Twy C and ARFF twy line. Irreg sfc, dip, Twy A 20' N of hold short line for Rwy 24. Class I, ARFF Index B. CLOSED to air carrier ops with more than 30 pax seats exc with PPR in writing to Arpt Mgr, Pouch 340002, Prudhoe Bay, AK 99734. ARFF svc unavbl without PPR in writing from the arpt mgr. Arpt sand larger gradation than FAA recommended/see AC150/5200-30. TSA regulated airport. See 49 CFR 1542. All gates and doors must be secured at all times. Transient or unfamiliar pilots contact airport manager with questions.



**AIRPORT MANAGER:** 907-659-2553

**WEATHER DATA SOURCES:** ASOS 118.4 (907) 659-2591. (WX CAM)

**COMMUNICATIONS:** CTAF 123.6 AFIS 118.4 UNICOM 123.0

FSS SCC (DEADHORSE) 1500-0630Z±OT CTC FAIRBANKS FAI)

**DEADHORSE RADIO** 121.5 122.2 123.6 (LAA 123.6)

Ⓡ **ANCHORAGE CENTER APP/DEP CON** 134.4

**AIRSPACE:** CLASS E svc continuous.

**RADIO AIDS TO NAVIGATION:** NOTAM FILE SCC.

(H) **VORW/DME** 113.9 SCC Chan 86 N70°11.95' W148°24.97' 238° 1.0 NM to fld. 54/17E.

DME unusable:

143°-190° blo 2,300'

143°-190° byd 16 NM

VOR unusable:

145°-158° blo 3,000'

145°-158° byd 15 NM blo 4,000'

145°-158° byd 20 NM blo 5,000'

145°-158° byd 25 NM blo 6,000'

145°-158° byd 30 NM blo 10,000'

**PUT RIVER NDB (HW)** 376 PVQ N70°13.36' W148°24.97' 194° 2.0 NM to fld. 51/17E.

ILS/DME 109.3 I-SCC Chan 30 Rwy 06. Class I.

**COMM/NAV/WEATHER REMARKS:** Local call to Deadhorse FSS dial 659-2401. For a toll free call to Fairbanks FSS dial 1-866-248-6516. Contract wx observer is avbl with Deadhorse FSS clsd on 133.55 or phone 907-659-2401. AFIS opr by Deadhorse FSS when open.

**INIGOK** (4AK1) PVT 96 W UTC-9(-8DT) N70°00.23' W153°04.65'

**POINT BARROW**

191 B NOTAM FILE FDC Not insp.

H-1A, L-4I

**RWY 02-20:** 5000X150 (GRVL) 0.6% up S

**AIRPORT REMARKS:** Unattended. Closed to the public. Bureau of Land Management (BLM) installation. All acft ops shall obtain a permit prior to intended ldg. Ctc the BLM Arctic Fld Office, 1150 University Avenue, Fairbanks, AK 99709 ([http://www.blm.gov/ak/st/en/fo/fdo/arctic\\_field\\_office.html](http://www.blm.gov/ak/st/en/fo/fdo/arctic_field_office.html)) or call 907-474-2200 to apply for a permit 45 days prior to intended ldg. Failure to obtain and have onboard an apvd permit will result in trespass violations and possibly criminal and civ actions. Rwy not maintained, recommend visual inspection prior to ldg. Rwy 02 multiple soft spots last 2000'. 25' antenna 650' NW of Rwy 02.

**AIRPORT MANAGER:** 907-474-2200

**COMMUNICATIONS:** CTAF/UNICOM 122.8

**COMM/NAV/WEATHER REMARKS:** For a local call to Barrow FSS dial 852-2511. For a toll free call to Fairbanks FSS dial 1-866-248-6516.