

DEERING (DEE)(PADE) 2 SW UTC-9(-8DT) N66°04.15' W162°46.02'

30 B NOTAM FILE DEE

RWY 03-21: 3320X75 (GRVL) MIRL

RWY 03: REIL. PAPI(P4R)—GA 3.0° TCH 25'.

RWY 12-30: 2660X75 (GRVL) MIRL 0.4% up NW

SERVICE: LGT ACTIVATE MIRL Rwy 03-21 and Rwy 12-30; REIL Rwy 03 and PAPI Rwy 03 —CTAF. ACTIVATE rotating bcn —CTAF.

AIRPORT REMARKS: Unattended. Migratory birds as well as musk oxen and other large animals on and in/ov of rwys. Rwy cond not monitored, recommend visual inspection prior to ldg. Cold temperature restricted airport. Altitude correction required at or below -40C. Rwy 03-21 plowed in winter. Windssock missing at Rwy 12. Rwy 03-21 NSTD markings, marked with lgts and plastic markers. Rwy 12-30 NSTD markings, marked with lgts and plastic markers.

AIRPORT MANAGER: 907-442-3147

WEATHER DATA SOURCES: ASOS 135.5 (907) 363-2102. (WX CAM)

COMMUNICATIONS: CTAF 122.9

DEERING RCO 122.25 (KOTZEBUE RADIO)

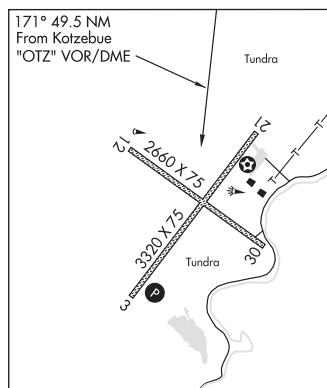
ANCHORAGE CENTER APP/DEP CON 119.2 263.0

RADIO AIDS TO NAVIGATION: NOTAM FILE OTZ.

KOTZEBUE (H) (H) VOR/DME 115.7 OTZ Chan 104 N66°53.14'

W162°32.40' 171° 49.5 NM to fld. 121/15E.

COMM/NAV/WEATHER REMARKS: For a LC to Kotzebue FSS dial 907-442-3310. For a toll free call to Kotzebue FSS dial 1-800-478-7460. For a toll free call to Fairbanks FSS dial 1-866-248-6516.



NOME
L-4H
IAP

DELTA DAVES (See DELTA JUNCTION on page 91)

DELTA JUNCTION

ALL WEST (AK77) PVT 11 E UTC-9(-8DT) N63°56.49' W145°25.33'

1275 NOTAM FILE Not insp.

RWY 09-27: 5500X75 (TURF-GRVL)

AIRPORT REMARKS: Unattended.

AIRPORT MANAGER: 907-895-9800

COMM/NAV/WEATHER REMARKS: For a toll free call to Fairbanks FSS dial 1-866-248-6516.

ANCHORAGE
H-1B, L-1A, 3B, 3E

DELTA DAVES (AA22) PVT 7 NW UTC-9(-8DT) N64°07.97' W145°48.27'

1050 NOTAM FILE Not insp.

RWY 15-33: 2350X60 (TURF)

RWY 15: Trees.

RWY 33: Rgt tfc.

AIRPORT REMARKS: Unattended.

AIRPORT MANAGER: 907-895-4887

COMM/NAV/WEATHER REMARKS: For a toll free call to Fairbanks FSS dial 1-866-248-6516.

FAIRBANKS

DELTA JUNCTION (D66) 1 N UTC-9(-8DT) N64°03.01' W145°43.35'

1150 NOTAM FILE FAI

RWY 07-25: 2500X60 (GRVL)

RWY 07: Trees.

RWY 25: Trees. Rgt tfc.

AIRPORT REMARKS: Unattended. Rwy condition not monitored, recommend visual inspection prior to use. Rwy within 5 miles of Allen Army arfld. Rwy 07 p-line W of rwy marked with orange balls. Cln slope to p-line 33:1. 335' lgtd twr 1 mi S of arpt. Arpt and electricity usage fees apply. Ctc arpt mgmt. Rwy 07-25 edges marked with reflective cones. Transient parking on East end, South side of Rwy 07. Personnel and eqpt may be working on the rwy at any time.

AIRPORT MANAGER: 907-460-6688

COMMUNICATIONS: CTAF 122.9

SUAS 125.3 126.3 (1-800-758-8723).

COMM/NAV/WEATHER REMARKS: For a toll free call to Fairbanks FSS dial 1-866-248-6516.

FAIRBANKS