

**DEERING** (DEE)(PADE) 2 SW UTC-9(-8DT) N66°04.15' W162°46.02'  
 30 B NOTAM FILE DEE  
**RWY 03-21:** 3320X75 (GRVL) MIRL  
**RWY 03:** REIL. PAPI(P4R)—GA 3.0° TCH 25'.

**RWY 12-30:** 2660X75 (GRVL) MIRL 0.4% up NW

**SERVICE:** LGT ACTIVATE MIRL Rwy 03-21 and Rwy 12-30; REIL Rwy 03 and PAPI Rwy 03—CTAF. ACTIVATE rotating bcn—CTAF.

**AIRPORT REMARKS:** Unattended. Migratory birds as well as musk oxen and other large animals on and in/ov of rws. Rwy cond not monitored, recommend visual inspection prior to ldg. Cold temperature airport. Altitude correction required at or below -39C. Rwy 03-21 plowed in winter. Windsock missing at Rwy 12. Rwy 03-21 NSTD markings, marked with lgts and plastic markers. Rwy 12-30 NSTD markings, marked with lgts and plastic markers.

**AIRPORT MANAGER:** 907-442-3147

**WEATHER DATA SOURCES:** ASOS 135.5 (907) 363-2102. (WX CAM)

**COMMUNICATIONS:** CTAF 122.9

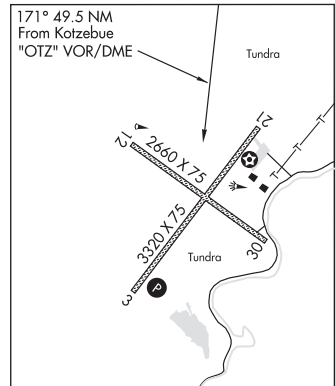
**DEERING RCO** 122.25 (KOTZEBUE RADIO)

**ANCHORAGE CENTER APP/DEP CON** 119.2 263.0

**RADIO AIDS TO NAVIGATION:** NOTAM FILE OTZ.

**KOTZEBUE (H) (H) VOR/DME** 115.7 OTZ Chan 104 N66°53.14' W162°32.40' 171° 49.5 NM to fld. 121/15E.

**COMM/NAV/WEATHER REMARKS:** For a LC to Kotzebue FSS dial 907-442-3310. For a toll free call to Kotzebue FSS dial 1-800-478-7460. For a toll free call to Fairbanks FSS dial 1-866-248-6516.



**NOME**  
**L-4H**  
**IAP**

**DELTA DAVES** (See DELTA JUNCTION on page 91)

## DELTA JUNCTION

**ALL WEST** (AK77) PVT 11 E UTC-9(-8DT) N63°56.49' W145°25.33'

1275 NOTAM FILE Not insp.

**RWY 09-27:** 5500X75 (TURF-GRVL)

**AIRPORT REMARKS:** Unattended.

**AIRPORT MANAGER:** 907-895-9800

**COMM/NAV/WEATHER REMARKS:** For a toll free call to Fairbanks FSS dial 1-866-248-6516.

**ANCHORAGE**  
**H-1B, L-1A, 3B, 3E**

**DELTA DAVES** (AA22) PVT 7 NW UTC-9(-8DT) N64°07.78' W145°48.38'

1050 NOTAM FILE Not insp.

**RWY 15-33:** 2350X60 (TURF)

**RWY 33:** Rgt tfc.

**RWY 06-24:** 1800X100 (TURF-DIRT)

**RWY 06:** Trees.

**AIRPORT REMARKS:** Unattended.

**AIRPORT MANAGER:** 907-895-4887

**COMM/NAV/WEATHER REMARKS:** For a toll free call to Fairbanks FSS dial 1-866-248-6516.

**FAIRBANKS**

**DELTA JUNCTION** (D66) 1 N UTC-9(-8DT) N64°03.01' W145°43.35'

1150 NOTAM FILE FAI

**RWY 07-25:** 2500X60 (GRVL)

**RWY 07:** Trees.

**RWY 25:** Trees. Rgt tfc.

**AIRPORT REMARKS:** Unattended. Rwy condition unmonitored, recommend visual inspection before use. Allen AAF within 5 miles. Rwy 07 p-line marked with orange balls. Clnc slope to p-line 33:1. 335' twr lgtd 1 mi S. Use fee-amgr. Rwy 07-25 NSTD markings. Rwy 07-25 rwy ends marked with reflective cones. Transient parking on East end; South of Rwy 07. Personnel and eqpt on the rwy.

**AIRPORT MANAGER:** 907-460-0066

**COMMUNICATIONS:** CTAF 122.9

**SUAS** 125.3 126.3; 1-800-758-8723.

**COMM/NAV/WEATHER REMARKS:** For a toll free call to Fairbanks FSS dial 1-866-248-6516.

**FAIRBANKS**