

**MERLE K (MUDHOLE) SMITH** (CDV)(PACV) 11 SE UTC-9(-8DT) N60°29.51' W145°28.65'

ANCHORAGE

54 B ARFF Index—See Remarks NOTAM FILE CDV

H-1B, L-1A, 3E, 4H

RWY 09-27: H7500X150 (ASPH-GRVD) S-90, D-153, 2D-280

IAP

PCN 94 F/A/X/T HIRL

RWY 09: ODALS. VASI(V4L)—GA 3.0° TCH 41'. RVR-TR Antenna. Rgt ttc.

RWY 27: MALSR. VASI(V4L)—GA 3.0° TCH 57'. RVR-TR Pole.

RWY 16-34: 1899X30 (GRVL) 0.6% up N

RWY 34: Trees.

**RUNWAY DECLARED DISTANCE INFORMATION**

RWY 09: TORA-7500 TODA-7500 ASDA-7500 LDA-7500

RWY 27: TORA-7500 TODA-7500 ASDA-7500 LDA-7500

**ARRESTING GEAR/SYSTEM**

RWY 27: EMAS

**SERVICE:** LGT ACTIVATE MALSR Rwy 27, ODALS Rwy 09, VASI Rwys 09 and 27, HIRL Rwy 09-27—CTAF. Rwy 09 VASI does not provide obstruction clearance byd 4 NM, unusable byd 4 NM.

**AIRPORT REMARKS:** Attended 1600-0230Z†. Class I, ARFF Index B.

CLOSED to air carrier ops with more than 30 pax seats exc 24 hrs PPR in writing to Arpt Mgr Box 598, Cordova, AK 99574. Arpt maint duty hrs Nov-Apr 1500-0100Z† Mon-Sat, 1500-2400Z†, May-Oct 1500-0330Z† Mon-Thurs, 1600-0230Z† Fri-Sat, 1800-0200Z† Sun. Rwy 16-34 not avbl for scheduled or unscheduled acr ops with more than 30 psgr seats. Snow removal, wildlife control, cond reporting, and other airfield maint services only avbl and valid during arpt maint duty hrs. Ctc arpt mgmt for any after-hours req for airfield services. ARFF eqpt staffed dur periods of air carrier ops only. Erratic winds. Moose only on or near rwy. Large flocks of migratory birds in vicinity dur season. No snow removal or deicing preformed btn 0200-1700Z† daily, Rwy 16-34 marked with 36" orange cones May 1-Oct 25. Rwy cond reports will reflect day ops only. Arpt sand larger gradation than FAA recommended/see AC150/5200-30. TSA regulated airport. See 49 CFR 1542. All gates and doors must be secured at all times. Transient or unfamiliar pilots contact airport manager with questions.

**AIRPORT MANAGER:** 907-424-3202**WEATHER DATA SOURCES:** ASOS 134.8 (907) 424-5900. (WX CAM)**COMMUNICATIONS:** CTAF 123.6

CORDOVA RCO 122.2 123.6 (JUNEAU RADIO)

ANCHORAGE CENTER APP/DEP CON 269.4 133.6 119.3

**AIRSPACE:** CLASS E svc continuous.**RADIO AIDS TO NAVIGATION:** NOTAM FILE CDV.

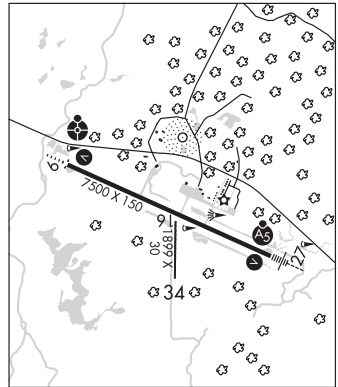
GLACIER RIVER NDB (HW) 404 GCR N60°29.93' W145°28.47' at fld. 55/17E.

ORCA BAY NDB (HW) 233 ALJ N60°28.79' W146°35.25' 070° 33.0 NM to fld. 31/18E.

NDB unusable:

321°-341° byd 40NM blo 7,400'

ILS/DME 110.7 I-CDV Chan 44 Rwy 27. Class I E. LOC unusable beyond 10° north of course.

**COMM/NAV/WEATHER REMARKS:** For a toll free call to Juneau FSS dial 1-866-297-2236. Cordova wx report avbl LC 424-7614 OR 122.65**COTTONWOOD LAKE SPB** (See WASILLA on page 266)