

DEADHORSE

BADAMI (AK78)(PABP) PVT 29 E UTC-9(-8DT) N70°08.25' W147°01.83'

POINT BARROW

26 NOTAM FILE FDC Not insp.

H-1A, L-4J

RWY 04-22: 5100X75 (GRVL) MIRL

RWY 04: PVASI(PSIL)—GA 3.0° TCH 50'.

RWY 22: PVASI(PSIL)—GA 3.0° TCH 50'.

SERVICE: LGT Rwy 04 VGSi unusable beyond 5° left or right of rwy centerline. Rwy 22 VGSi unusable beyond 5° left or right of rwy centerline.

AIRPORT REMARKS: Unattended.

AIRPORT MANAGER: 907-433-3808

COMMUNICATIONS: CTAF 122.9

COMM/NAV/WEATHER REMARKS: For a LC to Deadhorse FSS dial 659-2401. For a toll free call to Fairbanks FSS dial 1-866-248-6516.

DEADHORSE (SCC)(PASC) 0 SE UTC-9(-8DT) N70°11.69' W148°27.91'

POINT BARROW

67 B ARFF Index—See Remarks NOTAM FILE SCC

H-1A, L-4J

RWY 06-24: H6500X150 (ASPH-GRVD) S-120, D-250, 2D-550

IAP

PCN 76 F/A/W/T HIRL CL

RWY 06: MALSR. VASI(V4L)—GA 3.0° TCH 50'. RVR-T Rgt tfc.

RWY 24: MALSR. VASI(V4L)—GA 3.0° TCH 54'. RVR-T

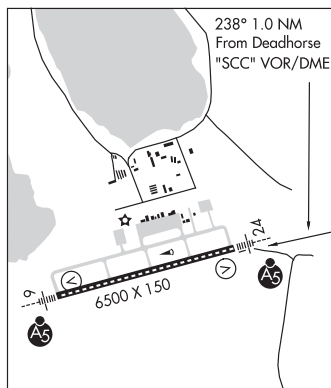
RUNWAY DECLARED DISTANCE INFORMATION

RWY 06: TORA-6500 TODA-6500 ASDA-6500 LDA-6500

RWY 24: TORA-6500 TODA-6500 ASDA-6500 LDA-6500

SERVICE: FUEL 100, JET A LGT HIRL Rwy 06-24 opr low ints continuously and MALSR Rwy 06 and 24 ops continuously. To incr ints ctc Deadhorse FSS 123.6. When FSS clsd ACTIVATE HIRL Rwy 06-24 and MALSR Rwy 06 and 24—CTAF.

AIRPORT REMARKS: Attended 1500-0230Z†, ot on request call 907-978-0645. Fuel avbl on freq 122.85 or 907-659-6215, 0600-1800 lcl. Arpt maint duty hrs 1500-0330Z‡. Migratory waterfowl invof arpt Spring through Fall. Caribou onl on rwy and movement areas. Snow removal, wildlife control, cond reporting, and other airfield maint services only avbl and valid during arpt maint duty hrs. Ctc arpt mgmt for any after-hours req for airfield services. Irreg sfc, dip, on W side of main ramp btn Twy C and ARFF twy line. Irreg sfc, dip, Twy A 20' N of hold short line for Rwy 24. Class I, ARFF Index B. Clsd to acr ops with more than 30 psgr seats excp with PPR in writing to amgr, PO Box 340002, Prudhoe Bay, AK 99734. ARFF svc unavbl without PPR in writing from the arpt mgr. Arpt sand larger gradation than FAA recommended/see AC150/5200-30. TSA regulated airport. See 49 CFR 1542. All gates and doors must be secured at all times. Transient or unfamiliar pilots contact airport manager with questions. NOTE: See Notices—Drone Activity at Coastal Airport Launch Sites.



AIRPORT MANAGER: 907-328-7130

WEATHER DATA SOURCES: ASOS 118.4 (907) 659-2591. (WX CAM)

COMMUNICATIONS: CTAF 123.6 **AFIS** 118.4 (1500-0630Z† OT ctc Fairbanks FSS) **UNICOM** 123.0

FSS SCC (DEADHORSE) 1500-0630Z†OT CTC FAIRBANKS FAI)

DEADHORSE RADIO 121.5 122.2 123.6 (LAA 123.6)

® **ANCHORAGE CENTER APP/DEP CON** 134.4

AIRSPACE: CLASS E svc continuous.

RADIO AIDS TO NAVIGATION: NOTAM FILE SCC.

(H) (H) **VOR/DME** 113.9 SCC Chan 86 N70°11.95' W148°24.97' 238° 1.0 NM to fld. 54/17E.

DME unusable:

143°-190° blo 2,300'

143°-190° byd 16 NM

VOR unusable:

145°-158° blo 3,000'

145°-158° byd 15 NM blo 4,000'

145°-158° byd 20 NM blo 5,000'

145°-158° byd 25 NM blo 6,000'

145°-158° byd 30 NM blo 10,000'

PUT RIVER NDB (HW) 376 PVQ N70°13.36' W148°24.97' 194° 2.0 NM to fld. 51/17E.

ILS/DME 109.3 I-SCC Chan 30 Rwy 06. Class IT.

COMM/NAV/WEATHER REMARKS: Local call to Deadhorse FSS dial 659-2401. For a toll free call to Fairbanks FSS dial 1-866-248-6516. Contract wx observer is avbl with Deadhorse FSS clsd on 133.55 or phone 907-659-2401. AFIS operd by SCC FSS when open, OT Fairbanks FSS.