

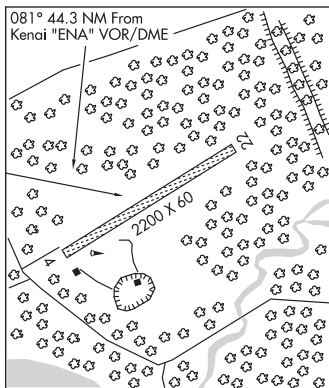
**COOPER LANDING****QUARTZ CREEK** (JLA) 3 E UTC-9(-8DT) N60°29.06' W149°43.37'

ANCHORAGE

466 NOTAM FILE ENA

**RWY 04-22:** 2200X60 (GRVL-DIRT) 0.3% UP NE**RWY 04:** Trees.**RWY 22:** Brush.**AIRPORT REMARKS:** Unattended. State maintenance on irregular basis, recommend visual inspection prior to landing. Rwy 04-22 edges not marked. Windsock is below treeline and may be unreliable.**AIRPORT MANAGER:** 907-262-2199**COMMUNICATIONS:** CTAF 122.9**RADIO AIDS TO NAVIGATION:** NOTAM FILE ENA.**KENAI (H) VOR/DME** 117.6 ENA Chan 123 N60°36.88'

W151°11.71' 081° 44.3 NM to fld. 115/19E.

**COMM/NAV/WEATHER REMARKS:** For a toll free call to Kenai FSS dial 1-866-864-1737.**COPPER CENTER 2** (Z93) 1 S UTC-9(-8DT) N61°56.47' W145°17.64'

ANCHORAGE

1150 NOTAM FILE ENA

**RWY 13-31:** 2200X55 (GRVL-DIRT)**RWY 13:** Tree.**RWY 31:** Tree.**AIRPORT REMARKS:** Unattended. Road runs parallel to rwy 2' from E edge.

Road crosses 405' from Rwy 13 thld. Rwy not maintained and condition not monitored, recommend visual inspection prior to landing. No winter maintenance. Residential property with free roaming guard dogs on east side of rwy. Rwy soft during breakup. Rwy 13-31 safety area 600' South end and 400' north end. Rwy 13 and Rwy 31 NSTD markings, thlds and rwy edges marked with cones. Rwy 31 thld cones damaged/missing, not visible when taxiing on rwy. Grass and brush up to 4 ft high on runway surface during summer months.

**AIRPORT MANAGER:** 907-822-3222**COMMUNICATIONS:** CTAF 122.9**RADIO AIDS TO NAVIGATION:** NOTAM FILE GKN.**GULKANA (H) VOR/DME** 115.6 GKN Chan 103 N62°09.23'

W145°26.84' 144° 13.5 NM to fld. 1549/17E.

**COMM/NAV/WEATHER REMARKS:** For a toll free call to Kenai FSS dial 1-866-864-1737.