

MERLE K (MUDHOLE) SMITH (CDV)(PACV) 11 SE UTC-9(-8DT) N60°29.50' W145°28.65' ANCHORAGE
 53 B ARFF Index—See Remarks NOTAM FILE CDV H-1B, L-1A, 3E, 4H
 RWY 09-27: H7500X150 (ASPH-GRVD) S-90, D-153, 2D-280 IAP
 PCN 94 F/A/X/T HIRL

RWY 09: ODALS. VASI(V4L)—GA 3.0° TCH 41'. RVR-TR Antenna. Rgt tfc.
 RWY 27: MALSR. VASI(V4L)—GA 3.0° TCH 57'. RVR-TR Pole.

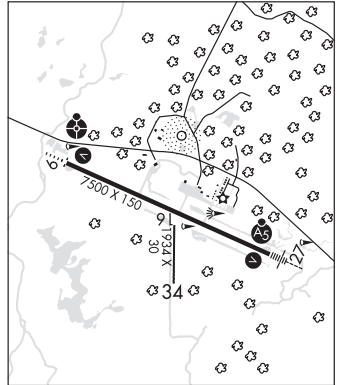
RWY 16-34: 1934X30 (GRVL) 0.6% up N
 RWY 34: Trees.

RUNWAY DECLARED DISTANCE INFORMATION
 RWY 09: TORA-7500 TODA-7500 ASDA-7500 LDA-7500
 RWY 27: TORA-7500 TODA-7500 ASDA-7500 LDA-7500

ARRESTING GEAR/SYSTEM
 RWY 27: EMAS

SERVICE: LGT ACTIVATE MALSR Rwy 27, ODALS Rwy 09, VASI Rwy 09 and 27, HIRL Rwy 09-27—CTAF. Rwy 09 VASI does not provide obstruction clearance byd 4 NM, unusable byd 4 NM.

AIRPORT REMARKS: Attended 1500-0130Z†. Moose oncnly on or near rwy; large flocks of migratory birds in vcnty durg season. Erratic winds. Class I, ARFF Index B. CLOSED to air carrier ops with more than 30 pax seats exc 24 hrs PPR in writing to Arprt Mgr Box 598, Cordova, AK 99574. Arprt maint dty hrs Jan-Dec 1500-0130Z†. Rwy 16-34 not avbl for scheduled or unscheduled acr ops with more than 30 psgr seats. Snow removal, wildlife control, cond reporting, and other airfield maint services only avbl and valid during arprt maint duty hrs. Ctc arprt mgmt for any after-hours req for airfield services. ARFF eqpt staffed dur periods of air carrier ops only. No snow removal or deicing preformed btn 0200-1700Z† daily, Rwy 16-34 marked with 36" orange cones May 1-Oct 25. Rwy cond reports will reflect day ops only. Arprt sand larger gradation than FAA recommended/see AC150/5200-30. TSA regulated airport. See 49 CFR 1542. All gates and doors must be secured at all times. Transient or unfamiliar pilots contact airport manager with questions.



AIRPORT MANAGER: 907-424-3202

WEATHER DATA SOURCES: ASOS 134.8 (907) 424-5900. (WX CAM)

COMMUNICATIONS: CTAF 123.6

CORDOVA RCO 122.2 123.6 (JUNEAU RADIO)

ANCHORAGE CENTER APP/DEP CON 269.4 133.6 119.3

AIRSPACE: CLASS E svc continous.

RADIO AIDS TO NAVIGATION: NOTAM FILE CDV.

GLACIER RIVER NDB (HW) 404 GCR N60°29.93' W145°28.47' at fld. 58/17E.

ORCA BAY NDB (HW) 233 ALJ N60°28.79' W146°35.25' 070° 33.0 NM to fld. 31/18E.

NDB unusable:

321°-341° byd 40NM bto 7,400'

ILS/DME 110.7 I-CDV Chan 44 Rwy 27. Class IE. LOC unusable beyond 10° north of course.

COMM/NAV/WEATHER REMARKS: For a toll free call to Juneau FSS dial 1-866-297-2236. Cordova wx report avbl LC 424-7614

OR 122.65

COTTONWOOD LAKE SPB (See WASILLA on page 258)

COUNCIL (K29) 1 N UTC-9(-8DT) N64°53.80' W163°42.21' NOME
 100 NOTAM FILE OME L-3A, 3C, 4H

RWY 10-28: 3000X60 (TURF) 0.4% up W

RWY 10: Brush.

RWY 28: Brush.

AIRPORT REMARKS: Unattended. Rwy cond not monitored, recommend visual inspection prior to ldg. Rwy not maintained dur winter. Wind tee broken, separated from its post and surrounded by tall brush. Rwy 10-28 NSTD markings, marked with cones and thld panels. Thld panels faded to white. Tall grass on rwy and ramp.

AIRPORT MANAGER: 907-443-2500

COMMUNICATIONS: CTAF 122.9

RADIO AIDS TO NAVIGATION: NOTAM FILE OME.

NOME (H) (H) VORW/DME 115.0 OME Chan 97 N64°29.11'

W165°15.19' 046° 47.0 NM to fld. 95/11E.

COMM/NAV/WEATHER REMARKS: For a toll free call to Nome FSS dial 1-800-478-8400. For a toll free call to Fairbanks FSS dial 1-866-248-6516.

