

COLD BAY

BLINN LAKE SPB (Z87) 3 N UTC-9(-8DT) N55°15.10' W162°45.20'

COLD BAY

50 NOTAM FILE CDB

WATERWAY E-W: 2500X1000 (WATER)

WATERWAY N-S: 2000X1000 (WATER)

SERVICE: FUEL 100LL, JET A LGT Rotating bcn adj on Cold Bay Arpt.

AIRPORT REMARKS: Unattended. Considerable seabird activity—nest on islands. Fuel avbl from Cold Bay Arpt. No delivery avbl.

Must have own truck and cans. Call 907-532-2467 Mon-Fri 9-5 lcl.

COMMUNICATIONS: CTAF 123.6

RADIO AIDS TO NAVIGATION: NOTAM FILE CDB.

COLD BAY (H) (H) VORTACW 112.6 CDB Chan 73 N55°16.04' W162°46.44' 133° 1.2 NM to fld. 99/10E.

VOR unusable:

094°-129° byd 30 NM blo 9,000'

164°-199° byd 20 NM blo 14,000'

164°-199° byd 35 NM

349°-009° blo 10,000'

349°-009° byd 15 NM

TACAN AZIMUTH unusable:

094°-129° byd 30 NM blo 9,000'

164°-199° byd 20 NM blo 14,000'

164°-199° byd 35 NM

269°-279° byd 20 NM

DME unusable:

094°-129° byd 30 NM blo 9,000'

164°-199° byd 20 NM blo 14,000'

164°-199° byd 35 NM

269°-279° byd 20 NM

COMM/NAV/WEATHER REMARKS: Wx and tfc advisories avbl from Cold Bay FSS—123.6.

COLD BAY (CDB)(PACD) 0 N UTC-9(-8DT) N55°12.36' W162°43.58'

COLD BAY

100 B ARFF Index—See Remarks NOTAM FILE CDB

H-2J, L-2J

RWY 15-33: H10179X150 (ASPH-GRVD) S-99, D-200, 2D-345,

IAP, DIAP, AD

2D/2D2-875 PCN 62 F/B/X/T HIRL

RWY 15: MALSR. RVR-T

RWY 33: PAPI(P4L)—GA 3.0° TCH 36'. RVR-R Rgt tfc.

RWY 08-26: H4900X150 (ASPH-GRVD) S-99, D-131, 2D-345

PCN 62 F/B/X/T HIRL

RWY 08: PAPI(P4L)—GA 3.5° TCH 38'.

RWY 26: PAPI(P4L)—GA 3.0° TCH 36'. Rgt tfc.

RUNWAY DECLARED DISTANCE INFORMATION

RWY 08: TORA-4900 TODA-4900 ASDA-4900 LDA-4900

RWY 15: TORA-10179 TODA-10179 ASDA-10179 LDA-10179

RWY 26: TORA-4900 TODA-4900 ASDA-4900 LDA-4900

RWY 33: TORA-10179 TODA-10179 ASDA-10179 LDA-10179

SERVICE: FUEL 100LL, JET A LGT ACTVT MALSR Rwy 15; PAPI Rwy

08, 26 and 33; HIRL Rwy 08-26 and 15-33—CTAF. Rotg bcn

photocell ops. Rotg bcn unmon when FSS unmanned. Rwy 08 PAPI

unusb1 byd 5 deg rgt of cntrl.

AIRPORT REMARKS: Attended Mon-Sat 1600-0300Z. 110LL: Fuel svc

charge aft hrs—call 907-532-2467. Birds invof all rwy apch ends.

Snow, ice removal and arpt haz rptg durg duty hr unless prior arngmt

in writing—Amgr. Class I, ARFF Index B. Clsd to acr ops with more than 30 pax seats excp written PPR—Amgr Box 97

Cold Bay, AK 99571. ARFF avbl for Part 121 carriers involved in ETOPS with 30 min notice. CFR Index B; may be reduced

for acct less than 90 ft. Personnel and equip on rwy. Unlgtd twr 0.4 NM N; unlgtd twr 0.9 NM S; unlgtd twr 4.8 NM NW.

Arpt sand lgr grade than FAA rcmdld/see AC150/5200-30. Brakelock turns NA. No customs avbl; written 24-48 hr PPR

for foreign arr rflg stops—FAX 907-271-2684 or 907-271-2686. NWS weather balloon launch fac lctd on arpt; see

inside back cover for details.

AIRPORT MANAGER: 907-532-5000

WEATHER DATA SOURCES: ASOS 135.75 (907) 532-2639. (WX CAM)

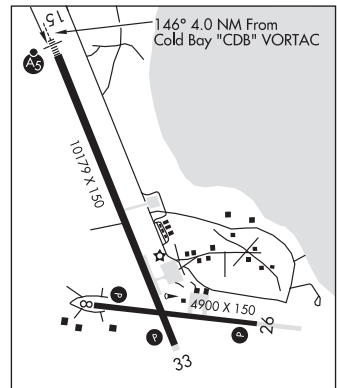
COMMUNICATIONS: CTAF 123.6 FSS CDB (COLD BAY) 1700-0245Z, OT ctc Kenai FSS.

COLD BAY RADIO 121.5 122.2 123.6 (LAA 123.6)

RCO 121.5 122.2 123.6 (KENAI RADIO)

ANCHORAGE CENTER APP/DEP CON 118.5 278.3

AIRSPACE: CLASS E.



CONTINUED ON NEXT PAGE

CONTINUED FROM PRECEDING PAGE

RADIO AIDS TO NAVIGATION: NOTAM FILE CDB.

(H) (H) VORTACW 112.6 CDB Chan 73 N55°16.04' W162°46.44' 146° 4.0 NM to fld. 99/10E.

VOR unusable:

094°-129° byd 30 NM blo 9,000'
 164°-199° byd 20 NM blo 14,000'
 164°-199° byd 35 NM
 349°-009° blo 10,000'
 349°-009° byd 15 NM

TACAN AZIMUTH unusable:

094°-129° byd 30 NM blo 9,000'
 164°-199° byd 20 NM blo 14,000'
 164°-199° byd 35 NM
 269°-279° byd 20 NM

DME unusable:

094°-129° byd 30 NM blo 9,000'
 164°-199° byd 20 NM blo 14,000'
 164°-199° byd 35 NM
 269°-279° byd 20 NM

ELFEE NDB (HW) 341 ELF N55°17.77' W162°47.35' 148° 5.8 NM to fld. 32/10E.

ILS 110.3 I-CDB Rwy 15. Class I E. Localizer backcourse unusable within 6.2 DME; byd 20° left of course; byd 25° right of course.

COMM/NAV/WEATHER REMARKS: For a LC to Cold Bay FSS dial 532-2454. For a toll free call to Cold Bay FSS dial 1-800-478-7250. For a toll free call to Kenai FSS dial 1-866-864-1737. Telephone 532-2448 for WSO.

PORT MOLLER (1AK3)(PAAL) PVT 87 NE UTC-9(-8DT) N56°00.36' W160°33.65'

COLD BAY

20 NOTAM FILE Not insp.

L-21

RWY 01-19: 3500X100 (GRVL)

AIRPORT REMARKS: Unattended. No svc avbl. Recommend visual inspection prior to ldg.

AIRPORT MANAGER: 907-267-1252

COLDFOOT (CXF)(PACX) 0 WSW UTC-9(-8DT) N67°15.13' W150°12.23'

FAIRBANKS

1049 B NOTAM FILE FAI

H-1A, L-4J

RWY 02-20: 4011X75 (GRVL) MIRL 0.4% up N

IAP

RWY 02: Brush.

RWY 20: Trees.

SERVICE: LGT ACTIVATE MIRL Rwy 02-20 and twy lghts—CTAF.

AIRPORT REMARKS: Unattended. Rwy condition not monitored, recommend visual inspection prior to using. Cold temperature airport. Altitude correction required at or below -19C.

AIRPORT MANAGER: 907-451-2207

WEATHER DATA SOURCES: AWOS-3P 118.0 (907) 269-2771. (WX CAM)

COMMUNICATIONS: CTAF 122.9

COLDFOOT RCO 122.0 (FAIRBANKS RADIO)

ANCHORAGE CENTER APP/DEP CON 124.6 352.0

RADIO AIDS TO NAVIGATION: NOTAM FILE BTT.

BETTLES (H) (H) VORW/DME 116.0 BTT Chan 107 N66°54.30'
 W151°32.15' 036° 37.6 NM to fld. 637/20E.

VOR AZIMUTH & DME unusable:

047°-077° byd 24 NM

COMM/NAV/WEATHER REMARKS: For a toll free call to Fairbanks FSS dial 1-866-248-6516.

