

COLD BAY (CDB)(PACD) 0 N UTC-9(-8DT) N55°12.36' W162°43.58'

100 B ARFF Index—See Remarks NOTAM FILE CDB

RWY 15-33: H10179X150 (ASPH-GRVD) S-99, D-200, 2D-345,

2D/2D2-875 PCN 62 F/B/X/T HIRL

RWY 15: MALS. RVR-T

RWY 33: PAPI(P4L)—GA 3.0° TCH 36'. RVR-R Rgt tfc.

RWY 08-26: H4900X150 (ASPH-GRVD) S-99, D-131, 2D-345

PCN 62 F/B/X/T HIRL

RWY 08: PAPI(P4L)—GA 3.5° TCH 38'.

RWY 26: PAPI(P4L)—GA 3.0° TCH 36'. Rgt tfc.

RUNWAY DECLARED DISTANCE INFORMATION

RWY 08: TORA-4900 TODA-4900 ASDA-4900 LDA-4900

RWY 15: TORA-10180 TODA-10180 ASDA-10180 LDA-10180

RWY 26: TORA-4900 TODA-4900 ASDA-4900 LDA-4900

RWY 33: TORA-10180 TODA-10180 ASDA-10180 LDA-10180

SERVICE: FUEL 100LL, JET A LGT ROTG BCN operates on a photocell.

Rwy 08 PAPI unusbl byd 5 deg rgt of cntrn. ACTIVATE HIRL Rwy 08-26 and Rwy 15-33, MALS Rwy 15, PAPI Rwy 08, Rwy 26 and Rwy 33—CTAF.

AIRPORT REMARKS: Attended Mon-Sat 1600-0300Z. Fuel svc charge after hrs. Class I, ARFF Index B. Index may be reduced for act less than 90'.

Large birds near apch ends all rwys. Snow and ice removal and arpt hazard reporting only performed dur duty hrs unless by prior arrangement in writing with arpt mgr. CLOSED to air carrier ops with more than 30 pax seats exc PPR in writing to arpt mgr Box 97 Cold Bay, AK 99571. ARFF is avbl for part 121 carriers involved with ETOPS operations with 30 min notice. Personnel and eqpt may be working on the rwy at any time. Twr 4.8 NM NW of arpt unlgtd, twr 0.9 NM S of arpt unlgtd and twr 0.4 NM N of arpt unlgtd. Arpt sand larger gradation than FAA recommended/see AC150/5200-30. Brake lock turns not allowed on rwys. No cstms avbl written permission rqrd for refueling stops 24-48 hrs in advance if arr from a foreign country, FAX 907-271-2684 or 907-271-2686. Rotating bcn ops unmonitored when Cold Bay FSS unmanned. NWS weather balloon launch facility located on arpt, see inside back cover for opn details.

AIRPORT MANAGER: 907-532-5000

WEATHER DATA SOURCES: ASOS 135.75 (907) 532-2639. (WX CAM)

COMMUNICATIONS: CTAF 123.6 FSS CDB (COLD BAY) 1700-0245Z, OT ctc Kenai FSS.

COLD BAY RADIO 121.5 122.2 123.6 (LAA 123.6)

RCO 121.5 122.2 123.6 (KENAI RADIO)

ANCHORAGE CENTER APP/DEP CON 118.5 278.3

RADIO AIDS TO NAVIGATION: NOTAM FILE CDB.

(H) VORTACW 112.6 CDB Chan 73 N55°16.04' W162°46.44' 146° 4.0 NM to fld. 99/10E.

VOR unusable:

090°-125° byd 30 NM blo 9,000'

160°-195° byd 20 NM blo 14,000'

160°-195° byd 35 NM

345°-005° blo 10,000'

345°-005° byd 15 NM

TACAN AZIMUTH unusable:

090°-125° byd 30 NM blo 9,000'

160°-195° byd 20 NM blo 14,000'

160°-195° byd 35 NM

265°-275° byd 20 NM

DME unusable:

090°-125° byd 30 NM blo 9,000'

160°-195° byd 20 NM blo 14,000'

160°-195° byd 35 NM

265°-275° byd 20 NM

ELFEE NDB (HW) 341 ELF N55°17.77' W162°47.35' 148° 5.8 NM to fld. 32/10E.

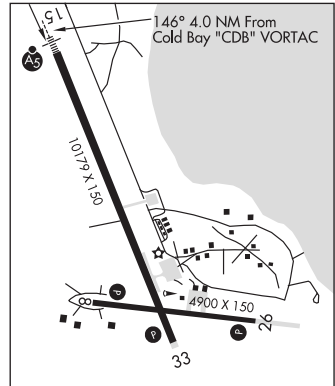
ILS 110.3 I-CDB Rwy 15. Class IE. Localizer backcourse unusable within 6.2 DME; unusable byd 20° left of course.

COMM/NAV/WEATHER REMARKS: For a LC to Cold Bay FSS dial 532-2454. For a toll free call to Cold Bay FSS dial 1-800-478-7250. For a toll free call to Kenai FSS dial 1-866-864-1737. Telephone 532-2448 for WSO.

COLD BAY

H-21, L-21

IAP, DIAP, AD



PORT MOLLER (1AK3)(PAAL) PVT 87 NE UTC-9(-8DT) N56°00.36' W160°33.65'

20 NOTAM FILE Not insp.

RWY 01-19: 3500X100 (GRVL)

AIRPORT REMARKS: Unattended. No svc avbl. Recommend visual inspection prior to ldg.

AIRPORT MANAGER: 907-267-1252

COLD BAY

L-21