

CHITINA (CXC) 4 N UTC-9(-8DT) N61°34.99' W144°25.79'

ANCHORAGE

556 NOTAM FILE ENA

RWY 13-31: 2850X75 (GRVL-DIRT)

RWY 13: Brush.

RWY 31: Brush. Rgt tfc.

AIRPORT REMARKS: Unattended. Rwy cond not monitored; recommend visual inspection prior to landing. Shoulders slope off each side of rwy. 20 ft grvl ridge on west side of rwy. Rwy 31 slopes downhill—no line of sight btn rwy ends. Brush up to 3 ft high on rwy surface 20 ft either side of rwy centerline.

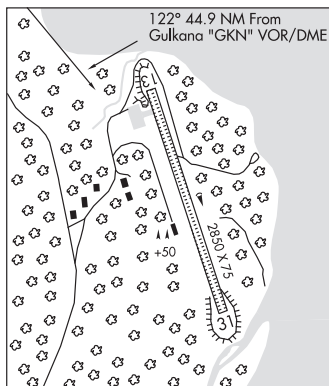
AIRPORT MANAGER: 907-822-3222

COMMUNICATIONS: CTAF 122.9

RADIO AIDS TO NAVIGATION: NOTAM FILE GKN.

GULKANA (H) (H) VOR/DME 115.6 GKN Chan 103 N62°09.23' W145°26.84' 122° 44.9 NM to fld. 1549/17E.

COMM/NAV/WEATHER REMARKS: For a toll free call to Kenai FSS dial 1-866-864-1737.



CHRISTIENSEN LAKE SPB (See TALKEETNA on page 236)

CHUATHBALUK (9A3)(PACH) 1 NE UTC-9(-8DT) N61°34.74' W159°12.94'

MC GRATH

244 B NOTAM FILE ENA

L-3C

RWY 09-27: 3401X60 (GRVL-DIRT) MIRL

IAP

RWY 09: REIL. PAPI(P4L)—GA 3.0° TCH 26'. Berm.

RWY 27: REIL. PAPI(P4L)—GA 4.0° TCH 25'. Brush.

SERVICE: LGT ACTVT REIL Rwy 09 and Rwy 27, PAPI Rwy 09 and Rwy 27, MIRL Rwy 09-27—CTAF. ACTVT rotg bcn—CTAF.

AIRPORT REMARKS: Unattended. Rwy cond not montrd rcmd visual insp prior to use. Cold temperature airport. Altitude correction required at or below -32C. Rwy 09-27 frost heaves and sink holes at end of rwy and ramp.

AIRPORT MANAGER: 907-675-4345

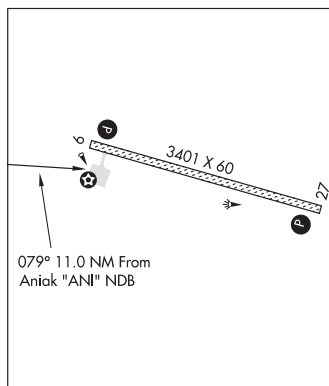
COMMUNICATIONS: CTAF 122.9

Ⓡ ANCHORAGE CENTER APP/DEP CON 118.15

RADIO AIDS TO NAVIGATION: NOTAM FILE ANI.

ANIAK NDB (HW) 359 ANI N61°35.41'

W159°35.87' 079° 11.0 NM to fld. 88/14E.



CHUGIAK

HILLTOP (AK24) PVT 3 N UTC-9(-8DT) N61°25.07' W149°26.37'

ANCHORAGE

420 NOTAM FILE Not insp.

RWY 03-21: 1400X22 (GRVL)

RWY 03: Trees.

RWY 21: Trees.

AIRPORT REMARKS: Unattended. Prior approval required before ldg—ctc owner. Rwy 03-21 narrow with bldgs, trees and activity close to the rwy. Rwy not plowed in winter. Visually inspect prior to Indg. Land at your own risk. STOL acct only.

AIRPORT MANAGER: 907-244-7820

COMMUNICATIONS: CTAF/UNICOM 123.0

COMM/NAV/WEATHER REMARKS: For a toll free call to Kenai FSS dial 1-866-864-1737.