

**CHIGNIK BAY SPB** (Z78) 1 NE UTC-9(-8DT) N56°17.74' W158°24.09'  
00 NOTAM FILE ENA

KODIAK

**WATERWAY NE-SW:** 10000X4000 (WATER)

**WATERWAY E-W:** 6000X4000 (WATER)

**SEAPLANE REMARKS:** Unattended. Beach used for acft pull-up. Lake adjacent to Chignik rwy is often used as a SPB, with a beach at the south end of the lake.

**COMMUNICATIONS:** CTAF 122.8

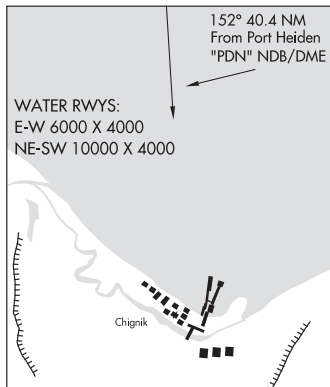
**RADIO AIDS TO NAVIGATION:** NOTAM FILE PTH.

**PORT HEIDEN NDB/DME (HW)** 371 PDN Chan 32 N56°57.26'  
W158°38.85' 152° 40.4 NM to fld. 56/16E.

DME unusable:

050°-110° byd 32 NM blo 6,500'

**COMM/NAV/WEATHER REMARKS:** For a toll free call to Kenai FSS dial 1-866-864-1737.



**CHIGNIK LAGOON** (KCL) 0 S UTC-9(-8DT) N56°18.66' W158°32.07'

KODIAK

28 NOTAM FILE ENA

**RWY 04-22:** 2200X90 (GRVL-DIRT)

**RWY 04:** Trees.

**RWY 22:** Hill. Rgt tfc.

**AIRPORT REMARKS:** Unattended. Rwy condition not monitored, recommend visual inspection prior to using. Seabirds on and in/ov arpt. Vehicle and pedestrians frequently use numerous roads and trails that cross rwy. Loose rocks on rwy sfc up to 6". Rwy 04-22 sfc contains numerous rocks and puddles. Several roads and trails cross Rwy 04-22. Rwy 04 thlds marked with orange reflective cones.

**AIRPORT MANAGER:** 907-246-3325

**COMMUNICATIONS:** CTAF 122.8

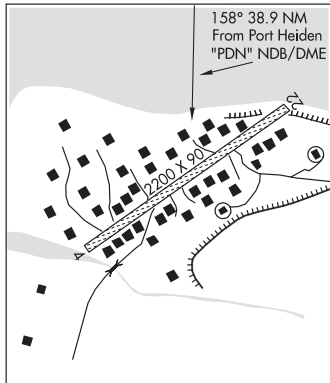
**RADIO AIDS TO NAVIGATION:** NOTAM FILE PTH.

**PORT HEIDEN NDB/DME (HW)** 371 PDN Chan 32 N56°57.26'  
W158°38.85' 158° 38.9 NM to fld. 56/16E.

DME unusable:

050°-110° byd 32 NM blo 6,500'

**COMM/NAV/WEATHER REMARKS:** For a toll free call to Kenai FSS dial 1-866-864-1737.



**CHIGNIK LAKE** (A79) 0 WSW UTC-9(-8DT) N56°15.33' W158°46.67'

COLD BAY

50 NOTAM FILE ENA

**RWY 08-26:** 2800X60 (GRVL) 0.3% up E

**RWY 08:** Brush.

**RWY 26:** Brush.

**AIRPORT REMARKS:** Unattended. Rwy condition not monitored, recommend visual inspection prior to use. Rwy safety areas rough, rutted, and uneven. Rwy slopes down toward the west. Hill South of Rwy 08-26 150' high, runs parallel to rwy. Rwy 08-26 rutted and uneven sfc with no crown, entire length, loose rocks up to 4" on sfc. Rwy 08-26 brush up to 15' along entire rwy length.

**AIRPORT MANAGER:** 907-246-3325

**COMMUNICATIONS:** CTAF 122.8

**RADIO AIDS TO NAVIGATION:** NOTAM FILE PTH.

**PORT HEIDEN NDB/DME (HW)** 371 PDN Chan 32 N56°57.26'  
W158°38.85' 170° 42.2 NM to fld. 56/16E.

DME unusable:

050°-110° byd 32 NM blo 6,500'

**COMM/NAV/WEATHER REMARKS:** For a toll free call to Kenai FSS dial 1-866-864-1737.

