

CHIGNIK BAY SPB (Z78) 1 NE UTC-9(-8DT) N56°17.74' W158°24.09'

KODIAK

00 NOTAM FILE ENA

WATERWAY NE-SW: 10000X4000 (WATER)

WATERWAY E-W: 6000X4000 (WATER)

SEAPLANE REMARKS: Unattended. Beach used for acft pull-up. Lake adjacent to Chignik rwy is often used as a SPB, with a beach at the south end of the lake.

COMMUNICATIONS: CTAF 122.8

RADIO AIDS TO NAVIGATION: NOTAM FILE PTH.

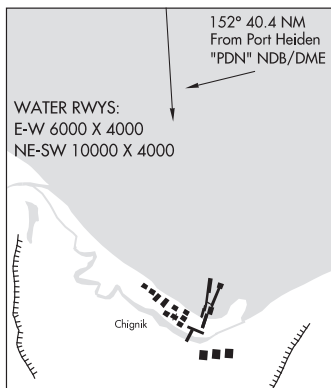
PORT HEIDEN NDB/DME (HW) 371 PDN Chan 32 N56°57.26'

W158°38.85' 152° 40.4 NM to fld. 56/16E.

DME unusable:

050°-110° byd 32 NM blo 6,500'

COMM/NAV/WEATHER REMARKS: For a toll free call to Kenai FSS dial 1-866-864-1737.

**CHIGNIK LAGOON** (KCL) 0 S UTC-9(-8DT) N56°18.66' W158°32.07'

KODIAK

28 NOTAM FILE ENA

RWY 04-22: 2200X90 (GRVL-DIRT)

RWY 04: Trees.

RWY 22: Hill. Rgt tff.

AIRPORT REMARKS: Unattended. Rwy condition not monitored, recommend visual inspection prior to using. Seabirds on and invof arpt. Vehicle and pedestrians frequently use numerous roads and trails that cross rwy. Loose rocks on rwy sfc up to 6". Rwy 04-22 sfc contains numerous rocks and puddles. Several roads and trails cross Rwy 04-22. Rwy 04 thlds marked with orange reflective cones.

AIRPORT MANAGER: 907-246-3325

COMMUNICATIONS: CTAF 122.8

RADIO AIDS TO NAVIGATION: NOTAM FILE PTH.

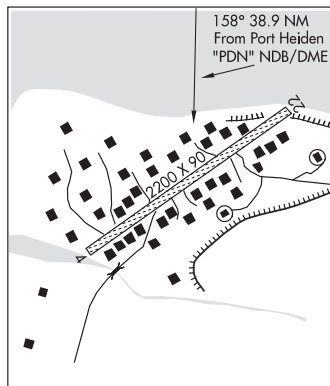
PORT HEIDEN NDB/DME (HW) 371 PDN Chan 32 N56°57.26'

W158°38.85' 158° 38.9 NM to fld. 56/16E.

DME unusable:

050°-110° byd 32 NM blo 6,500'

COMM/NAV/WEATHER REMARKS: For a toll free call to Kenai FSS dial 1-866-864-1737.

**CHIGNIK LAKE** (A79) 0 WSW UTC-9(-8DT) N56°15.33' W158°46.67'

COLD BAY

50 NOTAM FILE ENA

RWY 08-26: 2800X60 (GRVL) 0.3% up E

RWY 08: Brush.

RWY 26: Brush.

AIRPORT REMARKS: Unattended. Rwy condition not monitored, recommend visual inspection prior to use. Rwy safety areas rough, rutted, and uneven. Rwy slopes down toward the west. Hill South of Rwy 08-26 150' high, runs parallel to rwy. Rwy 08-26 rutted and uneven sfc with no crown, entire length, loose rocks up to 4" on sfc. Rwy 08-26 brush up to 15' along entire rwy length.

AIRPORT MANAGER: 907-246-3325

COMMUNICATIONS: CTAF 122.8

RADIO AIDS TO NAVIGATION: NOTAM FILE PTH.

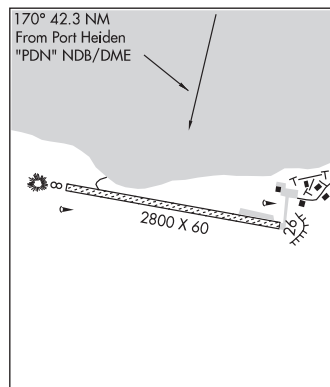
PORT HEIDEN NDB/DME (HW) 371 PDN Chan 32 N56°57.26'

W158°38.85' 170° 42.2 NM to fld. 56/16E.

DME unusable:

050°-110° byd 32 NM blo 6,500'

COMM/NAV/WEATHER REMARKS: For a toll free call to Kenai FSS dial 1-866-864-1737.



CHINOOK N58°44.23' W156°46.70' NOTAM FILE AKN.
NDB (HW) 355 AUB 121° 5.5 NM to King Salmon. 66/11E.

KODIAK

H-1B, 2I, L-2J, 3C