

BEAR LAKE

JOHNSONS LANDING (Z52) 1 S UTC-9(-8DT) N56°02.20' W160°15.97'

KODIAK

130 NOTAM FILE CDB

RWY 09-27: 1325X30 (GRVL)

RWY 27: Brush.

RWY 18-36: 820X20 (GRVL-DIRT)

RWY 18: Brush.

RWY 36: Brush.

AIRPORT REMARKS: Unattended. Bears on and invof arpt. Rwy 18-36, loose gravel up to 4 in on rwy surface. Ruts and dips entire length. Rwy 18-36 brush up to 10 ft high encroaching on rwy edges, rwy is appx 6 ft wide at narrowest point. Not recommended for any acft ops. Rwy 09-27 loose gvl, soft undulating surface with swales up to 18 inches and rocks to 8 inches. Arpt partially on private land. Private property line runs down C/L of Rwy 09-27. Private land S of Rwy 09-27.

AIRPORT MANAGER: 907-283-4117

COMMUNICATIONS: CTAF 122.9

RADIO AIDS TO NAVIGATION: NOTAM FILE CDB.

COLD BAY (H) (H) VORTACW 112.6 CDB Chan 73 N55°16.04'

W162°46.44' 050° 97.0 NM to fld. 99/10E.

VOR unusable:

094°-129° byd 30 NM blo 9,000'

164°-199° byd 20 NM blo 14,000'

164°-199° byd 35 NM

349°-009° blo 10,000'

349°-009° byd 15 NM

TACAN AZIMUTH unusable:

094°-129° byd 30 NM blo 9,000'

164°-199° byd 20 NM blo 14,000'

164°-199° byd 35 NM

269°-279° byd 20 NM

DME unusable:

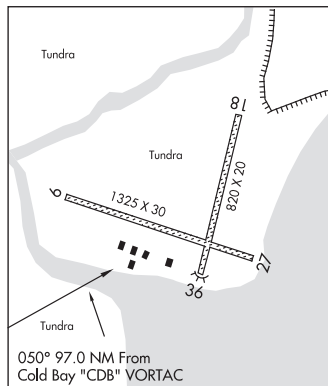
094°-129° byd 30 NM blo 9,000'

164°-199° byd 20 NM blo 14,000'

164°-199° byd 35 NM

269°-279° byd 20 NM

COMM/NAV/WEATHER REMARKS: For a toll free call to Cold Bay FSS dial 1-800-478-7245. For a toll free call to Kenai FSS dial 1-866-864-1737.



BEAVER (WBQ)(PAWB) 0 N UTC-9(-8DT) N66°21.73' W147°24.39'

FAIRBANKS

365 B NOTAM FILE FAI

L-4J

RWY 05-23: 3934X75 (GRVL-DIRT) MIRL

IAF

RWY 05: Trees.

RWY 23: Trees.

SERVICE: LGT ACTIVATE MIRL Rwy 05-23 and rotating bcn—CTAF.

AIRPORT REMARKS: Unattended. Rwy cond not monitored, recommend visual inspection prior to landing. Snow removal ops dur winter—monitor CTAF.

Active road transits rwy 1000' from Rwy 05 thld.

AIRPORT MANAGER: (907) 451-5280

COMMUNICATIONS: CTAF 122.9

FORT YUKON RCO 122.05 (FAIRBANKS RADIO)

YUKON RIVER BRIDGE RCO 122.15 (FAIRBANKS RADIO)

RADIO AIDS TO NAVIGATION: NOTAM FILE FYU.

FORT YUKON (H) (H) VORTACW 114.4 FYU Chan 91 N66°34.46'

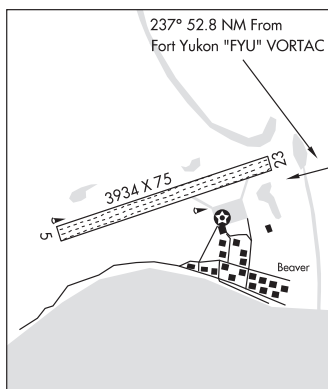
W145°16.60' 237° 52.8 NM to fld. 449/20E.

VOR unusable:

001°-360° byd 15 NM

249°-259° byd 10 NM blo 4,900'

COMM/NAV/WEATHER REMARKS: For a toll free call to Fairbanks FSS dial 1-866-248-6516.



BEAVER LAKE SPB (See BIG LAKE on page 59)