

**ANIAK** (ANI)(PANI) O S UTC-9(-8DT) N61°34.88' W159°32.72'

97 B NOTAM FILE ANI

MC GRATH

H-1B, 2I, L-3C

IAP

**RWY 11-29:** H6200X100 (ASPH-GRVD) S-30, D-120, 2D-126

PCR 405 F/A/X/T HIRL

**RWY 11:** MALSF. PAPI(P4R)—GA 3.0° TCH 35'. Thld dsplcd 400'.

Road.

**RWY 29:** PAPI(P4R)—GA 3.0° TCH 40'. Thld dsplcd 400'. Pole.

**RUNWAY DECLARED DISTANCE INFORMATION**

**RWY 11:** TORA-5800 TODA-6200 ASDA-5800 LDA-5400

**RWY 29:** TORA-5800 TODA-6200 ASDA-5800 LDA-5400

**SERVICE:** S2 FUEL 100LL, JET A LGT ACTVT MALSF Rwy 11; PAPI

Rwy 11 and Rwy 29; HIRL Rwy 11-29—CTAF.

**AIRPORT REMARKS:** Attended: 1 May-14 Oct Mon-Fri 1630-0130Z±. 15 Oct-30 Apr Sun-Sat 1630-0130Z±. PAEW on the rwy. Arpt maint duty hrs 1700-0130Z± Mon thru Fri. 100LL fuel avbl—CTAF or 907-675-4295. Fuel truck aces avbl slough beach E of ramp. Arpt sand ligr gradation than FAA rcmd/See AC150/5200-30. Cold temperature airport. Altitude correction required at or below -37C. Tsnt prkg avbl, mrkd with green cones. Lock wheel turns NA all fscls.

**AIRPORT MANAGER:** 907-764-5094

**WEATHER DATA SOURCES:** AWOS-3P 124.3 (907) 675-4282. (WX CAM)

**COMMUNICATIONS:** CTAF 122.1

RCO 122.45 (KENAI RADIO)

ANCHORAGE CENTER APP/DEP CON 251.05 118.15

CLNC DEL 118.15

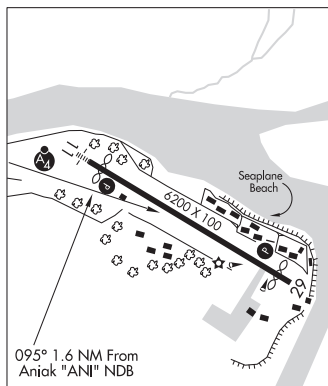
**AIRSPACE:** CLASS E svc 1500-0859Z±; other times CLASS G.

**RADIO AIDS TO NAVIGATION:** NOTAM FILE ANI.

**NDB (HW)** 359 ANI N61°35.41' W159°35.87' 095° 1.6 NM to fld. 88/14E.

**ILS/DME** 109.7 I-ANI Chan 34 Rwy 11. Class IA.

**COMM/NAV/WEATHER REMARKS:** For a toll free call to Kenai FSS dial 1-866-864-1737. Because of natural obstructions AWOS-3 wind may be unrepresentative of rwy wind conditions.



## ANNETTE

**ANNETTE ISLAND** (ANN)(PANT) PVT O N UTC-9(-8DT) N55°02.54' W131°34.25'

119 NOTAM FILE ANN

KETCHIKAN

H-1D, L-1C

**RWY 12-30:** H7493X150 (ASPH)

**RWY 12:** Rgt tfc.

**RWY 02-20:** 5709X150 (GRVL)

**RWY 02:** Trees brush. Rgt tfc.

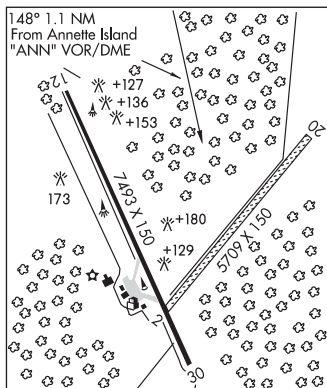
**RWY 20:** Trees brush.

**AIRPORT REMARKS:** Unattended. PPR-Call 907-886-4441 during business hrs. Mountains NE. Rwys not maintained, no snow removal. Soft spots in Rwy 12-30 pavement at 1600' and 2400' from Rwy 12 threshold. Vehicular tfc on both rwys, broken glass, rocks and debris on rwys. Use is for emergency medical evacuations or training. Light ground storage for small planes requesting safe area to store the plane. For emerg call 907-886-4011 (Metlakatla police department) to activate emerg rescue team.

**AIRPORT MANAGER:** 907-886-4441

**COMMUNICATIONS:** CTAF 122.9

RCO 122.4 (KETCHIKAN RADIO)



CONTINUED ON NEXT PAGE

CONTINUED FROM PRECEDING PAGE

RADIO AIDS TO NAVIGATION: NOTAM FILE ANN.

(H) (H) VORW/DME 117.1 ANN Chan 118 N55°03.62' W131°34.70' 146° 1.1 NM to fld. 184/21E.

VOR unusable:

- 000°-100° byd 11 NM blo 12,000'
- 000°-100° byd 15 NM
- 000°-100° byd 9 NM blo 6,500'
- 120°-130° byd 37 NM blo 6,000'
- 290°-320° byd 32 NM blo 7,000'
- 290°-320° byd 37 NM blo 9,000'
- 345°-000° byd 20 NM

DME unusable:

- 000°-100° byd 11 NM blo 12,000'
- 000°-100° byd 15 NM
- 000°-100° byd 9 NM blo 6,500'
- 120°-130° byd 37 NM blo 6,000'
- 290°-320° byd 32 NM blo 7,000'
- 290°-320° byd 37 NM blo 9,000'
- 345°-000° byd 20 NM

NICHOLS NDB (HW) 266 ICK N55°04.25' W131°36.30' 128° 2.1 NM to fld. 119/18E.

COMM/NAV/WEATHER REMARKS: For a LC to Ketchikan FSS dial 225-9481. For a LC to Juneau FSS dial 789-7380.

TAMGAS HARBOR SPB (Z43) 2 NE UTC-9(-8DT) N55°04.08' W131°33.42'

KETCHIKAN

00 NOTAM FILE KTN

WATERWAY NW-SE: 10560X1500 (WATER)

SEAPLANE REMARKS: Unattended. Rock jetty, dock available. Call police department at 907-886-4011 or VHF Channel 80 prior to landing at strip or SPB. Be alert many divers and boaters in the area.

AIRPORT MANAGER: (907) 886-4011

COMMUNICATIONS: CTAF 122.9

RADIO AIDS TO NAVIGATION: NOTAM FILE ANN.

ANNETTE ISLAND (H) (H) VORW/DME 117.1 ANN Chan 118  
N55°03.62' W131°34.70' at fld. 184/21E.

VOR unusable:

- 000°-100° byd 11 NM blo 12,000'
- 000°-100° byd 15 NM
- 000°-100° byd 9 NM blo 6,500'
- 120°-130° byd 37 NM blo 6,000'
- 290°-320° byd 32 NM blo 7,000'
- 290°-320° byd 37 NM blo 9,000'
- 345°-000° byd 20 NM

DME unusable:

- 000°-100° byd 11 NM blo 12,000'
- 000°-100° byd 15 NM
- 000°-100° byd 9 NM blo 6,500'
- 120°-130° byd 37 NM blo 6,000'
- 290°-320° byd 32 NM blo 7,000'
- 290°-320° byd 37 NM blo 9,000'
- 345°-000° byd 20 NM

COMM/NAV/WEATHER REMARKS: For a LC to Ketchikan FSS dial 225-9481. For a LC to Juneau FSS dial 789-7380.

