

ANNETTE

ANNETTE ISLAND (ANN)(PANT) PVT O N UTC-9(-8DT) N55°02.54' W131°34.25'

KETCHIKAN
H-1D, L-1C

119 NOTAM FILE ANN

RWY 12-30: H7493X150 (ASPH)

RWY 12: Rgt tfc.

RWY 02-20: 5709X150 (GRVL)

RWY 02: Trees brush. Rgt tfc.

RWY 20: Trees brush.

AIRPORT REMARKS: Unattended. PPR-Call 907-886-4441 during business hrs. Mountains NE. Rwys not maintained, no snow removal. Soft spots in Rwy 12-30 pavement at 1600' and 2400' from Rwy 12 threshold. Vehicular tfc on both rwys, broken glass, rocks and debris on rwys. Use is for emergency medical evacuations or training. Light ground storage for small planes requesting safe area to store the plane. For emerg call 907-886-4011 (Metlakatla police department) to activate emerg rescue team.

AIRPORT MANAGER: 907-886-4441

COMMUNICATIONS: CTAF 122.9

RCO 122.4 (KETCHIKAN RADIO)

RADIO AIDS TO NAVIGATION: NOTAM FILE ANN.

(H) **VORW/DME** 117.1 ANN Chan 118 N55°03.62' W131°34.70' 146° 1.1 NM to fld. 184/21E.

VOR unusable:

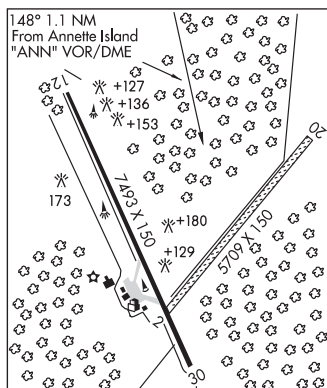
245°-255° byd 19 NM blo 6,000'
295°-305° byd 20 NM blo 9,000'
325°-335° byd 18 NM blo 6,000'
336°-350° byd 24 NM blo 14,000'
351°-099° byd 16 NM blo 17,500'
351°-099° byd 20 NM

DME unusable:

245°-255° byd 19 NM blo 6,000'
295°-305° byd 20 NM blo 9,000'
325°-335° byd 18 NM blo 6,000'
336°-350° byd 24 NM blo 14,000'
351°-099° byd 16 NM blo 17,500'
351°-099° byd 20 NM

NICHOLS NDB (HW) 266 ICK N55°04.25' W131°36.30' 128° 2.1 NM to fld. 119/18E.

COMM/NAV/WEATHER REMARKS: For a LC to Ketchikan FSS dial 225-9481. For a LC to Juneau FSS dial 789-7380.



TAMGAS HARBOR SPB (Z43) 2 NE UTC-9(-8DT) N55°04.08' W131°33.42'

KETCHIKAN

00 NOTAM FILE KTN

WATERWAY NW-SE: 10560X1500 (WATER)

SEAPLANE REMARKS: Unattended. Rock jetty, dock available. Call police department at 907-886-4011 or VHF Channel 80 prior to landing at strip or SPB. Be alert many divers and boaters in the area.

AIRPORT MANAGER: (907) 886-4011

COMMUNICATIONS: CTAF 122.9

RADIO AIDS TO NAVIGATION: NOTAM FILE ANN.

ANNETTE ISLAND (H) VORW/DME 117.1 ANN Chan 118 N55°03.62' W131°34.70' at fld. 184/21E.

VOR unusable:

245°-255° byd 19 NM blo 6,000'
295°-305° byd 20 NM blo 9,000'
325°-335° byd 18 NM blo 6,000'
336°-350° byd 24 NM blo 14,000'
351°-099° byd 16 NM blo 17,500'
351°-099° byd 20 NM

DME unusable:

245°-255° byd 19 NM blo 6,000'
295°-305° byd 20 NM blo 9,000'
325°-335° byd 18 NM blo 6,000'
336°-350° byd 24 NM blo 14,000'
351°-099° byd 16 NM blo 17,500'
351°-099° byd 20 NM

COMM/NAV/WEATHER REMARKS: For a LC to Ketchikan FSS dial 225-9481. For a LC to Juneau FSS dial 789-7380.

