

AKUTAN

AKUTAN (7AK)(PAUT) 6 E UTC-9(-8DT) N54°08.68' W165°36.25'

129 B NOTAM FILE 7AK

RWY 09-27: H4500X75 (ASPH) S-120, D-250 MIRL 0.4% up E

SERVICE: LGT ACTIVATE MIRL Rwy 09-27-CTAF.

AIRPORT REMARKS: Attended 1600-0400Z†. Airport located on Akun Island, shuttle to Akutan is provided by maritime helicopters. Pilots must provide own ropes for tiedown.

AIRPORT MANAGER: (907) 581-1786

WEATHER DATA SOURCES: AWOS-3P 129.05 (907) 302-3081. (WX CAM)

COMMUNICATIONS: CTAF 122.9

Ⓡ **ANCHORAGE CENTER APP/DEP CON** 121.4

GCO 130.3 5 CLICKS FOR KENAI FSS. OCCASIONALLY INOPERATIVE)

RADIO AIDS TO NAVIGATION: NOTAM FILE DUT.

DUTCH HARBOR NDB/DME (HW) 283 DUT Chan 86 N53°54.31' W166°32.87' 057° 36.4 NM to fld. 272/9E.

DME portion unusable:

005°-080°

081°-330° byd 13 NM

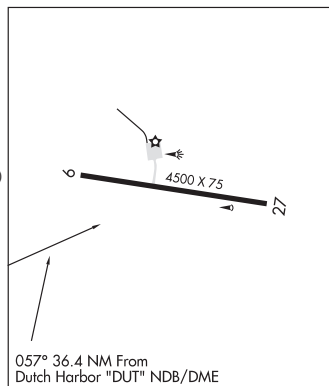
331°-004° byd 15 NM

COMM/NAV/WEATHER REMARKS: For a toll free call to Cold Bay FSS dial 1-866-478-7250.

DUTCH HARBOR

H-2I, L-2J

IAP



AKUTAN SPB (KQA) 0 S UTC-9(-8DT) N54°08.03' W165°46.70'

00 NOTAM FILE CDB

WATERWAY E-W: 1000X1000 (WATER)

SEAPLANE REMARKS: Unattended. Operating area in Akutan Harbor. Access to ramp from landing area has a hard surface for amphibious acft. Daily heli shuttle from Akutan (7AK) on Akun Island. Caution for driftwood and debris in seaplane apr area.

AIRPORT MANAGER: 907-698-2241

WEATHER DATA SOURCES: AWOS-3 129.05.

COMMUNICATIONS: CTAF 122.9

DUTCH HARBOR

ALAKANUK (AUK)(PAUK) 2 S UTC-9(-8DT) N62°40.98' W164°43.33'

22 B NOTAM FILE ENA

RWY 16-34: 4000X75 (GRVL-DIRT) MIRL

RWY 16: Brush.

SERVICE: LGT ACTIVATE MIRL Rwy 16-34 and Rot bcn-CTAF.

AIRPORT REMARKS: Unattended. Rwy condition not monitored, recommend visual inspection prior to landing.

AIRPORT MANAGER: (907) 625-1025

COMMUNICATIONS: CTAF 122.9

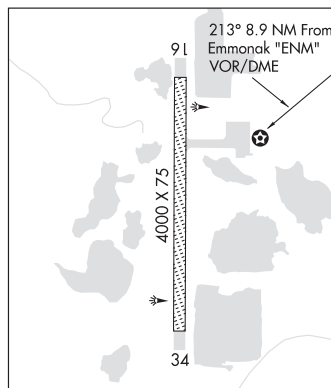
RADIO AIDS TO NAVIGATION: NOTAM FILE ENM.

EMMONAK (H) (H) VOR/DME 117.8 ENM Chan 125 N62°47.08' W164°29.25' 213° 8.9 NM to fld. 17/14E.

COMM/NAV/WEATHER REMARKS: For a toll free call to Kenai FSS dial 1-866-864-1737.

BETHEL

H-1A, 2I, L-3B



ALASKA RGNL HOSPITAL HELIPORT (See ANCHORAGE on page 42)