

VALDEZ PIONEER FLD (VDZ)(PAVD) 3 E UTC-9(-8DT) N61°08.05' W146°14.69'

121 B LRA ARFF Index—See Remarks NOTAM FILE VDZ

RWY 06-24: H6500X150 (ASPH-GRVD) S-75, D-200, 2D-300

PCN 54 F/B/X/T HIRL 1.1% up E

RWY 06: MALSR. PAPI(P4L)—GA 3.0° TCH 29'. Trees. Rgt tfc.

RWY 24: REIL. Trees.

RUNWAY DECLARED DISTANCE INFORMATION

RWY 06: TORA-6500 TODA-6500 ASDA-6500 LDA-6500

RWY 24: TORA-6500 TODA-6500 ASDA-6500 LDA-6500

SERVICE: S2 **FUEL** 100LL, JET A, B **LGT** ACTVT MALSR Rwy 06, REIL Rwy 24, PAPI Rwy 06, HIRL Rwy 06-24—CTAF.

AIRPORT REMARKS: Attended May-Sep 1600-0330Z, Oct-Apr

1500-0330Z. Fuel sales by PPR only. For Jet B 907-834-6933. For

100LL 907-831-0643. Cold temperature restricted airport. Altitude

correction required at or below -11C. Arpt maint duty hrs:

1500-0330Z† Mon-Fri, 1700-0130Z† Sat-Sun. Be alert, during strong northerly winds the winds at midfld and at the east end of the rwy may be significantly higher than the winds detected at the AWOS site. Class I, ARFF Index A. CLOSED to air carrier oprs with more than 30 pax seats exc with PPR in writing to Arpt Manager, PO Box 507 Valdez, AK 99686, 24 hrs in advance, FAX 907-835-5849. Snow removal, wildlife ctl, cond rprt, and other afld maint svcs only avbl and valid dur arpt maint duty hrs. Ctc arpt mgmt for any after hrs req for afld svcs. Arpt sand larger gradation than FAA recommended/see AC 150/5200-30. SW section of ramp (1675 x 200 ft) not maintained Nov 1 to Apr 15. Be alert: See Special Notices—PORT VALDEZ AREA.

AIRPORT MANAGER: 907-835-5658

WEATHER DATA SOURCES: AWOS-3P 118.8 (907) 835-5578. (WX CAM)

COMMUNICATIONS: CTAF 122.9

RCO 122.2 (JUNEAU RADIO)

ANCHORAGE CENTER APP/DEP CON 119.3 269.4

RADIO AIDS TO NAVIGATION: NOTAM FILE VDZ.

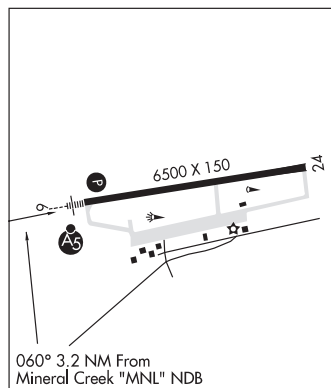
MINERAL CREEK NDB (MHW) 524 MNL N61°07.45' W146°21.13' 060° 3.2 NM to fld. 16/19E.

NDB unusable:

320°-010° byd 15 NM

LDA/DME 109.5 I-VDZ Chan 32 Rwy 06. LOC and DME unusable byd 25° rgt of course all dist and alts. LOC and DME unusable byd 10° left of course all dist and alts. LOC and DME unusable byd 11.2 NM blo 4,635'.

COMM/NAV/WEATHER REMARKS: For a toll free call to Juneau FSS dial 1-866-297-2236.



VALLEY FLYING CROWN (See WASILLA on page 264)

VENETIE (VEE)(PAVE) 1 E UTC-9(-8DT) N67°00.52' W146°21.98'

574 B NOTAM FILE FAI

RWY 04-22: 4000X75 (GRVL) MIRL

RWY 04: Road.

RWY 22: Trees.

SERVICE: **LGT** ACTIVATE MIRL Rwy 04-22 and rot bcn—CTAF. Rotating bcn OTS indef. Twy lgts OTS indef.

AIRPORT REMARKS: Unattended. Maint in winter variable. Rwy 04-22 sfc slippery when wet, sfc uneven and sparsely graveled. Rwy 04 road transits rwy approximately 300' from thld. PPR before landing phone 907-849-8165. Construction equipment and persons operating on and invof rwy.

AIRPORT MANAGER: 907-849-8165

COMMUNICATIONS: CTAF 122.9

ANCHORAGE CENTER APP/DEP CON 135.0

RADIO AIDS TO NAVIGATION: NOTAM FILE FYU.

FORT YUKON (H) VORTACW 114.4 FYU Chan 91 N66°34.46'

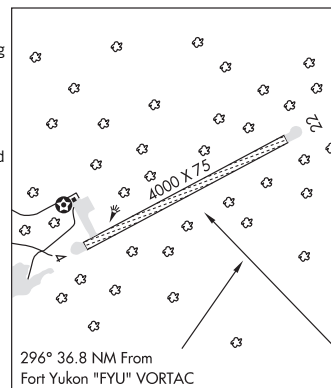
W145°16.60' 296° 36.8 NM to fld. 449/20E.

VOR unusable:

001°-360° byd 15 NM

249°-259° byd 10 NM blo 4,900'

COMM/NAV/WEATHER REMARKS: For a toll free call to Fairbanks FSS dial 1-866-248-6516.



VISNAW LAKE SPB (See WASILLA on page 264)