

**TOKSOOK BAY** (OOK)(PAOO) 1 NE UTC-9(-8DT) N60°32.48' W165°05.23'

**BETHEL**

72 B NOTAM FILE OOK

L-3B

**RWY 16-34:** 3218X60 (GRVL-DIRT) MIRL 0.7% up N

IAP

**RWY 16:** REIL. PAPI(P4L)—GA 4.0° TCH 37'.

**RWY 34:** REIL. PAPI(P4R)—GA 3.0° TCH 30'.

**SERVICE:** LGT ACTVT REIL Rwy 16 and Rwy 34; PAPI Rwy 16 and Rwy 34; MIRL Rwy 16-34, and rotating bcn—CTAF. Rwy 16 PAPI unusbl byd 9° left of cntrln.

**AIRPORT REMARKS:** Unattended. Be Alert: Rwy condition not monitored, recommend visual inspection prior to using. Arpt subject to random and turbulent winds. Freq vehicle and ATV t/c on ramp and rwy. Rwy 16-34 NSTD markings, rwy marked with reflective cones and lgts.

**AIRPORT MANAGER:** (907) 543-2498

**WEATHER DATA SOURCES:** AWOS-3P 119.275 (907) 427-7004. (WX CAM)

**COMMUNICATIONS:** CTAF 122.9

KIPNUK RCO 122.6 (KENAI RADIO)

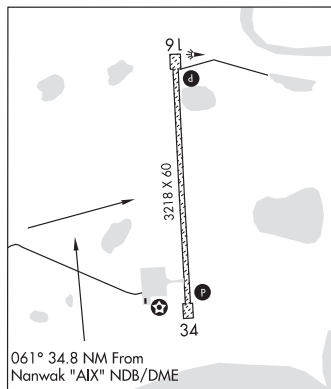
Ⓡ **ANCHORAGE CENTER APP/DEP CON** 125.2

**RADIO AIDS TO NAVIGATION:** NOTAM FILE BET.

**BETHEL (H) (H) VORTACW** 114.1 BET Chan 88 N60°47.09'

W161°49.46' 249° 97.4 NM to fld. 105/14E.

**COMM/NAV/WEATHER REMARKS:** For a toll free call to Kenai FSS dial 1-866-864-1737.



**TOLSONA LAKE SPB** (58A) 0 N UTC-9(-8DT) N62°06.80' W146°02.46'

**ANCHORAGE**

2000 NOTAM FILE ENA

**WATERWAY NW-SE:** 4000X1500 (WATER)

**SERVICE:** S4

**SEAPLANE REMARKS:** Unattended. Airstrip on east side of lake is private.

Public easement across pvt property to access Tolsona Lake. Wind sock is located at the NE corner of the lake.

**AIRPORT MANAGER:** 907-822-3433

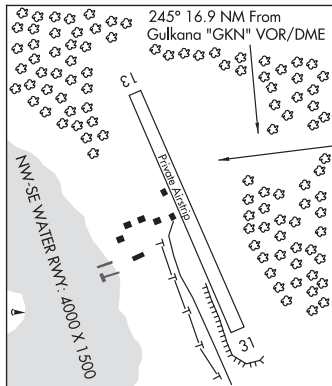
**COMMUNICATIONS:** CTAF 122.9

**RADIO AIDS TO NAVIGATION:** NOTAM FILE GKN.

**GULKANA (H) (H) VOR/DME** 115.6 GKN Chan 103 N62°09.23'

W145°26.84' 245° 16.9 NM to fld. 1549/17E.

**COMM/NAV/WEATHER REMARKS:** For a toll free call to Kenai FSS dial 1-866-864-1737.



**TOTATLANIKA RIVER** (9AK) 2 SW UTC-9(-8DT) N64°01.54' W148°31.34'

**FAIRBANKS**

2717 NOTAM FILE FAI

**RWY 07-25:** 780X30 (GRVL)

**RWY 07:** Brush.

**RWY 25:** Brush.

**AIRPORT REMARKS:** Unattended. Rwy lctd on top of hill. Rwy rises and falls as much as 50'. Rwy slopes downhill from west to east. Land on Rwy 25, depart Rwy 07. Rwy 07-25 rough rock sfc, rock to 4". Runway extremely hazardous, emergency use only. Severe turbulence in all winds. Windsock pole rusted, inoperable.

**COMMUNICATIONS:** CTAF 122.9

**RADIO AIDS TO NAVIGATION:** NOTAM FILE ENN.

**NENANA (H) (H) VORTACW** 115.8 ENN Chan 105 N64°35.40'

W149°04.37' 136° 36.9 NM to fld. 1601/21E.

VOR portion unusable;

086°-096° byd 34 NM blo 5,000'

**COMM/NAV/WEATHER REMARKS:** For a toll free call to Fairbanks FSS dial 1-866-248-6516.

