

SOLDOTNA (SXQ)(PASX) 1 SE UTC-9(-8DT) N60°28.51' W151°02.38'

113 B TPA-906(793) NOTAM FILE SXQ

RWY 07-25: H5001X130 (ASPH) S-12 MIRL 0.3% up E

RWY 07: VASI(V4L)—GA 3.0° TCH 45'. Trees. Rgt tfc.

RWY 25: VASI(V4L)—GA 3.0° TCH 43'. Trees.

RWY 07S-25S: 2300X60 (GRVL-DIRT)

SERVICE: S4 **FUEL** 100LL, JET A **LGT** ACTIVATE MIRL Rwy 07-25 and VASI Rwys 07 and 25 and windsocks—CTAF.

AIRPORT REMARKS: Attended 1600-0100Z†. 100LL fuel avbl 24 hrs with credit card. For Jet A call 907-262-5388 btn 1600-0100Z† or after hrs call 907-420-7153 btn 0100-1300Z†. Call out fee after 0100Z†. Rwy cond not monitored, recommend visual inspection prior to ldg. Ultralight acft invof arpt, no ultralight strip. Grvl ldg area avbl north side and parallel to Rwy 07-25 marked by cones, not maintained in winter. Rwy 07-25 and Rwy 07S-25S, no simultaneous/parallel ops allowed. Sequence on CTAF. Large cargo acft use east ramp for parking/unloading. Transit parking south of terminal bldg rows 26, 27, and 28 and 40 thru 44 only. West apron not maintained. For tie-down info ctc 907-262-4672. Ldg fee for acft 12,500 lbs and over.

AIRPORT MANAGER: 907-262-9107

WEATHER DATA SOURCES: AWOS-3P 135.45 (907) 262-8431. (WX CAM)

COMMUNICATIONS: CTAF 122.5

RCO 122.35 (KENAI RADIO)

Ⓡ **ANCHORAGE CENTER APP/DEP CON** 125.7

RADIO AIDS TO NAVIGATION: NOTAM FILE ENA.

KENAI (H) VORW/DME 117.6 ENA Chan 123 N60°36.88' W151°11.71' 132° 9.6 NM to fld. 115/19E.

NDB/DME (MHW) 346 OLT Chan 106 N60°28.49' W150°52.73' 255° 4.8 NM to fld. 237/15E. NOTAM FILE SXQ.

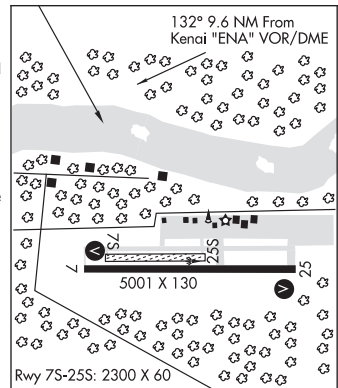
DME elev 223.0'

COMM/NAV/WEATHER REMARKS: For a toll free call to Kenai FSS dial 1-866-864-1737.

ANCHORAGE

H-1B, 2K, L-1A, 3D, 4F

IAP



SOLDOTNA HOSPITAL H HELIPORT (SD1) 1 NW UTC-9(-8DT) N60°29.56' W151°04.74'

99 NOTAM FILE ENA

HELIPAD H1: H80X80 (ASPH) PERIMETER LGTS

SERVICE: LGT Helipad H1 perimeter lgts.

HELIPORT REMARKS: Attended continuously. No ops over hospital.

AIRPORT MANAGER: 907-714-4404

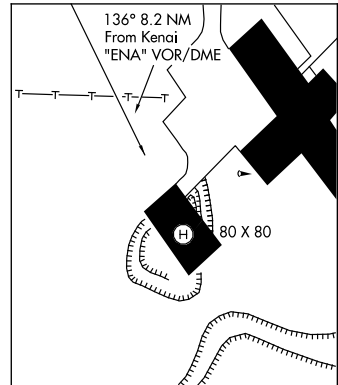
COMMUNICATIONS: CTAF 122.9

RADIO AIDS TO NAVIGATION: NOTAM FILE ENA.

KENAI (H) VORW/DME 117.6 ENA Chan 123 N60°36.88' W151°11.71' 136° 8.1 NM to fld. 115/19E.

COMM/NAV/WEATHER REMARKS: For a toll free call to Kenai FSS dial 1-866-864-1737.

ANCHORAGE



SOLOY STRIP (See WASILLA on page 261)

SONGLO VISTA (See TALKHEETNA on page 238)