

SEATTLE-TACOMA INTL WA (SEA)(KSEA) 10 S UTC-8(-7DT) N47°26.99' W122°18.71'

SEATTLE
H-1B, L-1D
IAP, AD

432 B LRA Class I, ARFF Index E NOTAM FILE SEA

RWY 16L-34R: H11901X150 (CONC-GRVD) S-100, D-230, 2D-600, 2D/2D2-1400 PCN 110R/B/W/T HIRL CL
RWY 16L: ALSF2. TDZL. PAPI(P4L)—GA 3.0° TCH 76'. RVR-TMR 0.6% down.

RWY 34R: MALSRR. TDZL. PAPI(P4L)—GA 2.75° TCH 81'. RVR-TMR 0.8% up.

RWY 16C-34C: H9426X150 (CONC-GRVD) S-120, D-250, 2S-175, 2D-550, 2D/2D2-1120 PCN 96 R/B/W/T HIRL CL
RWY 16C: ALSF2. TDZL. PAPI(P4L)—GA 3.0° TCH 71'. RVR-TMR 0.6% down.

RWY 34C: MALSRR. PAPI(P4L)—GA 3.0° TCH 73'. RVR-TMR Tree. 0.8% up.

RWY 16R-34L: H8500X150 (CONC-GRVD) S-100, D-216, 2D-448, 2D/2D2-1157 PCN 89 R/B/W/T HIRL CL
RWY 16R: ALSF2. TDZL. PAPI(P4R)—GA 3.0° TCH 69'. RVR-TMR 0.6% down.

RWY 34L: MALSRR. PAPI(P4L)—GA 3.0° TCH 75'. RVR-TMR 0.8% up.

RUNWAY DECLARED DISTANCE INFORMATION

RWY 16C:TORA-9426 TODA-9426 ASDA-9426 LDA-9426

RWY 16L:TORA-11901 TODA-11901 ASDA-11901 LDA-11901

RWY 16R:TORA-8500 TODA-8500 ASDA-8500 LDA-8500

RWY 34C:TORA-9426 TODA-9426 ASDA-9426 LDA-9426

RWY 34L:TORA-8500 TODA-8500 ASDA-8500 LDA-8500

RWY 34R:TORA-11901 TODA-11901 ASDA-11901 LDA-11901

SERVICE: FUEL JET A, A1

NOISE: The use of reverse thrust by what is nec for opnl or safety reasons is discouraged at all times. Noise Abatement ft procedures in effect btn 0600-1400Z. For further info ctc SEA Noise Abatement office at 206-787-5393.

AIRPORT REMARKS: Attended continuously. Bird flocks within arpt vcnty, check lcl advisories. 100LL fuel not avbl. Helicopters ldg and dep avoid overflying fuel farm lctd at the southeast corner of the arpt. ASDE-X in use. Opr transponders with altitude reporting mode and ADS-B (if equipped) enabled on all arpt surfaces. Do not mistake Twy T for ldg sfc. Twy A south of Twy G rstd to acft with wingspan 225 ft or less. Taxilane on N side of N stlt rstd to acft with wingspan 118 ft or less. Tri-taxilanes at N stlt. Cntr (Green) taxilane rstd to acft with wingspan of 135 ft or less. When an acft is on the cntr (Green) or otr (Orange/Blue) taxilanes, no otr acft can simul use the adj taxilane(s). Orange and Blue taxilanes are rstd to acft with wingspan 118 ft or less. Two acft can simul use the outer taxilanes. Taxilane W rstd to acft with wingspan of 135 ft or less N of Twy N and 167 ft or less south to Twy N. Seattle ramp twr provides adzy ctl only. Aces to air cargo 4 prkg and cargo areas rstd to acft with wingspan of 170 ft or less. Twy for corporate hngr ramp rstd to acft with wingspan 62 ft or less for taxi ops. GA cust pkgng is very ltd. Acft with wingspans of 171 ft or more parked at PAX gates or cargo 7 must provide 30 min PPR prior to pushback to Seattle ramp twr when vsby less than 2400 RVR. Twys J and H E of Twy T rstd to acft with wingspan 167 ft or less. Rwy 16L-34R rstd to acft with wingspan 260' or less. Twy H E of Rwy 16L-34R rstd to acft with wingspan 118 ft or less when exiting Rwy 16L-34R. Twy B S of Twy Q rstd to acft with wingspan 260 ft or less. Twy B south of air cargo 7 ramp rstd to acft with wingspan 260 ft or less. Air cargo 5 ramp dual eng tax only. PPR for all GA prkg and svcs, ctc 206-433-5481. Op hrs 1330-0500Z, with a call out avbl upon req. 6 hr PPR for AVGAS fueling, ctc 206-433-5481. Rwy status lgts are in operation. Ldg fee. General aviation ldg fees payable by major credit cards only. Flight Notification Service (ADCUS) avbl. NOTE: See Special Notices—Seattle-Tacoma Intl Gatehold Procedures, Oceanic Departures.

AIRPORT MANAGER: (206) 787-5229

WEATHER DATA SOURCES: ASOS (206) 214-2592 WSP.

COMMUNICATIONS: D-ATIS 118.0 206-241-6025 UNICOM 122.95

Ⓡ **SEATTLE APP CON** 119.2 (028°-160° SEA Rwy 16) (017°-079° SEA Rwy 34) 120.1 (223°-289° SEA, Rwy 16) (223°-301° SEA, Rwy 34) 120.4 (301°-340° SEA, Rwy 32) (301°-340° SEA, Rwy 34) 125.6 (Arr West) 125.9 (290°-315° SEA, Rwy 16) (080°-125° SEA Rwy 34) 126.5 (161°-222° SEA, Rwy 16) (126°-222° SEA, Rwy 34) 128.5 (316°-027° SEA, Rwy 16) (302°-016° SEA, Rwy 34) 133.65 (Rwy 16-34) 123.9
SEATTLE TOWER 119.9 (Rwy 16L-34R, Rwy 16C-34C) 120.95 (Rwy 16R-34L)

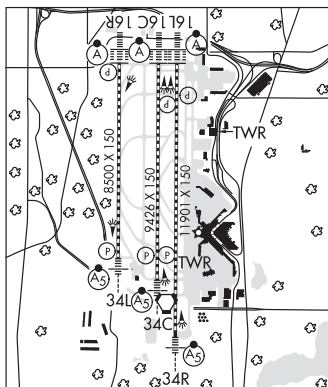
GND CON 121.7 **CLNC DEL** 128.0

Ⓡ **SEATTLE DEP CON** 119.2 (028°-160° SEA Rwy 16) (017°-079° SEA Rwy 34) 120.1 (223°-289° SEA, Rwy 16) (223°-301° SEA, Rwy 34) 120.4 (301°-340° SEA, Rwy 32) (301°-340° SEA, Rwy 34) 125.6 (Arr West) 125.9 (290°-315° SEA, Rwy 16) (080°-125° SEA Rwy 34) 126.5 (161°-222° SEA, Rwy 16) (126°-222° SEA, Rwy 34) 128.5 (316°-027° SEA, Rwy 16) (302°-016° SEA, Rwy 34) 123.9

RAMP CTL 126.25 (Gate Hold) 126.875 (North Ramp) 122.275 (South Ramp)

CPDLC (LOGON KUSA)

PDC



CONTINUED ON NEXT PAGE

CONTINUED FROM PRECEDING PAGE

AIRSPACE: CLASS B See VFR Terminal Area Chart svc; CLASS D.

RADIO AIDS TO NAVIGATION: NOTAM FILE SEA.

(H) (H) VORTACW 116.8 SEA Chan 115 N47°26.12' W122°18.58' at fld. 348/19E.

VOR unusable:

008°-023° byd 20 NM blo 3,500'
 008°-023° byd 30 NM blo 4,100'
 233°-273° byd 20 NM blo 8,000'
 233°-273° byd 30 NM blo 10,000'
 233°-273° byd 35 NM blo 11,000'
 233°-273° byd 8 NM blo 5,500'
 303°-333° byd 20 NM blo 2,900'
 303°-333° byd 30 NM blo 4,000'
 333°-353° byd 15 NM blo 3,500'
 353°-008° byd 20 NM blo 2,900'

DME unusable:

008°-028° byd 20 NM blo 4,500'
 008°-028° byd 30 NM blo 7,000'
 203°-219° byd 27 NM
 220°-225° byd 20 NM
 226°-239° byd 27 NM
 240°-253° byd 15 NM
 303°-008° byd 30 NM blo 3,500'

TACAN AZIMUTH unusable:

008°-163°
 303°-008° byd 30 NM blo 3,500'

ILS/DME 111.7 I-SZI Chan 54 Rwy 16C. Class IIIE. DME also serves Rwy 34C.

ILS/DME 110.3 I-SNQ Chan 40 Rwy 16L. Class IIIE. DME also serves ILS Rwy 34R. Possible Rwy 16L glideslope fluctuation on final when weather is 800/2 or better. Possible Rwy 16L glideslope fluctuation prior to DGLAS when weather is less than 800/2. Localizer unusable byd 15° left of course.

ILS/DME 110.75 I-CJL Chan 44(Y) Rwy 16R. Class IIIE. DME also serves ILS Rwy 34L.

ILS/DME 111.7 I-TUC Chan 54 Rwy 34C. Class IIE. DME also serves ILS Rwy 16C.

ILS/DME 110.75 I-BEJ Chan 44(Y) Rwy 34L. Class IIE.

ILS/DME 110.3 I-SEA Chan 40 Rwy 34R. Class IID. DME also serves ILS Rwy 16L. Poss Rwy 34R glideslope flctn on fa when wx is 800/2 or btr. Poss Rwy 34R glideslope flctn prior to BUCKK when wx is less than 800/2.

COMM/NAV/WEATHER REMARKS: Frq sectors float depending on rwy in use and sectors generally apply to Seattle TCA.

SECLUDED LAKE (See TALKEETNA on page 236)

SELAWIK

ROLAND NORTON MEML AIRSTRIP (8AK3) PVT 12 S UTC-9(-8DT) N66°45.96' W160°09.17'

360 NOTAM FILE

RWY 02-20: 3000X70 (GRVL)

RWY 20: Mtn.

AIRPORT REMARKS: Unattended. Rwy slopes downhill at 3% toward west. Rwy condition not monitored; recommend visual inspection prior to landing. Rwys marked with red and white 55 gallon drums.

COMM/NAV/WEATHER REMARKS: For LC to Kotzebue FSS dial 907-442-3310. For a toll free call to Kotzebue FSS dial 1-800-478-7460. For a toll free call to Fairbanks FSS dial 1-866-248-6516.