

**ST PAUL ISLAND** (SNP)(PASN) 3 NE UTC-9(-8DT) N57°09.98' W170°13.35'

66 B NOTAM FILE SNP

**RWY 18-36:** H6500X150 (ASPH-GRVD) HIRL**RWY 18:** MALSF. PAPI(P4R)—GA 3.0° TCH 46'. Road.**RWY 36:** MALSF. PAPI(P4L)—GA 3.0° TCH 52'. Fence. Rgt tfc.**SERVICE:** FUEL JET A LGT ACTIVATE MALSF Rwy 18 and Rwy 36; PAPI Rwy 18 and Rwy 36; HIRL Rwy 18-36—CTAF.**AIRPORT REMARKS:** Unattended. 3 wind turbines approx 100' tall, 1/4 mile southwest of Rwy 36 apch end. 625' lgtd twr one mile southwest. 45' twr 350' west and 1000' north thld Rwy 36 lgtd. Rwy 18-36 1000' safety area on north and south end. Pilots are requested to avoid flights blw 1000' AGL from May 14 through September 14 in those areas of St. Paul Island with active bird populations, and flts blw 1000' AGL from September 14 through December 14 in those areas of St. Paul Island with coastal seal rookeries. NWS weather balloon launch facility located on airport, see inside back cover for operation details.**AIRPORT MANAGER:** (907) 581-1786**WEATHER DATA SOURCES:** ASOS 135.75 (907) 546-2324. (WX CAM)**COMMUNICATIONS:** CTAF 122.3

RCO 122.45 (KENAI FSS)

ANCHORAGE CENTER APP/DEP CON 119.1 339.8

**RADIO AIDS TO NAVIGATION:** NOTAM FILE SNP.**NDB/DME (HW) 314** SPY Chan 36 N57°09.42' W170°13.98' at fld. 31/10E.

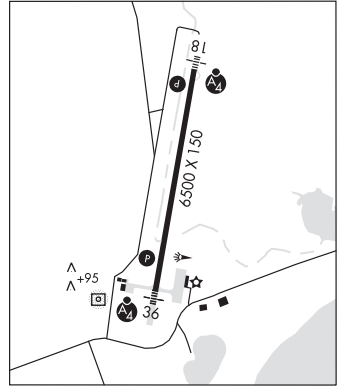
range 150 mi

DME portion unusable:

015°-035° byd 15 NM blo 9,000'

215°-280° byd 25 NM blo 8,000' and 280-015 byd 20 NM blo 9,000'

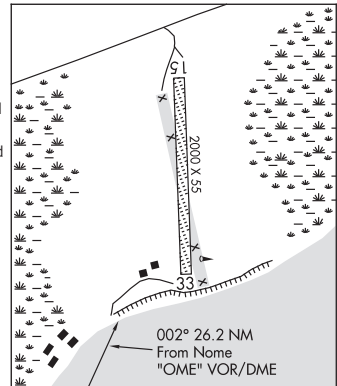
ILS 109.9 I-PAU Rwy 36. Class IE. LOC Rwy 36 unusable byd 25° left and right of course.

**COMM/NAV/WEATHER REMARKS:** For a toll free call to Kenai FSS dial 1-866-864-1737.**SALMON LAKE** (Z81) 0 NW UTC-9(-8DT) N64°54.54' W165°00.88'

509 NOTAM FILE OME

**RWY 15-33:** 2000X55 (GRVL) 1.7% up N**RWY 15:** Brush.**RWY 33:** Road.**AIRPORT REMARKS:** Unattended. Rwy not maintained and condition not monitored, recommend visual inspection prior to using. High terrain all quadrants. Rwy 15-33 marked with cones and thld panels. Rwy used as a road. Rwy 15-33 slopes uphill southeast to northwest, Rwy 15 thld about 40' higher. Rwy 15-33 soft when wet and contains several 6" rocks. Rwy 33 end is rocky.**AIRPORT MANAGER:** 907-443-3431**COMMUNICATIONS:** CTAF 122.9**RADIO AIDS TO NAVIGATION:** NOTAM FILE OME.**NOME (H) (H) VOR/DME** 115.0 OME Chan 97 N64°29.11'

W165°15.19' 002° 26.2 NM to fld. 95/11E.

**COMM/NAV/WEATHER REMARKS:** For a toll free call to Nome FSS dial 1-800-478-8400. For a toll free call to Fairbanks FSS dial 1-866-248-6516.002° 26.2 NM  
From Nome  
"OME" VOR/DME

NOME