

ST PAUL ISLAND (SNP)(PASN) 3 NE UTC-9(-8DT) N57°09.98' W170°13.35'

DUTCH HARBOR

66 B NOTAM FILE SNP

H-21, L-21, 3B

RWY 18-36: H6500X150 (ASPH-GRVD) HIRL

IAP

RWY 18: MALSF. PAPI(P4R)—GA 3.0° TCH 46'. Road.

RWY 36: MALSF. PAPI(P4L)—GA 3.0° TCH 52'. Fence. Rgt tfc.

SERVICE: FUEL JET A LGT ACTVT MALSF Rwy 18 and Rwy 36; PAPI Rwy 18 and Rwy 36; HIRL Rwy 18-36—CTAF.

AIRPORT REMARKS: Unattended. Rwy 36 rwy end three 100' wind turbines 1/4 mi SW of apch end. 45' twr 350' W and 1000' N. 625' lgtd twr one mi SW. Rwy 18-36 1000' safety area on N and S end. Avoid fit blw 1000' May 14 - Sep 14 in areas with active bird populations and otr times in areas with coastal seal rookeries. Wx bln launch fac on arpt, see inside back cover for oprn details.

AIRPORT MANAGER: 907-581-1786

WEATHER DATA SOURCES: ASOS 135.75 (907) 546-2324. (WX CAM)

COMMUNICATIONS: CTAF 122.3

RCO 122.45 (KENAI FSS)

ANCHORAGE CENTER APP/DEP CON 119.1 339.8

RADIO AIDS TO NAVIGATION: NOTAM FILE SNP.

NDB/DME (HW) 314 SPY Chan 36 N57°09.42'

W170°13.98' at fld. 31/10E.

range 150 mi

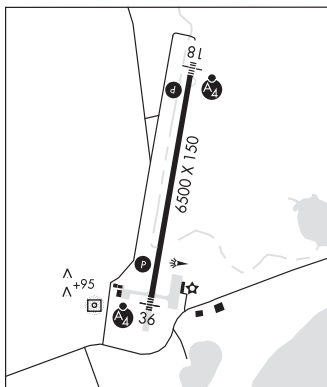
DME portion unusable:

015°-035° byd 15 NM blo 9,000'

215°-280° byd 25 NM blo 8,000' and 280-015 byd 20 NM blo 9,000'

ILS 109.9 I-PAU Rwy 36. Class IE. LOC Rwy 36 unusable byd 25° left and right of course.

COMM/NAV/WEATHER REMARKS: For a toll free call to Kenai FSS dial 1-866-864-1737.



SALMON LAKE (Z81) 0 NW UTC-9(-8DT) N64°54.54' W165°00.88'

NOME

509 NOTAM FILE OME

RWY 15-33: 2000X55 (GRVL) 1.7% up N

RWY 15: Brush.

RWY 33: Road.

AIRPORT REMARKS: Unattended. Rwy not maintained and condition not monitored, recommend visual inspection prior to using. High terrain all quadrants. Rwy 15-33 marked with cones and thld panels. Rwy 15-33 slopes uphill southeast to northwest, Rwy 15 thld about 40' higher. Rwy 15-33 soft when wet and contains several 6" rocks. Rwy 33 end is rocky.

AIRPORT MANAGER: 907-443-3431

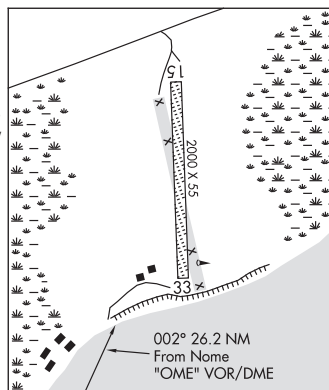
COMMUNICATIONS: CTAF 122.9

RADIO AIDS TO NAVIGATION: NOTAM FILE OME.

NOME (H) (H) VOR/DME 115.0 OME Chan 97 N64°29.11'

W165°15.19' 002° 26.2 NM to fld. 95/11E.

COMM/NAV/WEATHER REMARKS: For a toll free call to Nome FSS dial 1-800-478-8400. For a toll free call to Fairbanks FSS dial 1-866-248-6516.



SAN JUAN (UGANIK) SPB (WSJ) 0 W UTC-9(-8DT) N57°43.82' W153°19.24'

KODIAK

00 NOTAM FILE ADQ

WATERWAY N-S: 10000X2000 (WATER)

SEAPLANE REMARKS: Unattended. Waterfowl invof Indg area. Dock or shore line near the cannery suitable for safe seaplane ops.

Seaplane dock has been destroyed, boat dock is not safe for seaplane docking. Heavy swells during NW winds.

COMMUNICATIONS: CTAF 122.8

RADIO AIDS TO NAVIGATION: NOTAM FILE ADQ.

KODIAK (H) (H) VOR/DME 117.1 ODK Chan 118 N57°46.50' W152°20.39' 252° 31.6 NM to fld. 133/14E.

VOR unusable:

190°-310° byd 15 NM blo 12,000'

DME unusable:

154°-265° byd 15 NM blo 12,000'

266°-305°

306°-341° byd 15 NM blo 12,000'