

**PORTLAND INTL** OR (PDX)(KPD) P (ANG) 4 NE UTC-8(-7DT) N45°35.32' W122°35.81'

**SEATTLE**  
H-1B, L-1C  
IAP, DIAP, AD

31 B LRA Class I, ARFF Index E NOTAM FILE PDX

**RWY 10R-28L:** H11000X150 (CONC-GRVD) S-200, D-200, 2S-175,  
2D-360 PCN 89 R/D/W/T HIRL CL

**RWY 10R:** ALSF2. TDZL. PAPI(P4R)—GA 3.0° TCH 71'. RVR-TMR Rgt  
tfc.

**RWY 28L:** MALSR. PAPI(P4L)—GA 3.0° TCH 72'. RVR-TMR

**RWY 10L-28R:** H9825X150 (ASPH-GRVD) S-200, D-200, 2S-175,  
2D-400 PCN 133F/D/W/T HIRL CL

**RWY 10L:** MALSR. PAPI(P4L)—GA 3.0° TCH 51'. RVR-TMR Thld dspcd  
1290'.

**RWY 28R:** MALSR. PAPI(P4R)—GA 3.0° TCH 70'. RVR-TMR Thld  
dspcd 535'. Road. Rgt tfc.

**RWY 03-21:** H6000X150 (ASPH-GRVD) S-120, D-250, 2S-175,  
2D-380 PCN 82 F/D/X/T MIRL

**RWY 03:** REIL. PAPI(P4L)—GA 3.3° TCH 60'.

**RWY 21:** REIL. PAPI(P4R)—GA 3.6° TCH 32'. Road.

**RUNWAY DECLARED DISTANCE INFORMATION**

**RWY 03:** TORA-6000 TODA-6000 ASDA-6000 LDA-6000

**RWY 10L:** TORA-9825 TODA-9825 ASDA-9825 LDA-8535

**RWY 10R:** TORA-11000 TODA-11000 ASDA-11000 LDA-11000

**RWY 21:** TORA-6000 TODA-6000 ASDA-6000 LDA-6000

**RWY 28L:** TORA-11000 TODA-11000 ASDA-11000 LDA-11000

**RWY 28R:** TORA-9825 TODA-9825 ASDA-9825 LDA-9290

**ARRESTING GEAR/SYSTEM**

**RWY 10R** TYPE-H BAK-12B(B) (1625).

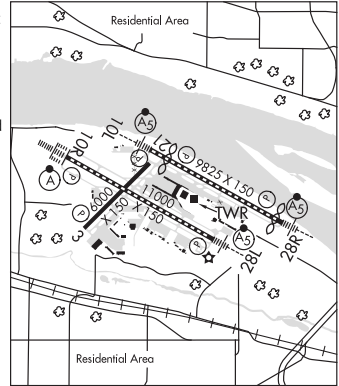
TYPE-H BAK-12B(B) (2000). **RWY 28L**

**SERVICE:** S4 **FUEL** 100LL, JET A **OX** 1, 2, 3, 4 **LGT** RWY 03 PAPI unusbl byd 4 deg left and rgt of RCL and byd 5 NM unusbl. **MILITARY—** JASU 4(A/M32A-86) (MC-11) 1(MA-1A) **FUEL** A (C503-331-4220). J8 (Mil) (NC-100LL, A) **FLUID** LHOXRB OIL O-128-133-148(Mil) **TRAN ALERT** No tran svc avbl.

**NOISE:** NS ABTMT procedures in effect call noise office, 503-460-4100. Rwy 28L arr are noise sensitive, exp apch to Rwy 28R with transition to Rwy 28L.

**AIRPORT REMARKS:** Attended continuously. Arpt clsd to non-pwrd acct exc in emerg. Migratory and wintering flocks of large waterfowl on and in/ovf arpt. Heavy seagull acct Sep-Apr, exp high number of birds yr round, check Icl advisories. ASSC in use. Operate transponders with altitude reporting mode and ADS-B (if equipped) enabled on all airport surfaces. Rwy 28R perimeter road at 200' from rwy thld and 408' rgt from rwy extdd cntrln. Unclt tfc at Pearson Fld Vancouver WA, 3 NM west of Rwy 10L thld on extdd cntrln. Rwy 21 clsd to Height Group IV acct with cockpit to wheel hgt greater than 22'. Rwy 28R 60' levee road lctd aprxly parallel to rwy at 200' fm thr and 507' rt fm rwy extndd cntrln. Twy W clsd to acct with wingspan grt than 118 ft unless under tow. Twy K btn Twy A5 and Twy V clsd to acct with wingspan more than 168 ft. Twy M btn Twy E and Twy T clsd to acct wingspan more than 118 ft. Twy A3 btn Twy A and the GA ramp clsd to acct with wingspan grt than 135 feet unless under tow. At the west end arm/dearm area on Twy C no acct of any type may taxi past the arm/dearm area while it is being used. Acft authorized to utilize the NW ramp will be towed to/from this ramp. Area of Twy T btn M and E3 not vsb fm twr. Twy T btn exits B5 and B6 clsd to acct with wingspan grt than 118 ft. Twy C3 clsd to acct with wingspan equal to or grt than 79 ft. Twy V clsd to acct with wingspan greater than 168 ft. Acft with wingspan greater than 118 ft prohibited fm turning WB onto Twy A fm Twy V unless under tow. Acft with wingspan greater than 118' are prohibited from turning eastbound on Twy C from southwestbound on Twy F unless under tow. Twy E3 clsd to acct with wingspan greater than 198'. Twy T btn Twy E3 and Twy B5 clsd to acct with wingspan grt than 198 ft. Twy C between Twy C6 and Twy C8 clsd to acct with wingspan greater than 180'. Twy T btn Twy E2 and Twy E3 clsd to acct wingspan more than 118 ft. Twy K btn Twy V and Twy A4 clsd to acct wingspan more than 118 ft. 180° turns by acct weighing in excess of 12,500 lbs prohibited on Rwy 10L-28R, Rwy 03-21 and all twys. PDX has fac constraints that lmt its ability to accommodate divid fits and mnntn the arpt safe opn dur ireg ops. Acft oprs shud ctc the arpt duty mgr at (503) 460-4236 to coord divid fits exc in the case of a declared in-flt emerg. Ldg fee. Coml acct and oprs of acct with an FAA certified max gross ldg wt that exceeds 10,000 lbs are rqrtd to pay a ldg fee. Possible Rwy 28L glideslope fluctuation prior to addum when weather is greater than 800/2. Flight Notification Service (ADCUS) avbl.

**MILITARY REMARKS:** ANG See FLIP AP/1 for Supplementary Arpt Information. Hazardous bird cond exist. Phase I May-Oct, Phase II Nov-Apr. Current bird watch cond are not reported on ATIS. PPR/Official Business Only. Base ops opr 1500-2300Z† Mon-Fri exc hnd, DSN 638-4390, C503-335-4390. Ctc Base OPS 15 mins prior to ldg and after departing on 281.2. Tran quarters not avbl. **CAUTION:** Obst lgtg is not NVD compatible. NVD not authorized while airborne in/ovf afld. NSTD yellow park spot designators and equipment tool box location painted on ramp. Please ctc base ops or req follow me if not familiar with Portland ANG base park procedures.



CONTINUED ON NEXT PAGE

## CONTINUED FROM PRECEDING PAGE

AIRPORT MANAGER: 503-415-6195

WEATHER DATA SOURCES: ASOS (503) 493-7687 WSP.

COMMUNICATIONS: D-ATIS 128.35 269.9 (503) 493-7557 UNICOM 122.95

① APP/DEP CON 118.1 284.6 (100°-279° HIGH) 124.35 299.2 (280°-099°) 126.9 (APCH FINAL)

TOWER 118.7 257.8 (Rwy 10L-28R) 123.775 251.125 (Rwy 03-21 and Rwy 10R-28L)

GND CON 121.9 348.6 CLNC DEL 120.125 318.1

AFR OPNS 138.45 252.8 ANG COMD POST 288.9 (Stump Town)

ANG OPNS 280.5 PORTLAND GUARD OPS 281.2

CPDLC (LOGON KUSA)

PDC

AIRSPACE: CLASS C svc ctc APP CON.

RADIO AIDS TO NAVIGATION: NOTAM FILE PDX.

BATTLE GROUND (H) VORTACW 116.6 BTG Chan 113 N45°44.87' W122°35.49' 160° 9.6 NM to fld. 253/21E.

TACAN AZIMUTH &amp; DME unusable:

035°-085° byd 35 NM blo 10,000'

COLUMBIA (H) TACAN Chan 29 CBU (109.2) N45°35.32' W122°36.68' at fld. 22/20E.

TACAN unusable:

020°-030° byd 30 NM blo 9,500'

030°-050° byd 20 NM blo 9,500'

120°-130° byd 15 NM blo 8,500'

155°-250° byd 15 NM blo 10,500'

250°-270° byd 20 NM blo 8,500'

ILS/DME 111.3 I-VDG Chan 50 Rwy 10L. Class IT. DME also serves Rwy 28R.

ILS/DME 110.5 I-PDX Chan 42 Rwy 10R. Class IIIE. DME also serves Rwy 28L.

LOC/DME 108.9 I-GPO Chan 26 Rwy 21.

ILS/DME 110.5 I-JMJ Chan 42 Rwy 28L. Class IT. DME also serves Rwy 10R. Autocoupled apch not applicable blw 880' MSL (2.4NM from thld).

ILS/DME 111.3 I-IAP Chan 50 Rwy 28R. DME also serves Rwy 10L.

COMM/NAV/WEATHER REMARKS: PDX monitors 121.5 for McMinville (MMV).

POTATO POINT N61°03.80' W146°42.12'

RCO—122.4 (JUNEAU FSS)

ANCHORAGE

L-1A, 3D, 4G

PRIBILOF N56°34.31' W169°38.85' NOTAM FILE ENA.

NDB/DME (HW) 399 SRI Chan 96 at St George. 95/7E.

DME unusable:

000°-090° byd 12 NM blo 18,000'

090°-180° byd 10 NM blo 8,000'

280°-300° byd 18 NM blo 8,000'

300°-000° byd 10 NM blo 3,000'

300°-000° byd 14 NM blo 18,000'

RCO 122.5 (KENAI RADIO)

DUTCH HARBOR

H-21, L-21, 3B

PROSPECT CREEK (PPC)(PAPR) 3 NE UTC-9(-8DT) N66°48.84' W150°38.62'

1095 B NOTAM FILE PPC

RWY 01-19: 4968X150 (GRVL) MIRL

RWY 01: REIL. PAPI(P2L)—GA 3.0° TCH 39'. Brush.

RWY 19: REIL. PAPI(P2L)—GA 3.0° TCH 40'.

AIRPORT REMARKS: Unattended. Arpt maintained by pvt company. All arpt lgts privately owned and operated. Ltd snow removal. Arpt lgts opr 24 hrs. Recommend visual inspection prior to using. Rwy condition not monitored. Rotating bcn lctd on Alyeska flt advisory bldg is on only when the facility is manned at Prospect Creek.

AIRPORT MANAGER: (907) 787-8959

COMMUNICATIONS: CTAF 122.9

RADIO AIDS TO NAVIGATION: NOTAM FILE BTT.

BETTLES (H) VORW/DME 116.0 BTT Chan 107 N66°54.30'

W151°32.15' 084° 21.8 NM to fld. 637/20E.

VOR AZIMUTH &amp; DME unusable:

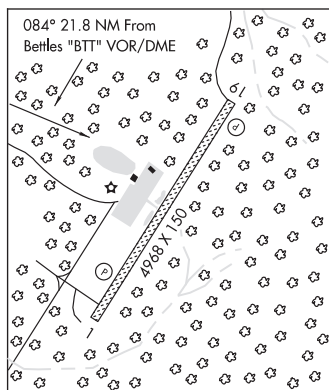
047°-077° byd 24 NM

COMM/NAV/WEATHER REMARKS: For a toll free call to Fairbanks FSS dial

1-866-248-6516.

FAIRBANKS

H-1B, L-4J



PROVIDENCE HOSPITAL HELIPORT (See ANCHORAGE on page 44)