

PORTLAND INTL OR (PDX)(KPDX) P (ANG) 4 NE UTC-8(-7DT) N45°35.32' W122°35.81'

SEATTLE

31 B LRA Class I, ARFF Index E NOTAM FILE PDX

H-1B, L-1C

RWY 10R-28L: H11000X150 (CONC-GRVD) S-200, D-200, 2S-175,

2D-360 PCN 89 R/D/W/T HIRL CL

RWY 10R: ALSF2. TDZL. PAPI(P4R)—GA 3.0° TCH 71'. RVR-TMR Rgt tfc.

RWY 28L: MALS. PAPI(P4L)—GA 3.0° TCH 72'. RVR-TMR

RWY 10L-28R: H9825X150 (ASPH-GRVD) S-200, D-200, 2S-175,

2D-400 PCN 133F/D/W/T HIRL CL

RWY 10L: MALS. PAPI(P4L)—GA 3.0° TCH 51'. RVR-TMR Thld dspcd 1290'.

RWY 28R: MALS. PAPI(P4R)—GA 3.0° TCH 70'. RVR-TMR Thld dspcd 535'. Road. Rgt tfc.

RWY 03-21: H6000X150 (ASPH-GRVD) S-120, D-250, 2S-175,

2D-380 PCN 82 F/D/X/T MIRL

RWY 03: REIL. PAPI(P4L)—GA 3.3° TCH 60'.

RWY 21: REIL. PAPI(P4R)—GA 3.6° TCH 32'. Road.

RUNWAY DECLARED DISTANCE INFORMATION

RWY 03: TORA-6000 TODA-6000 ASDA-6000 LDA-6000

RWY 10L: TORA-9825 TODA-9825 ASDA-9825 LDA-8535

RWY 10R: TORA-11000 TODA-11000 ASDA-11000 LDA-11000

RWY 21: TORA-6000 TODA-6000 ASDA-6000 LDA-6000

RWY 28L: TORA-11000 TODA-11000 ASDA-11000 LDA-11000

RWY 28R: TORA-9825 TODA-9825 ASDA-9825 LDA-9290

ARRESTING GEAR/SYSTEM

RWY 10R TYPE-H BAK-12B(B) (1625').

TYPE-H BAK-12B(B) (2000'). **RWY 28L**

SERVICE: S4 FUEL 100LL, JET A OX 1, 2, 3, 4 LGT RWY 03 PAPI unusbl byd 4 deg left and rgt of RCL and byd 5 NM

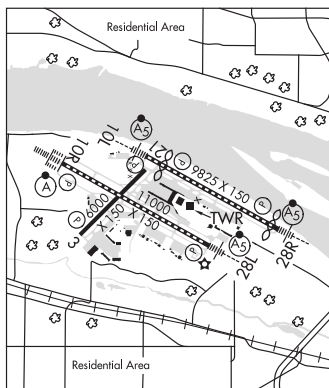
unusbl. **MILITARY—** JASU 4(A/M32A-86) (MC-11) 1(MA-1A) FUEL A (C503-331-4220). J8 (Mil) (NC-100LL, A) FLUID LHOXRB OIL O-128-133-148(Mil) **TRAN ALERT** No tran svc avbl.

AIRPORT REMARKS: Attended continuously. Arprt clsd to non-pwrd acft exc in emerg. Migratory and wintering flocks of large waterfowl on and invof arprt. Heavy seagull act Sep-Apr, exp high number of birds yr round, check lcl advisories. ASSC in use. Operate transponders with altitude reporting mode and ADS-B (if equipped) enabled on all airport surfaces. **RWY 28R** perimeter road at 200' from rwy thld and 408' rgt from rwy extdd cntrln. Unctd tfc at Pearson Field Vancouver WA, 3 NM west of Rwy 10L thld on extdd cntrln. Rwy 21 clsd to Height Group IV acft with cockpit to wheel hgt greater than 22'. **RWY 28R** 60' levee road lctd aprxly parallel to rwy at 200' fm thr and 507' rt fm rwy extndd cntrln. NS ABTMT procedures in effect call noise office, 503-460-4100. Rwy 28L arr are noise sensitive, exp apch to Rwy 28R with transition to Rwy 28L. Twy W clsd to acft with wingspan greater than 118'. Twy K to the North ramp clsd to through tfc. Twy A3 btn Twy A and the GA ramp clsd to acft with wingspan grt than 135 feet unless under tow. At the west end arm/dearm area on Twy C no acft of any type may taxi past the arm/dearm area while it is being used. Acft authorized to utilize the NW ramp will be towed to/from this ramp. Area of Twy T btn M and E3 not visible from twr. Twy T btn exits B5 and B6 clsd to acft with wingspan of 118' and greater. Twy C3 clsd to acft with a wingspan greater than 79'. Twy V clsd to acft with wingspan greater than 135'. Acft with wingspan greater than 118' prohibited from turning westbound onto Twy A from Twy V unless under tow. Acft with wingspan greater than 118' are prohibited from turning eastbound on Twy C from southwestbound on Twy F unless under tow. Twy E3 clsd to acft with wingspan greater than 198'. Twy T between Twy E3 and Twy B5 clsd to acft with wingspan greater than 198. Twy C between Twy C6 and Twy C8 clsd to acft with wingspan greater than 180'. 180° turns by acft weighing in excess of 12,500 lbs prohibited on Rwy 10L-28R, Rwy 03-21 and all twys. PDX has fac constraints that limit its ability to add accommodate diverted flts and maintain the arpt safe ops dur irregular ops. Acft oprs should ctc the on duty arprt ops supervisor for airspace at 503-460-4134 to coord diverted flts exc in the case of a declared in-flt emerg. Ldg fee. Coml acft and oprs of acft with an FAA certified max gross ldg wt that exceeds 10,000 lbs are rqr'd to pay a ldg fee. Possible Rwy 28L glideslope fluctuation prior to addum when weather is greater than 800/2. Flight Notification Service (ADCUS) avbl.

MILITARY REMARKS: ANG See FLIP AP/1 for Supplementary Arprt Information. Hazardous bird cond exist. Phase I May-Oct, Phase II Nov-Apr. Current bird watch cond are not reported on ATIS. PPR/Official Business Only. Base ops opr 1500-2300Z± Mon-Fri exc hol, DSN 638-4390, C503-335-4390. Ctc Base OPS 15 mins prior to ldg and after departing on 281.2. Tran quarters not avbl. CAUTION: Obst lgtg is not NVD compatible. NVD not authorized while airborne invof afld. NSTD yellow park spot designators and equipment tool box location painted on ramp. Please ctc base ops or req follow me if not familiar with Portland ANG base park procedures.

AIRPORT MANAGER: 503-415-6195

WEATHER DATA SOURCES: ASOS (503) 493-7687 WSP.



CONTINUED ON NEXT PAGE

CONTINUED FROM PRECEDING PAGE

COMMUNICATIONS: D-ATIS 128.35 269.9 (503) 493-7557 UNICOM 122.95
 Ⓡ APP/DEP CON 118.1 284.6 (100°-279° HIGH) 124.35 299.2 (280°-099°) 126.9 (APCH FINAL)
 TOWER 118.7 257.8 (Rwy 10L-28R) 123.775 251.125 (Rwy 03-21 and Rwy 10R-28L)
 GND CON 121.9 348.6 CLNC DEL 120.125 318.1
 AFR OPNS 138.45 252.8 ANG COMD POST 288.9 (Stump Town)
 ANG OPNS 280.5 PORTLAND GUARD OPS 281.2
 CPDLC (LOGON KUSA)

AIRSPACE: CLASS C svc ctc APP CON.

RADIO AIDS TO NAVIGATION: NOTAM FILE PDX.

BATTLE GROUND (H) VORTACW 116.6 BTG Chan 113 N45°44.87' W122°35.49' 160° 9.6 NM to fld. 253/21E.

TACAN AZIMUTH & DME unusable:

035°-085° byd 35 NM blo 10,000'

COLUMBIA (H) TACAN Chan 29 CBU (109.2) N45°35.32' W122°36.68' at fld. 22/20E.

TACAN unusable:

020°-030° byd 30 NM blo 9,500'

030°-050° byd 20 NM blo 9,500'

120°-130° byd 15 NM blo 8,500'

155°-250° byd 15 NM blo 10,500'

250°-270° byd 20 NM blo 8,500'

ILS/DME 111.3 I-VDG Chan 50 Rwy 10L. Class IT. DME also serves Rwy 28R.

ILS/DME 110.5 I-PDX Chan 42 Rwy 10R. Class IIIE. DME also serves Rwy 28L.

LOC/DME 108.9 I-GPO Chan 26 Rwy 21.

ILS/DME 110.5 I-JMJ Chan 42 Rwy 28L. Class IT. DME also serves Rwy 10R. Autocoupled apch not authorized blw 880' MSL (2.4NM from thld).

ILS/DME 111.3 I-IAP Chan 50 Rwy 28R. DME also serves Rwy 10L.

COMM/NAV/WEATHER REMARKS: PDX monitors 121.5 for McMinnville (MMV).

POTATO POINT N61°03.80' W146°42.12'
 RCO—122.4 (JUNEAU FSS)

ANCHORAGE
 L-1A, 3D, 4G

PRIIBLOF N56°34.31' W169°38.85' NOTAM FILE ENA.
 NDB/DME (HW) 399 SRI Chan 96 at St George. 95/7E.

DUTCH HARBOR
 H-2I, L-2I, 3B

DME unusable:

000°-090° byd 12 NM blo 18,000'

090°-180° byd 10 NM blo 8,000'

280°-300° byd 18 NM blo 8,000'

300°-000° byd 10 NM blo 3,000'

300°-000° byd 14 NM blo 18,000'

RCO 122.5 (KENAI RADIO)

PROSPECT CREEK (PPC)(PAPR) 3 NE UTC-9(-8DT) N66°48.84' W150°38.62'
 1095 B NOTAM FILE PPC

FAIRBANKS
 H-1B, L-4J

RWY 01-19: 4968X150 (GRVL) MIRL

RWY 01: REIL. PAPI(P2L)—GA 3.0° TCH 39'. Brush.

RWY 19: REIL. PAPI(P2L)—GA 3.0° TCH 40'.

AIRPORT REMARKS: Unattended. Arpt maintained by pvt company. All arpt lgtg privately owned and operated. Ltd snow removal. Arpt lgts opr 24 hrs. Recommend visual inspection prior to using. Rwy condition not monitored. Rotating bcn lctd on Alyeska flt advisory bldg is on only when the facility is manned at Prospect Creek.

AIRPORT MANAGER: (907) 787-8959

WEATHER DATA SOURCES: (TWEB BTT 116).

COMMUNICATIONS: CTAF 122.9

RADIO AIDS TO NAVIGATION: NOTAM FILE BTT.

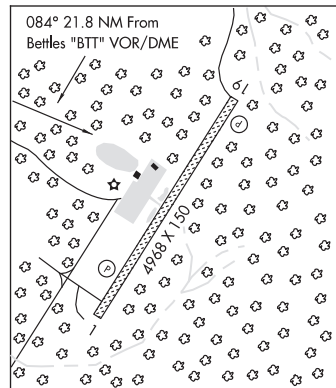
BETTLES (H) ABVORWDM 116.0 BTT Chan 107 N66°54.30' W151°32.15' 084° 21.8 NM to fld. 637/20E. TWEB.

VOR AZIMUTH & DME unusable:

047°-077° byd 24 NM

SDF/DME 110.7 I-ECD Chan 44 Rwy 01.

COMM/NAV/WEATHER REMARKS: For a toll free call to Fairbanks FSS dial 1-866-248-6516.



PROVIDENCE HOSPITAL HELIPORT (See ANCHORAGE on page 44)

PROVIDENCE SEWARD MEDICAL CENTER HELIPORT (See SEWARD on page 221)