

LADD AAF (FBK)(PAFB) A 2 E UTC-9(-8DT) N64°50.26' W147°36.87'

FAIRBANKS

449 B TPA—See Remarks NOTAM FILE PAFB

H-1B, L-3A, 3D, 4J

RWY 07-25: H8575X150 (ASPH-CONC) D-38 HIRL

DIAP

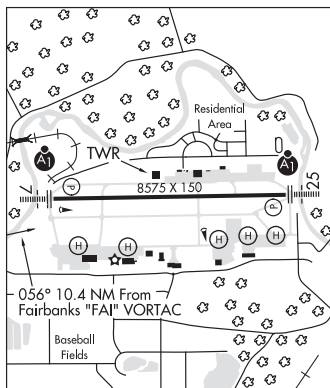
RWY 07: ALSF1. REIL. PAPI(P4L)—GA 3.0° TCH 67'. Trees road. Rgt tfc.

RWY 25: ALSF1. REIL. PAPI(P4L)—GA 3.3° TCH 67'. Trees/road.

SERVICE: LGT When twr clsd ACTV APL—CTAF. Rwy 07-25 apch lights NSTD. PAPI monthly maint last Wed of the month. PAPI will be unavailable for use during this time.

MILITARY REMARKS: Opr Mon-Fri 1700-0800Z. J4 fuel avbl. CTN: Lgtd hwy part to and N of Rwy 07-25 can be confused with rwy. Hvy bird act invof arpt. Edge lgts Twy H and ptns of Twy N and S greater than 10 ft fm twy side stripes. Be alert; nmrs night device acct ops invof Ladd AAF; exp nmrs dimly lit acct in Tannana Flats and Yukon trng areas durg hr of darkness and wkday Sep-Apr. Unlgted twr 150' AGL 1/2 NM North of arpt. CTN: 100 ft mkd lgt pole 3/4 NM SE. North tfc pat rotor wing and MQ-1 gray eagle only. Large acct ramp parking, small acct tie-down not avbl. De-ice svcs not avbl. TPA R/W 1200 ft, F/W Piston 1500 ft, F/W Turbine 2000 ft. Firing ranges S of fld ctc ATCT or ops for adzy. Range Control freq 38.30. Med evac pad for F/W at ops ramp, R/W evac pad at hospital, 15 min notice rqrd. 24 hr PPR for tsnt-D317-353-7212/6514/C907-353-7212/6514. Rwy

07-25 no ovms. Twys A, B, C, D, E, F, G sections of N and S do not have shoulders. Rwy 07-25 seasonal climatic cond effects weight brg capacity. All heli day VMC only. Special VFR minimum Day—R/W 300-1/2, F/W 500-1. Night—R/W 500-1, F/W N/A. Communications: Weather (PMSV) metro 381.375, 142.1, 134.25 ATIS; Wx ops H24-D317-353-7111/C907-353-7111. GCA 121.3, 118.05, 276.4 (Mon-Fri 1700-0100Z exc hol). PCN (Jun-Feb) 130/F/A/W/T. PCN (Mar-May) 112/F/D/W/T. US customs and intl trash not avbl. Rapid hot refueling points ops clsd Sat, Sun, hol; otr times by NOTAM. Avn units ctc their for cold fuel. CAUTION: Towers located in Alpha sod center are inop and unlit obst lights. Rwy 07 clear zone railroad train movement activity. When open, ATCT will advise acct that they are not auth to depart or land until train movements have completed. Rwy 07 15 ft road 387 ft E of DER. Road 349 ft fm DER runs thru clear zone perpendicular to extdd cntrln; railroad tracks 556 ft fm of DER runs thru clear zone perpendicular to cntrln; river 556 ft fm DER runs thru clear zone perpendicular to extdd cntrln. Rwy 25 15 ft road 349 ft W of DER; 23 ft railroad tracks 556 ft W of DER; 25 ft trees 556 ft W of DER. Road 387 ft fm DER runs thru clear zone perpendicular to extdd cntrln; river 477 ft fm DER runs thru clear zone perpendicular to extdd cntrln. Road tfc is ctld by ATCT when opn.



AIRPORT MANAGER: 907-353-7022

COMMUNICATIONS: CTAF 125.0 ATIS 134.25 907-353-5233 (TIE-IN FSS FAIRBANKS FAI-DL-NOTAM PAFB)

FAIRBANKS RADIO 122.2 (E) 122.6 255.4

① **FAIRBANKS APP CON** 125.35 363.2 (180°-359°) 127.1 251.1 (360°-179°) (E)

TOWER 40.80 FM 125.0 (E) 284.6 Class D svc (1700-0800Z Mon-Fri exc hols; otr times by NOTAM; otr times Class G) **GND CON** 121.7 263.15

① **FAIRBANKS DEP CON** 125.35 363.2 327.1

BASE OPS 139.3 (Mon-Fri 1700-0200Z)

PMSV METRO 142.1381.375 (Mon-Fri 1600-0830Z, exc hol)

AIRSPACE: CLASS D svc 1700-0800Z Mon-Fri exc hols; otr times by NOTAM; otr times CLASS G..

RADIO AIDS TO NAVIGATION: NOTAM FILE FAI.

FAIRBANKS (H) (H) VORTACW 108.6 FAI Chan 23 N64°48.00' W148°00.72' 056° 10.4 NM to fld. 1526/21E.

TACAN AZIMUTH unusable:

065°-100° byd 30 NM

270°-330° byd 10 NM blo 10,000'

270°-330° byd 30 NM

CHENA NDB (HW) 257 CUN N64°50.32' W147°29.70' 252° 3.1 NM to fld. 462/17E.

COMM/NAV/WEATHER REMARKS: ASOS 119.275 is assoc with R-2205 Yukon Training Range. ASOS freq 118.525 is assoc with R-2211 Blair Lake Training Range. PMSV lmted to line of sight; reception blw 5,000 ft MSL lmted fm 210°-100° wi 100 NM by trrn, no lmt abv 5,000 ft wi 50 NM; reception 3,500-12,000 ft lmted fm 100°-210° fm 50-100 NM by trrn, no lmt abv 12,000 ft wi 100 NM. PMSV unmonitored when FBK twr clsd. Sfc vis restricted fm 020°-050° due to Hangar 1 and fm 250°-350° due to ctl twr and bldgs. Durg wx station evac (907) 382-6518. Mins based on FBK wx obs.

HELIPAD H1: H50X50 (ASPH-CONC)

HELIPAD H4: H50X50 (ASPH-CONC)

HELIPAD H5: H50X50 (ASPH-CONC)

HELIPAD H6: H50X50 (ASPH-CONC)

HELIPAD H7: H50X50 (ASPH-CONC)

HELIPORT REMARKS: H1 designated; Helipad S.

LAKE BROOKS SPB (See KATMAI NATIONAL PARK on page 140)