

**KIVALINA** (KVL)(PAVL) 0 NW UTC-9(-8DT) N67°44.17' W164°33.81'  
18 B NOTAM FILE KVL  
RWY 12-30: 3000X60 (GRVL) MIRL

**SERVICE:** LGT ACTIVATE MIRL Rwy 12-30 and rotating bcn—122.8.

**AIRPORT REMARKS:** Unattended. Rwy condition not monitored, recommend visual inspection prior to landing. Be alert Rwy 12-30 has numerous soft spots May thru Oct. Approach to Rwy 30 over town. Birds invof dump on apch to Rwy 12. Cold temperature restricted airport. Altitude correction required at or below -34C. Acft parking apron located 1500' S of Rwy 30 thld, old rwy used as twy to parking apron. Rwy 12-30 marked with reflective cones.

**AIRPORT MANAGER:** 907-442-3147

**WEATHER DATA SOURCES:** ASOS 135.8 (907) 645-2160. (WX CAM)

**COMMUNICATIONS:** CTAF/UNICOM 122.8

KIVALINA RCO 122.55 (KOTZEBUE RADIO) (1600-0900Z±) other times ctc Fairbanks FSS.

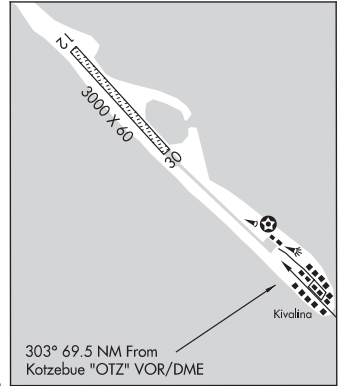
ANCHORAGE CENTER APP/DEP CON 119.2 263.0

**RADIO AIDS TO NAVIGATION:** NOTAM FILE OTZ.

**KOTZEBUE (H) VOR/DME** 115.7 OTZ Chan 104 N66°53.14'  
W162°32.40' 303° 69.5 NM to fld. 121/15E.

**COMM/NAV/WEATHER REMARKS:** For LC to Kotzebue FSS dial 907-442-3310. For a toll free call to Kotzebue FSS dial 1-800-478-7460. For a toll free call to Fairbanks FSS dial 1-866-248-6516.

NOTE  
L-4H  
IAP



## KLAWOCK

**KLAWOCK** (AKW)(PAKW) 2 NE UTC-9(-8DT) N55°34.75' W133°04.56'  
80 B NOTAM FILE AKW

RWY 02-20: H5000X100 (ASPH-GRVD) D-100 MIRL 0.8% up NE

RWY 02: REIL. PAPI(P4L)—GA 3.0° TCH 34'. Brush.

RWY 20: REIL. PAPI(P4L)—GA 4.0° TCH 40'. Brush. Rgt tfc.

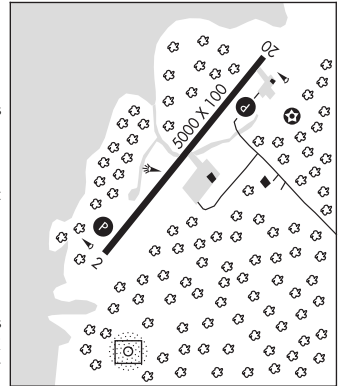
**SERVICE:** LGT ACTIVATE MIRL Rwy 02-20, PAPI Rwy 02 and 20, windsock and apron lgts—122.25. ACTIVATE rotating bcn—120.900. Rwy 20 PAPI 3° left of rwy centerline unusable.

**AIRPORT REMARKS:** Unattended. Be alert downdraft and turbulent conditions vicinity touchdown zone Rwy 02 due to terrain and trees east of approach end of rwy. High terrain all quadrants. Recommend daylight ops only. Irregular wind conditions. Be alert: High level of bird activity at different times of the year. All bird activity should be reported to arpt manager or FSS. Birds, deer and bear on and invof arpt. Arpt CLOSED to acft over 12,500 lbs GWT, except PPR from arpt mgr 907-755-2229. Arpt condition not monitored, arpt maintenance on irregular basis, recommend visual inspection prior to using. Parachute jumping onto arpt rwy, twy and acft parking apron prohibited. CLOSED to air carrier ops with more than 30 passenger seats. Rwy 02-20 slopes down 55'-65' from each end to center. Rwy 20 700' hill 2 miles NE of AER 20. Cold temperature airport. Altitude correction required at or below -10C.

**AIRPORT MANAGER:** 907-755-2229

**WEATHER DATA SOURCES:** ASOS 135.45 (907) 755-2641. (WX CAM)

KETCHIKAN  
H-1D, L-1C  
IAP



CONTINUED ON NEXT PAGE

## CONTINUED FROM PRECEDING PAGE

COMMUNICATIONS: CTAF 120.9

RCO 122.25 (KETCHIKAN RADIO)

ANCHORAGE CENTER APP/DEP CON 118.5

RADIO AIDS TO NAVIGATION: NOTAM FILE SIT.

LEVEL ISLAND (H) VOR/DME 116.5 LVD Chan 112 N56°28.06' W133°04.99' 160° 53.4 NM to fld. 98/20E.

VOR unusable:

038°-098° byd 35 NM blo 9,000'

098°-138° byd 25 NM blo 7,000'

168°-208° byd 35 NM blo 6,000'

268°-328° byd 25 NM blo 9,000'

328°-358° byd 30 NM blo 7,000'

328°-358° byd 35 NM blo 8,000'

358°-038° byd 35 NM blo 12,000'

wx cam

DME unusable:

038°-098° byd 35 NM blo 9,000'

098°-138° byd 25 NM blo 7,000'

168°-208° byd 35 NM blo 6,000'

268°-328° byd 25 NM blo 9,000'

328°-358° byd 30 NM blo 7,000'

328°-358° byd 35 NM blo 8,000'

358°-038° byd 35 NM blo 12,000'

NDB/DME (HW) 229 AKW Chan 105 N55°34.12' W133°04.88' at fld. 30/20E. NOTAM FILE AKW.

NDB/DME unusable:

034°-189° blo 8,000'

304°-354° blo 8,000'

COMM/NAV/WEATHER REMARKS: For a toll free call to Ketchikan FSS dial 800-478-3500. For a LC to Juneau FSS dial 789-7380.

KLAWOCK SPB (AQC)(PAQC) 0 W UTC-9(-8DT) N55°33.28' W133°06.10'

KETCHIKAN

00 NOTAM FILE AKW

WATERWAY NW-SE: 5000X1000 (WATER)

SEAPLANE REMARKS: Attended daylight hrs. Protected narrow channel between village and Klawak Island, reefs in channel. No SPB float exists in Klawock. SW winds result in heavy seas outside protected channel.

COMMUNICATIONS: CTAF 120.9

RADIO AIDS TO NAVIGATION: NOTAM FILE SIT.

LEVEL ISLAND (H) VOR/DME 116.5 LVD Chan 112 N56°28.06'

W133°04.99' 161° 54.9 NM to fld. 98/20E.

VOR unusable:

038°-098° byd 35 NM blo 9,000'

098°-138° byd 25 NM blo 7,000'

168°-208° byd 35 NM blo 6,000'

268°-328° byd 25 NM blo 9,000'

328°-358° byd 30 NM blo 7,000'

328°-358° byd 35 NM blo 8,000'

358°-038° byd 35 NM blo 12,000'

wx cam

DME unusable:

038°-098° byd 35 NM blo 9,000'

098°-138° byd 25 NM blo 7,000'

168°-208° byd 35 NM blo 6,000'

268°-328° byd 25 NM blo 9,000'

328°-358° byd 30 NM blo 7,000'

328°-358° byd 35 NM blo 8,000'

358°-038° byd 35 NM blo 12,000'

COMM/NAV/WEATHER REMARKS: For a toll free call to Ketchikan FSS dial 800-478-3500. For a LC to Juneau FSS dial 789-7380.

