

## KODIAK

**KODIAK** (ADQ)(PADQ) P (CG) 4 SW UTC-9(-8DT) N57°44.99' W152°29.64'

79 B ARFF Index—See Remarks NOTAM FILE ADQ

**RWY 08-26:** H7534X150 (ASPH-GRVD) S-53, D-110, 2D-150

PCN 70 F/B/Y/T HIRL 0.8% up W

**RWY 08:** Thld displcd 1138'. Hill.

**RWY 26:** REIL. VASI(V2L)—GA 2.05° TCH 54'. Rgt tfc.

**RWY 11-29:** H5400X150 (ASPH-GRVD) S-53, D-110, 2D-150

PCN 44 F/B/Y/T HIRL

**RWY 11:** Thld displcd 440'. Trees.

**RWY 29:** VASI(V2L). Thld displcd 556'. Rgt tfc.

**RWY 01-19:** H5010X150 (ASPH-GRVD) S-53, D-110, 2D-150

PCN 48 F/B/X/U HIRL 0.3% up S

**RWY 01:** REIL. VASI(V2L)—GA 3.75° TCH 57'. Trees. Rgt tfc.

#### RUNWAY DECLARED DISTANCE INFORMATION

**RWY 08:** TORA-7534 TODA-7534 ASDA-7534 LDA-6396

**RWY 11:** TORA-4960 TODA-4960 ASDA-4960 LDA-4402

**RWY 26:** TORA-7534 TODA-7534 ASDA-7534 LDA-7534

**RWY 29:** TORA-4844 TODA-4844 ASDA-4844 LDA-4402

#### ARRESTING GEAR/SYSTEM

**RWY 01:** EMAS

**RWY 08:** EMAS

**SERVICE:** S2 FUEL 100LL, JET A1 LGT ACTVT REIL Rwy 01 and 26;

VASI Rwy 01, 26, 29; HIRL Rwy 01-19, 08-26, 11-29; twy lgts—CTAF. Rwy 01 REIL are omnidirectional to accommodate circling apchs. Rwy 01 VASI does not provide obst clearance beyond 2.0 NM from thld, unusable beyond 2.0 NM.

**AIRPORT REMARKS:** Attended same as arpt maint hrs. For info on arpt call 907-487-4952 Mon-Fri 1600-0130Z†. TSA regulated airport. See 49 CFR 1542. All gates and doors must be secured at all times. Transient or unfamiliar pilots contact airport mgr with questions. JASU fuel avbl for USCG only. Class I, ARFF Index B. CLOSED to air carrier ops with more than 30 pax seats exc PPR in writing to arpt mgr, P.O. Box 1500 Anton Larson Road, Kodiak, AK 99615. Personnel and eqpt may be working on the rwy at any time. No snow removal or deicing for rwy, twy, and ramp, daily 1830-0500 local. Deer, numerous seabirds and migratory waterfowl on and invof arpt. First 3000' Rwy 08 and first 2000' Rwy 01, and associated twys not visible from twr. Portions of all twys not visible from tower due to terrain. fld surrounded by mountains exc east. High terrain around arpt is not obst lgtd. Mountain on apch to Rwy 08. Recommend use of Rwy 08 only by pilots familiar with terrain. Maneuvering for apch to Rwy 01, Rwy 26, Rwy 29, or Rwy 19, must be accomplished east of fld. Takeoff Rwy 26 or Rwy 29 or Indg Rwy 08 or Rwy 11 not recommended drg hrs of darkness or when mtn peaks are obscd. Pilots are cautioned to thoroughly understand standard instrument apch, and missing apch procedures. Acft ops during ATCT closure: All pilots must be alert when landing Rwy 26 or departing Rwy 08 due to possible tall vessels crossing the Rwy 26 apch corridor 3200' to 5000' from apch end of Rwy 26. Ships over 120' above water cross channel btwn Puffin Island/ADQ. Can occur anytime. Arpt svc road within 50 ft of thld on all rwys. Clsd to Part 121 unscheduled pax carrying ops with over 30 pax seats installed unless 24 hr written notice to arpt mgr and prior apvl received. All tran mil acft contact maintenance on 164.55 or Kodiak Air on 345.0 for Marshall. 72 hour advance PPR required for access to CG ramp. Transient crew must provide technical/direct/assistance in svc/maint. Expect delays other times except SAR and Medevac V487-5889 C907-487-5889. All arr acft ctc Kodiak Air on 345.0 or 164.55 for clearance onto CG ramp, Marshall and parking svcs. BE ALERT: Twy to CG ramp crosses two roadways, activate crossing lights key 122.8 5 times on, 7 times off. BE ALERT: Non-standard taxi line obst clearance on CG ramp. All Lifelight/Medvac acft must use ramp area in or adjacent to transient parking on east side of commercial ramp, outside of SIDA markings. CG ramp unsuitable for acft larger than a C130 wingspan (132.5'). Arpt sand larger gradation than FAA recommended/see AC150/5200-30. Heavy lift cargo acft restricted from full power takeoff on Rwy 08 unless prior authorization from arpt mgmt. Locked wheel turns prohibited on all sfcs. NWS weather balloon launch facility located on arpt, see inside back cover for opn details. Acft weighing more than 200,000 gross takeoff and landing, PPR for all operations.

**AIRPORT MANAGER:** 907-487-4952

**WEATHER DATA SOURCES:** ASOS (907) 487-2442 (WX CAM)

**COMMUNICATIONS:** CTAF 119.8 UNICOM 122.8 ATIS 134.45

RCO 119.8 (KENAI FSS)

WOODY ISLAND RCO 122.2 (KENAI FSS)

ANCHORAGE CENTER APP/DEP CON 281.4 125.1

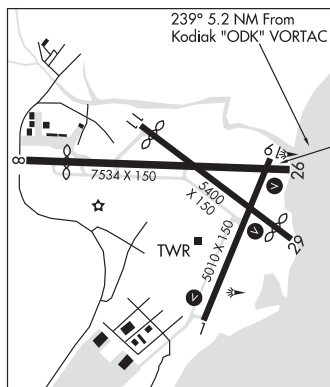
TOWER 239.0 119.8 (Oct 1-Mar 31 1530-0500Z†, Apr 1-Sep 30 1600-0700Z†.) GND CON 121.9

COAST GUARD AIR OPERATIONS (KODIAK AIR) 345.0 156.8 2182 2678

**KODIAK**

H-1B, 2K, L-21, 3D

IAP, AD



CONTINUED ON NEXT PAGE

## CONTINUED FROM PRECEDING PAGE

**AIRSPACE: CLASS D** svc 1530-0500Z† 1 Oct-31 Mar, 1600-0700Z† 1 Apr-30 Sep; other times CLASS E.

**RADIO AIDS TO NAVIGATION:** NOTAM FILE ADQ.

(H) (H) **VORW/DME** 117.1 ODK Chan 118 N57°46.50' W152°20.39' 239° 5.2 NM to fld. 133/14E.

VOR unusable:

190°-310° byd 15 NM blo 12,000'

DME unusable:

154°-265° byd 15 NM blo 12,000'

266°-305°

306°-341° byd 15 NM blo 12,000'

**WOODY ISLAND NDB (HW)** 394 RWO N57°46.49' W152°19.48' 241° 5.6 NM to fld. 24/14E.

**ILS/DME** 110.9 I-ADQ Chan 46 Rwy 26. Class IA. Front unusable within 2.0 DME (0.7 NM from thld). LOC unusable byd 30° r of course.

**COMM/NAV/WEATHER REMARKS:** For a toll free call to Kenai FSS dial 1-866-864-1737. RCO available when twr closed.

**KODIAK (LILLY LAKE) SPB** (9Z3) 1 NE UTC-9(-8DT) N57°48.16' W152°22.96'

**KODIAK**

130 LRA NOTAM FILE ENA

**WATERWAY NE-SW:** 2100X250 (WATER)

**WATERWAY NE:** Rgt tfc.

**SEAPLANE REMARKS:** Unattended. Arpt clsd at ngt. Arpt CLOSED

High/Low wing except 49' and under. Ctc Kodiak Twr 119.8.

Windssock located at Kodiak Muni Arpt. Numerous unlit obstructions in vicinity. Be alert possible conflicting traffic with NE operations and lake based acft. Land around lake is private property. All docks and ramps are privately owned.

**AIRPORT MANAGER:** 907-486-8060

**COMMUNICATIONS:** CTAF 119.8 UNICOM 122.8

**RADIO AIDS TO NAVIGATION:** NOTAM FILE ADQ.

(H) (H) **VORW/DME** 117.1 ODK Chan 118 N57°46.50'

W152°20.39' 306° 2.2 NM to fld. 133/14E.

VOR unusable:

190°-310° byd 15 NM blo 12,000'

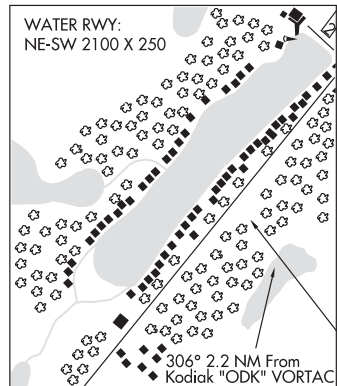
DME unusable:

154°-265° byd 15 NM blo 12,000'

266°-305°

306°-341° byd 15 NM blo 12,000'

**COMM/NAV/WEATHER REMARKS:** For toll free call to Kenai FSS dial 1-866-864-1737.



**KODIAK MUNI** (KDK)(PAKD) 2 NE UTC-9(-8DT) N57°48.36' W152°22.43'

**KODIAK**

139 NOTAM FILE ENA

**RWY 02-20:** H2475X40 (ASPH-TRTD)

**RWY 02:** Thld dsplcd 240'. Tree. Rgt tfc.

**RWY 20:** Trees.

**AIRPORT REMARKS:** Attended daylight hrs. Arpt unlit and CLOSED for ngt ops.

Ctc Kodiak twr for tfc advisory, 119.8. Arpt CLOSED High/Low wing except 49' under. Numerous unlit obstructions in vicinity. Conflicting traffic with Lilly Lake Trident Basin and Kodiak Arpt. Rwy 02-20 surrounded by numerous businesses in close proximity. Rwy 02-20 pavement width varies from 20' wide on Rwy 20 end to 30' wide on Rwy 02 end. Pavement is cracked length of rwy. Rwy 20 road crosses apch 15' blo thld elev 200' from rwy thld. Rwy slopes uphill 67' from Rwy 02 dsplcd thld to Rwy 20. Rwy 02-20 NSTD markings faded to invisible, no line of sight between rwy ends. First 350' of Rwy 02 slopes 5% uphill.

**AIRPORT MANAGER:** 907-486-8060

**COMMUNICATIONS:** CTAF 119.8 UNICOM 122.8

**RADIO AIDS TO NAVIGATION:** NOTAM FILE ADQ.

(H) (H) **VORW/DME** 117.1 ODK Chan 118 N57°46.50'

W152°20.39' 316° 2.2 NM to fld. 133/14E.

VOR unusable:

190°-310° byd 15 NM blo 12,000'

DME unusable:

154°-265° byd 15 NM blo 12,000'

266°-305°

306°-341° byd 15 NM blo 12,000'

**COMM/NAV/WEATHER REMARKS:** For a toll free call to Kenai FSS dial 1-866-864-1737.

