

CONTINUED FROM PRECEDING PAGE

RADIO AIDS TO NAVIGATION: NOTAM FILE AKN.

(H) VORTACW 112.8 AKN Chan 75 N58°43.48' W156°45.14' 116° 4.4 NM to fld. 95/16E.

TACAN antenna offset 150' se

TACAN AZIMUTH unusable:

130°-140° byd 13 NM blo 4,000'

130°-140° byd 30 NM

338°-348° byd 19 NM blo 5,000'

DME unusable:

338°-348° byd 19 NM blo 5,000'

CHINOOK NDB (HW/LOM) 355 AUB N58°44.23' W156°46.70' 116° 5.5 NM to fld. 66/16E.

ILS/DME 110.3 I-AKN Chan 40 Rwy 12. LOM CHINOOK NDB. Glideslope autopilot coupled approach not authorized below 700' MSL. ILS glideslope not coincident with PAPI. (radar monitoring not avbl for ILS GS). Localizer backcourse unusable byd 20° right of course.

COMM/NAV/WEATHER REMARKS: For a toll free call to Kenai FSS dial 1-866-864-1737. CTAF frequency 121.9 simulcast with 352.05. Freq 118.3 unavbl when twr clsd.

WATERWAY NW-SE: 4000X500 (WATER)

SEAPLANE REMARKS: Attended Mon-Fri 1700-0100Z±. Deployed/transient Air Defense Alert FTRS may scramble at any time. Flocks of large migratory birds in vicinity during season. Landing area Rwy NW-SE also used by boats. 100LL and Jet A avbl at seaplane base fr fuel truck or UNICOM 122.95.

KIPNUK (IIK)(PAKI) 0 SE UTC-9(-8DT) N59°55.90' W164°01.69'

20 NOTAM FILE IIK

RWY 17-35: 3200X60 (GRVL) MIRL

RWY 35: Rgt tfc.

SERVICE: LGT ACTIVATE MIRL RWY 17-35-CTAF. Emergency rwy lgts: contact Kipnuk Village Council at 907-896-5515.

AIRPORT REMARKS: Unattended. Rwy condition not monitored, recommend visual inspection prior to using. Frequent crosswinds. Windsock unreliable. Heavy bird activity near rwy. Irregular surfaces full length of rwy. Dips and ponding full length of twy. Wind turbine farm 0.5 NM NW of arpt unlighted.

AIRPORT MANAGER: 907-543-2495

WEATHER DATA SOURCES: AWOS-3P 118.325 (907) 896-5510.

COMMUNICATIONS: CTAF 122.7

RCO 122.6 (KENAI RADIO)

ANCHORAGE CENTER APP/DEP CON 125.2

RADIO AIDS TO NAVIGATION: NOTAM FILE BET.

BETHEL (H) VORTACW 114.1 BET Chan 88 N60°47.09'

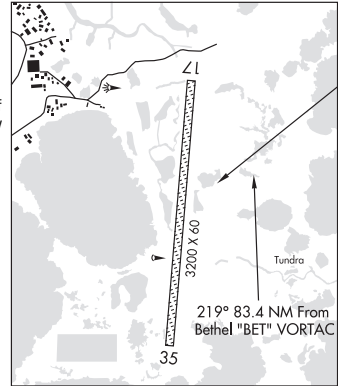
W161°49.46' 219° 83.4 NM to fld. 105/14E.

COMM/NAV/WEATHER REMARKS: For a toll free call to Kenai FSS dial 1-866-864-1737.

BETHEL

L-3B

IAP



KITOI BAY SPB (KKB) 0 NE UTC-9(-8DT) N58°11.46' W152°22.23'

00 NOTAM FILE ADQ

WATERWAY E-W: 4000X1000 (WATER)

AIRPORT REMARKS: Unattended. E-W prevailing winds. Gravel beaching area next to dock with rocks up to 12". Heavy bird act invof ldg area. Ctc mgr alternate number: 907-486-6555.

AIRPORT MANAGER: 877-628-4449

COMMUNICATIONS: CTAF 122.8

RADIO AIDS TO NAVIGATION: NOTAM FILE ADQ.

WOODY ISLAND NDB (HW) 394 RWO N57°46.49' W152°19.48' 343° 25.1 NM to fld. 24/14E.

KODIAK