

KING SALMON (AKN)(PAKN) P (AF) O SE UTC-9(-8DT) N58°40.59' W156°38.92'

KODIAK

73 B ARFF Index—See Remarks NOTAM FILE AKN

H-1B, 21, L-21, 3C

RWY 12-30: H8901X150 (ASPH-GRVD) S-67, D-90, 2S-175,

2D-175, 2D/2D2-335 PCN 67 F/B/X/T HIRL

RWY 12: SSALR. PAPI(P4L)—GA 3.0° TCH 66'. RVR-T

RWY 30: PAPI(P4L)—GA 3.0° TCH 45'. RVR-R

RWY 18-36: H4017X100 (ASPH-GRVD) S-30, D-50 PCN 66 F/B/X/T MIRL

RWY 18: Trees.

RUNWAY DECLARED DISTANCE INFORMATION

RWY 12: TORA-8901 TODA-8901 ASDA-8501 LDA-8501

RWY 30: TORA-8901 TODA-8901 ASDA-8501 LDA-8501

SERVICE: S4 FUEL 100LL, JET A LGT When twr clsd ACTIVATE SSLAR

Rwy 12, PAPI Rwy 12 and Rwy 30, MIRL Rwy 18-36, HIRL Rwy 12-30—CTAF.

AIRPORT REMARKS: Attended 1700-0300Z. Cold temperature restricted airport. Altitude correction required at or below -31C. TSA regulated arpt. See 49 CFR 1542. All gates and doors must be secured at all times. Transient or unfamiliar pilots contact arpt mgr with questions. Class I, ARFF Index B. CLOSED to air carrier ops with more than 30 pax seats exc PPR in writing to arpt mgr Post Office Box 65, King Salmon, AK 99613. ARFF equip staffed during periods of air carrier activity only. ARFF is avbl for part 121 carriers involved in ETOPS operations with 30 min notice. General aviation apron pavement crumbling, possible foreign object damage hazard. Jet acft be alert during run-up to avoid damage with jet wash. Arpt hazard reporting only performed for 30 pax seat acft. Snow, ice removal and hazard condition performed and reported during maintenance duty hrs. 1° dip on centerline 1850' from AER 36 extends to 3° dip 25' on west edge. 600' safety area AER 12. Flocks of large migratory birds in vicinity during season. Locked wheel turns prohibited on any sfc. Off pavement ops by acft, including helicopters, not authorized at the air carrier apron. No ldg, parking or tkfs permitted from dirt or grass. Apron spots 4, 5, 6 and 7 north of mil hangars clsd exc prop acft. Twy P clsd. Civ tran parking on SE ramp only, other parking longer than 48 hrs rqrs permit. Pvt jets may park on the SE section of the East ramp, call arpt mgr at 907-246-3325 for info. No cstmns avbl. USAF facilities minimally opr by civ contractors with ltd support capability. Call to confirm opr hrs not later than 24 hrs in advance of expected arrival. Mil aircraft need to confirm fuel req 24-48 hrs in advance. Rwy 18-36 not inspected for mil ops. Mil ftrs/emergency diverts call Warrior SOF/Elmendorf SOF on UHF 395.15. Non-emergency/non-ftr acft call King Salmon Ops 24 hr point normally monitors CTAF during opr hrs. All fighter acft exp reduced separation, similar apch characteristics and day -3000', dissimilar apch characteristics and/or ngt -6000', ahead/behind formation ldg -6000'. Rwy 12 touchdown RVR avbl Aug 1-Jun 14 1700-0500Z. 15 Jun-31 Jul 1700-0700Z. RCR updated as rqrd during 11th AF ftr flying window. Aircrews coord RCR checks with King Salmon Ops 907-439-3001 or 907-439-6000. Acft ops rstd to low apch apch/full stop ldg only. Flgts originating outside Alaska refer to the U.S. Air force-Foreign Clearance Guide. NWS weather balloon launch facility located on arpt, see inside back cover for opn details.

AIRPORT MANAGER: 907-246-3325

WEATHER DATA SOURCES: ASOS 128.8 (907) 246-7506. (WX CAM)

COMMUNICATIONS: CTAF 352.05 121.9 UNICOM 122.95 ATIS 128.8

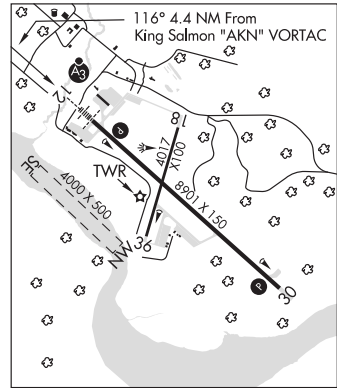
RCO 255.4 122.2 121.9 Freq 121.9 avbl when twr clsd. (KENAI FSS)

ANCHORAGE CENTER APP/DEP CON 354.0 124.8

TOWER 279.5 118.3 (1 Aug-14 Jun 1700-0500Z, 15 Jun-31 Jul 1700-0700Z. **GND CON** 121.9

PTD 372.2

AIRSPACE: CLASS D svc 1700-0500Z Aug 1-Jun 14, 1700-0700Z Jun 15-Jul 31; other times CLASS E.



CONTINUED ON NEXT PAGE

CONTINUED FROM PRECEDING PAGE

RADIO AIDS TO NAVIGATION: NOTAM FILE AKN.(H) **VORTACW** 112.8 AKN Chan 75 N58°43.48' W156°45.14' 116° 4.4 NM to fld. 95/16E.

TACAN antenna offset 150' se

TACAN AZIMUTH unusable:

130°-140° byd 13 NM blo 4,000'

130°-140° byd 30 NM

338°-348° byd 19 NM blo 5,000'

DME unusable:

338°-348° byd 19 NM blo 5,000'

CHINOOK NDB (HW/LOM) 355 AUB N58°44.23' W156°46.70' 116° 5.5 NM to fld. 66/16E.**ILS/DME** 110.3 I-AKN Chan 40 Rwy 12. LOM CHINOOK NDB. Glideslope autopilot coupled approach not authorized below 700' MSL. ILS glideslope not coincident with PAPI. (radar monitoring not avbl for ILS GS). Localizer backcourse unusable byd 20° right of course.**COMM/NAV/WEATHER REMARKS:** For a toll free call to Kenai FSS dial 1-866-864-1737. CTAF frequency 121.9 simulcast with 352.05. Freq 118.3 unavbl when twr clsd.**WATERWAY NW-SE:** 4000X500 (WATER)**SEAPLANE REMARKS:** Attended Mon-Fri 1700-0100Z±. Deployed/transient Air Defense Alert FTRS may scramble at any time. Flocks of large migratory birds in vicinity during season. Landing area Rwy NW-SE also used by boats. 100LL and Jet A avbl at seaplane base fr fuel truck or UNICOM 122.95.**KIPNUK** (IIK)(PAKI) 0 SE UTC-9(-8DT) N59°55.90' W164°01.69'

20 NOTAM FILE IIK

RWY 17-35: 3200X60 (GRVL) MIRL**RWY 35:** Rgt tfc.**SERVICE:** LGT ACTIVATE MIRL RWY 17-35—CTAF. Emergency rwy lgts. contact Kipnuk Village Council at 907-896-5515.**AIRPORT REMARKS:** Unattended. Rwy condition not monitored, recommend visual inspection prior to using. Frequent crosswinds. Windssock unreliable. Heavy bird activity near rwy. Irregular surfaces full length of rwy. Dips and ponding full length of twy. Wind turbine farm 0.5 NM NW of arpt unlighted.**AIRPORT MANAGER:** 907-543-2495**WEATHER DATA SOURCES:** AWOS-3P 118.325 (907) 896-5510.**COMMUNICATIONS:** CTAF 122.7

RCO 122.6 (KENAI RADIO)

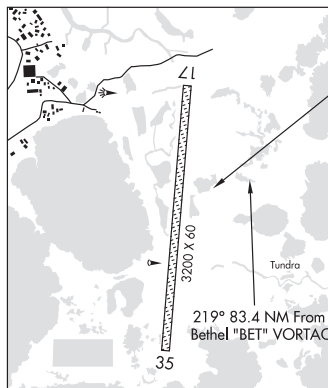
ANCHORAGE CENTER APP/DEP CON 125.2**RADIO AIDS TO NAVIGATION:** NOTAM FILE BET.**BETHEL (H) VORTACW** 114.1 BET Chan 88 N60°47.09'

W161°49.46' 219° 83.4 NM to fld. 105/14E.

COMM/NAV/WEATHER REMARKS: For a toll free call to Kenai FSS dial 1-866-864-1737.**BETHEL**

L-3B

IAP

**KITOI BAY SPB** (KKB) 0 NE UTC-9(-8DT) N58°11.46' W152°22.23'

00 NOTAM FILE ADQ

WATERWAY E-W: 4000X1000 (WATER)**AIRPORT REMARKS:** Unattended. E-W prevailing winds. Gravel beaching area next to dock with rocks up to 12". Heavy bird act invof ldg area. Ctc mgr alternate number: 907-486-6555.**AIRPORT MANAGER:** 877-628-4449**COMMUNICATIONS:** CTAF 122.8**RADIO AIDS TO NAVIGATION:** NOTAM FILE ADQ.**WOODY ISLAND NDB (HW)** 394 RWO N57°46.49' W152°19.48' 343° 25.1 NM to fld. 24/14E.**KODIAK**