

KENAI MUNI (ENA)(PAEN) 0 N UTC-9(-8DT) N60°34.40' W151°14.69'
100 B Class I, ARFF Index A NOTAM FILE ENA

ANCHORAGE
H-1B, 2K, L-1A, 3D, 4F
IAP, DIAP, AD

RWY 02L-20R: H7855X150 (ASPH-GRVD) S-75, D-150, 2D-250
PCR 461 F/B/X/U. HIRL
RWY 02L: REIL. VASI(V4L)—GA 3.0° TCH 53'. RVR-R Thld dsplcd 280'. Rgt tfc.
RWY 20R: MALSR. VASI(V4L)—GA 3.0° TCH 51'. RVR-T
RWY 02R-20L: 1980X75 (GRVL)

RUNWAY DECLARED DISTANCE INFORMATION

RWY 02L:TORA-7855 TODA-7855 ASDA-7855 LDA-7575
RWY 20R:TORA-7855 TODA-7855 ASDA-7575 LDA-7575

SERVICE: S2 **FUEL** 100LL, JET A **LGT** ACTVT REIL Rwy 02L; VASI Rwy 02L & 20R—CTAF. When twr clsd ACTVT and incr instst HIRL Rwy 02L-20R—Kenai FSS. When twr clsd ACTVT MALSR Rwy 20R—CTAF.

NOISE: Rwy 02W arr and Rwy 20W make dep fnl apch and cross wind turns S of beachline unless auth by ATC. Water ldg area and twy chnl not vsb fm twr.

AIRPORT REMARKS: Attended Mon-Fri 1700-0200Z†. Fuel avbl H24 with credit card—907-283-4542. Birds 10 NM radius spring-fall. Exc wx dvrsn unskd acct over 12,500 lbs 48 hr PPR. Ptns of trml ramp, Twy G and H not vsb fm ATCT. Rwy 02R outlined with cones. Rwy 20L outlined with cones. Tsnt and coml tie down slips avbl end of water canal. Tsnt prkg S trml ramp; hel prkg N trml ramp. Rwy 02R-20L not avbl for sked or unskd acr ops more than 30 pax seats. Lndg fee ovr 4000 lb. Twy A, B & E PCN 48; Twy C PCN 59; Twy F PCN 43; Twy D, J, K & L PCN 34. Arpt sand gradation lgr than FAA rcmd see AC150/5200-30.

AIRPORT MANAGER: 907-283-7951

WEATHER DATA SOURCES: ASOS 133.35 (907) 283-6513. LAWRS. (WX CAM)

COMMUNICATIONS: CTAF 121.3 ATIS 133.35

FSS ENA (KENAI)

KENAI RADIO 121.3 121.5 122.65 243.0 (LAA 121.3 when twr clsd)

④ **ANCHORAGE CENTER APP/DEP CON** 125.7 379.1

TOWER 121.3 (1500-0700Z† May 1-Sep 30; 1600-0600Z† Oct 1-Apr 30) **GND CON** 118.75

AIRSPACE: CLASS D svc 1500-0700Z† May 1-Sep 30, 1600-0600Z† Oct 1-Apr 30; other times CLASS E.

RADIO AIDS TO NAVIGATION: NOTAM FILE ENA.

(H) (H) **VOR/DME** 117.6 ENA Chan 123 N60°36.88' W151°11.71' 192° 2.9 NM to fld. 115/19E.

VOR unusable:
348°-015° byd 20 NM

DME unusable:
355°-041° byd 35 NM blo 2,000'

ILS/DME 108.9 I-ENA Chan 26 Rwy 20R. Class IE.

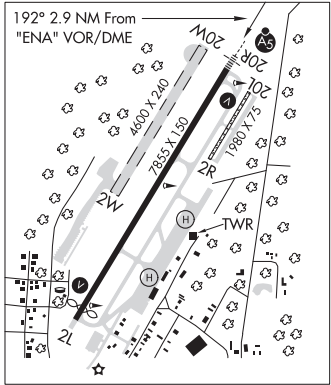
COMM/NAV/WEATHER REMARKS: Kenai FSS lcl 283-7211. For a toll free call to Kenai FSS dial 1-866-864-1737. Wx avbl from Kenai twr ATIS or from FSS when Kenai twr clsd.

WATERWAY 02W-20W: 4600X240 (WATER)

WATERWAY 20W: Rgt tfc.

SEAPLANE REMARKS: Waterway 02W-20W clsd to ops Nov-Apr. SPB ctld by Kenai ATCT durg ops hrs. When Kenai ATCT clsd wx avbl fm Kenai ATIS or Kenai FSS. Noise abatement proc in efct—amgr. TPA: Rwy 02W/20W 500' AGL. Rwy 20W rgt tfc. Water ldg area and twy chnl not vsb fm ATCT.

HELIPAD H1: H55X55 (ASPH)
HELIPAD H2: H55X55 (ASPH)



TREASURE CHEST (AA16) PVT 5 NNW UTC-9(-8DT) N60°37.49' W151°17.67'
125 TPA—825(700) NOTAM FILE Not insp.

SEWARD

RWY 16-34: 2700X100 (GRVL)

RWY 34: Rgt tfc.

RWY 02-20: 1370X100 (GRVL)

AIRPORT REMARKS: Unattended. Rwy 16-34 not mntnd. Ski ops at your own risk. Cond rpt—amgr.

AIRPORT MANAGER: 907-394-3579

COMMUNICATIONS: CTAF 121.3

COMM/NAV/WEATHER REMARKS: Ops annnc intrns to Salamatoff/Arness tfc—122.7. Ops in Class D/E asp trsn to Treasure Chest—Kenai ATCT CTAF.

KENAI RIVER AIRPARK (See SOLDOTNA on page 229)