

KENAI

DRIFT RIVER (3AK5) PVT 26 W UTC-9(-8DT) N60°35.33' W152°09.72'

MC GRATH

30 NOTAM FILE

H-1B, 2K, L-1A, 3D, 4F

RWY 05-23: 4100X150 (GRVL) MIRL

RWY 05: Trees.

RWY 23: Trees.

AIRPORT REMARKS: Unattended. Not mntnd. Tank farm and fac unatndd and non-opnl.

AIRPORT MANAGER: 907-283-6108

COMMUNICATIONS: CTAF 122.7 UNICOM 122.8

RADIO AIDS TO NAVIGATION: NOTAM FILE ENA.

KENAI (H) (H) VOR/DME 117.6 ENA Chan 123 N60°36.88'

W151°11.71' 248° 28.6 NM to fld. 115/19E.

VOR unusable:

348°-015° byd 20 NM

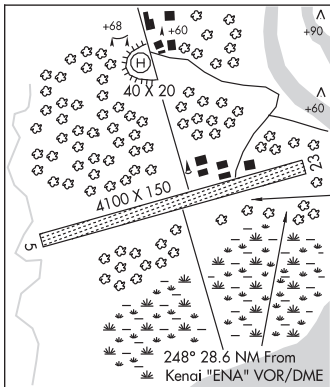
DME unusable:

355°-041° byd 35 NM blo 2,000'

COMM/NAV/WEATHER REMARKS: For a toll free call to Kenai FSS dial 1-866-864-1737.

• • • • •

HELIPAD H1: 40X20 (GRVL)



ISLAND LAKE SPB (2R3) 9 N UTC-9(-8DT) N60°42.27' W151°18.68'

ANCHORAGE

140 NOTAM FILE ENA

WATERWAY 06W-24W: 5000X500 (WATER)

SEAPLANE REMARKS: Attended Mon-Fri 1700-0200Z. No trans svcs avbl. Public access/boat ramp at north end of lake. Dock in disrepair.

AIRPORT MANAGER: 907-903-3355

COMMUNICATIONS: CTAF 122.7

COMM/NAV/WEATHER REMARKS: For a toll free call to Kenai FSS dial 1-866-864-1737.