

**JUNEAU INTL** (JNU)(PAJN) 7 NW UTC-9(-8DT) N58°21.28' W134°34.71'  
 25 B TPA—See Remarks AOE LRA Class I, ARFF Index C NOTAM FILE JNU  
**RWY 08-26:** H8857X150 (ASPH-GRVD) S-120, D-250, 2D-550  
 PCN 89 F/C/X/T HIRL CL

**JUNEAU**  
**H-1C, L-1B**  
**IAP, AD**

**RWY 08:** MALS.F. REIL. VASI(V2L)—GA 3.5° TCH 38'. RVR-TR Tower.  
 Rgt tfc.

**RWY 26:** MALS. REIL. PAPI(P4L)—GA 3.5° TCH 46'. RVR-TR

**RUNWAY DECLARED DISTANCE INFORMATION**

**RWY 08:** TORA-8857 TODA-8857 ASDA-8457 LDA-8457

**RWY 26:** TORA-8857 TODA-8857 ASDA-8457 LDA-8457

**SERVICE:** S4 FUEL 100LL, JET A1+ LGT For HIRL Rwy 08-26,  
 MALS.F Rwy 08 and REIL Rwy 26 ctc JNU twr on freq 118.7. When  
 twr closed ctc JNU FSS on freq 118.7. VASI Rwy 08 and PAPI Rwy  
 26 opr 24 hrs. Rwy 26 PAPI unusable byd 2 NM due to terrain. Rwy  
 08 VASI aligned aprx 13° rgt of rwy centerline and is not visible on rwy  
 centerline. Rwy 08 VASI unusable byd 06° left of course. Rwy 08  
 RLLS lgts. Rwy 26 MALS NSTD; length 800'.

**AIRPORT REMARKS:** Attended continuously. Fuel avbl thru arpt svcs on  
 UNICOM or 907-789-0055 or 907-789-5622. Cold temperature  
 airport. Altitude correction required at or below -0C. Wildlife and birds  
 on and invof arpt. Incr helicopter/lgt acft activity Apr 15-Oct 1 entire  
 length on Gastineau Channel and within 5 miles of arpt. Paragliding  
 activity 3 miles North of arpt invof Thunder Mtn and over Gastineau Channel  
 nears downtown Apr 15-Oct 1 6000' and blo. Airframe/powerplant svc  
 for single/twin propeller engine acft turbine and avionics. Mil contract  
 fuel avbl. National Guard 24 hr PPR due to ltd parking, C907-789-3366.  
 1630-0100Z weekdays ctc Guard Ops, 10 minutes prior to ldg on  
 124.65. Mountainous background restricts controllers visibility of apch  
 Rwy 26. Rwy visibility value Rwy 08 and Rwy 26 avbl. Apron terminal  
 ramp clsd to rotorcraft. Apron US CUSTOMS ramp clsd to acft with  
 wingspan more than 79' intl acft with wingspan more than 79' and  
 all intl rotorcraft use E-1 ramp (natl guard ramp). TPA 1500' AGL for  
 large turbine acft, 1000' AGL for fixed wing acft and 500' AGL for  
 helicopters. Rwy 08-26 sand used to enhance rwy friction may not  
 meet FAA specs. Ldg fee. See Special Notices and General Notices for  
 additional information on ops in Juneau area.

**AIRPORT MANAGER:** 907-789-7821

**WEATHER DATA SOURCES:** ASOS (907) 789-1243 LLWAS. (WX CAM)

**COMMUNICATIONS:** CTAF 118.7 UNICOM 122.95 ATIS 135.2

FSS JNU (JUNEAU)

JUNEAU RADIO 118.7 121.5 122.2 243.0

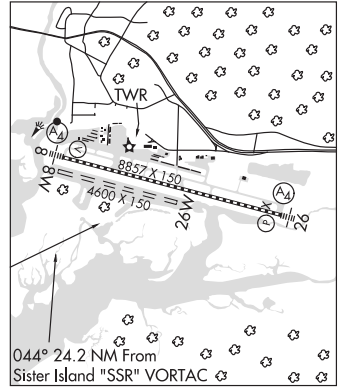
JUNEAU DOWNTOWN RCO 122.15 (JUNEAU FSS)

® ANCHORAGE CENTER APP/DEP CON 133.9

TOWER 278.3 118.7 120.7 (Apr 1-Sep 30 1500-0800Z‡, Oct 1-Mar 31 1600-0500Z‡) GND CON 121.9

NG OPS 124.65 64.70

**AIRSPACE:** CLASS D svc 1 Apr - Sep 30 1500-0800Z‡, 1 Oct-Mar 31 1600-0500Z‡; other times CLASS E.



**CONTINUED ON NEXT PAGE**

