

HOMER

BOOTLEGGERS COVE (2AK4) PVT 11 NW UTC-9(-8DT) N59°28.20' W151°30.75'

45 NOTAM FILE Not insp.

RWY 12-30: 1200X70 (GRVL)

RWY 30: Hill. Rgt tfc.

AIRPORT REMARKS: Unattended. Rwy 12, light on shore breeze creates 4 to 5 knot tailwind most summer days.

AIRPORT MANAGER: 907-235-7771

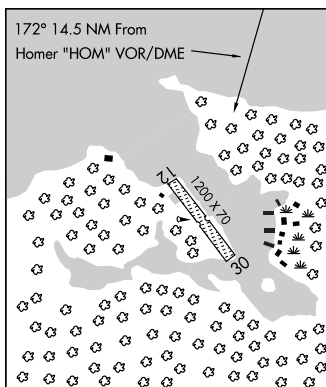
RADIO AIDS TO NAVIGATION: NOTAM FILE HOM.

HOMER (H) VOR/DME 114.6 HOM Chan 93 N59°42.57'

W151°27.40' 172° 14.5 NM to fld. 1626/15E.

COMM/NAV/WEATHER REMARKS: Local call to Homer FSS dial 235-8588. For a toll free call to Kenai FSS dial 1-866-864-1737

SEWARD
L-1A, 2I, 3D, 4F



HOMER (HOM)(PAHO) 2 E UTC-9(-8DT) N59°38.70' W151°29.15'

84 B TPA—See Remarks ARFF Index—See Remarks NOTAM FILE HOM

RWY 04-22: H6701X150 (ASPH-AFSC) S-62, D-70, 2D-189, 2D/2D2-130 PCN 55 F/B/X/T HIRL

RWY 04: MALSF. VASI(V4L)—GA 3.0° TCH 52'. Rgt tfc.

RWY 22: MALSR. VASI(V4L)—GA 3.0° TCH 55'. Tree.

SERVICE: S2 **FUEL** 100LL, JET A, B **LGT** ACTIVATE HIRL Rwy 04-22, VASI Rwy 04 and Rwy 22, MALSF Rwy 04 and MALSR Rwy 22—CTAF.

AIRPORT REMARKS: Attended Nov-Mar 1300-0530Z±, April-Oct 1500-0530Z±. Snow removal, wildlife ctl, cond reporting, and other afld maint svcs only avbl and valid dur arpt maint duty hrs. Ctc arpt mgmt for any after hrs req for afld svcs. Fuel: Call out fee after 0200Z± call 907-235-7969. Class I, ARFF Index A. PPR for air carrier ops with more than 30 pax seats write arpt mgr, 2336 Kachemak Dr., Homer, AK 99603. ARFF eqpt staffed during periods of air carrier ops only. Seabirds and migratory waterfowl invof arpt during spring and summer. Personnel and eqpt may be working on the rwy at any time. Lgtd helipad ctc 123.05. Reporting snow/ice and rwy conditions during maintenance duty hrs only. No line of site btn rwy ends. Noise abatement in effect 24 hrs daily: All aircraft conducting operations at Homer Airport and/or Seaplane Base cannot make flight turns until reaching the departure ends of Rwy 04-22. No exceptions. All deviations observed should be reported to the FAA safety hotline.. Twy A, Twy B South, Twy D and Twy E clsd to acft over 12,500 pounds. The grvl road along the south side of rwy is not a twy and is clsd to all acft. Transient general aviation parking on south side of rwy. Transient parking designated with green cones. 365' twr 9 NM West of arpt unlgtd. TPA 800 AGL for fixed wing acft, 600' AGL and below for rotary acft. Arpt sand larger gradation than FAA recommended/see AC150/5200-30.

AIRPORT MANAGER: 907-235-8872

WEATHER DATA SOURCES: ASOS 135.65 (907) 235-3603. (WX CAM)

COMMUNICATIONS: CTAF 123.6 AFIS 135.65 UNICOM 123.0

FSS HOM (HOMER) 1500-0630Z± OT ctc Kenai FSS.

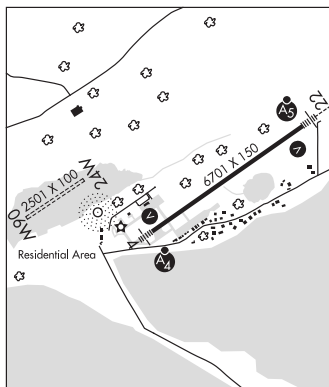
HOMER RADIO 121.5 122.2 123.6 243.0 (LAA 123.6)

RCO 121.5 122.2 123.6 243.0 (KENAI RADIO)

ANCHORAGE CENTER APP/DEP CON 125.9 270.3

AIRSPACE: CLASS E svc 1500-0630Z±; other times CLASS G.

SEWARD
H-1B, 2K, L-1A, 2J, 3D, 4F
IAP



CONTINUED ON NEXT PAGE

CONTINUED FROM PRECEDING PAGE

RADIO AIDS TO NAVIGATION: NOTAM FILE HOM.

(H) VOR/DME 114.6 HOM Chan 93 N59°42.57' W151°27.40' 178° 4.0 NM to fld. 1626/15E.

KACHEMAK NDB (HW) 277 ACE N59°38.48' W151°30.02' at fld. 17E.

LOC/DME 109.3 I-HOM Chan 30 Rwy 04. DME back course unusable byd 15° right of course. LOC back course unusable byd 15° right of course; byd 10 NM blo 2,700'; byd 12.8 NM blo 3,600'.

COMM/NAV/WEATHER REMARKS: For a toll free call to Kenai FSS dial 1-866-864-1737. Local call to Homer FSS dial 235-8588. AFIS operated by Homer FSS when open. Addn UNICOM freqs: 122.700, 123.050.

WATERWAY 06W-24W: 2501X100 (WATER)

HOMER-BELUGA LAKE SPB (5BL) 1 E UTC-9(-8DT) N59°38.49' W151°31.27'

KODIAK

25 B NOTAM FILE HOM

WATERWAY NE-SW: 3000X600 (WATER)

WATERWAY SW: Rgt ttc.

SERVICE: FUEL 100LL

SEAPLANE REMARKS: Unattended. Sfc cond not monitored recommend visual inspection prior to using. Waterfowl invof arpt. Fuel, available May-Sep, 907-299-5494. Windssock located at NW corner of lake. Freq recreational use. TPA 1000' AGL for fixed wing acft, 600' AGL and below for rotary acft. Public dock at NW corner of lake for loading/unloading only. Old piling beside public dock near shore. No transient tie downs avbl at public dock.

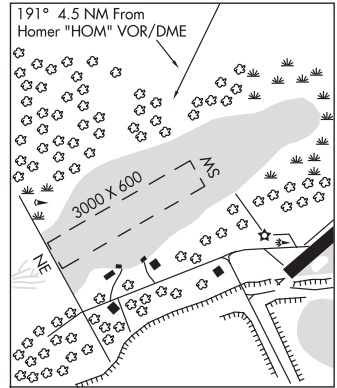
AIRPORT MANAGER: 907-235-8872

COMMUNICATIONS: CTAF 123.6

RADIO AIDS TO NAVIGATION: NOTAM FILE HOM.

(H) VOR/DME 114.6 HOM Chan 93 N59°42.57' W151°27.40' 191° 4.5 NM to fld. 1626/15E.

COMM/NAV/WEATHER REMARKS: Local call to Homer FSS dial 235-8588. For a toll free call to Kenai FSS dial 1-866-864-1737.



HONEYBEE LAKE AERO PARK (See WILLOW on page 272)