

GALBRAITH LAKE (GBH)(PAGB) 2 N UTC-9(-8DT) N68°28.78' W149°29.40'**POINT BARROW**

2663 B NOTAM FILE GBH

H-1A, L-4J

RWY 13-31: 5182X150 (GRVL) MIRL**RWY 13:** ODALS. REIL. PAPI(P2L)—GA 3.0° TCH 31'.**RWY 31:** PAPI(P2L)—GA 4.0° TCH 45'. Road.**SERVICE:** LGT Arpt rotating beacon oprs on photo cell switch. PAPI Rwy 31 unusable byd 2 NM. ACTIVATE ODALS Rwy 13—CTAF.**AIRPORT REMARKS:** Unattended. Limited snow removal. All arpt lighting (Rwy/VASI/RLLS) privately owned and operated. Recommend visual inspection prior to using rwy. Rwy condition not monitored. Rwy 13-31 has only 100' overruns.**AIRPORT MANAGER:** (907) 787-8959**COMMUNICATIONS:** CTAF 122.9**ANCHORAGE CENTER APP/DEP CON** 134.6**RADIO AIDS TO NAVIGATION:** NOTAM FILE AKP.**ANAKTUVUK PASS NDB (MHW)** 348 AKP N68°08.20'

W151°44.65' 046° 54.3 NM to fld. 2087/21E.

NDB unusable:

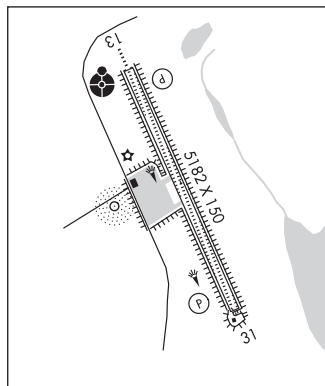
166°-181° byd 12 NM

186°-236° byd 21 NM blo 11,000'

286°-326° byd 20 NM

NDB (MHW) 417 GBH N68°28.74' W149°29.91' at fld.

2672/19E. NOTAM FILE GBH.

COMM/NAV/WEATHER REMARKS: For a toll free call to Fairbanks FSS dial 1-866-248-6516.**GALENA****EDWARD G PITKA SR** (GAL)(PAGA) 0 NW UTC-9(-8DT) N64°44.17' W156°56.10'**FAIRBANKS**

154 B NOTAM FILE GAL

H-1A, 2I, L-3C, 4I

RWY 08-26: H6000X150 (ASPH-CONC) S-110, D-144, 2D-240

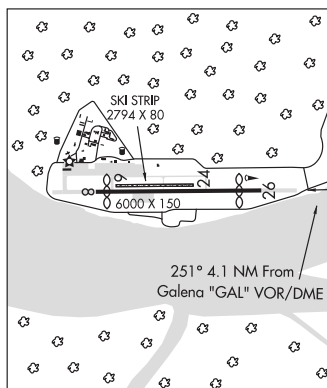
PCN 62 F/C/X/T HIRL

RWY 08: Thld dsplcd 400'.**RWY 26:** Thld dsplcd 800'. Tree.**RWY 06-24:** 2794X80 (GRVL)**SERVICE:** FUEL 100LL, JET A LGT ACTIVATE HIRL Rwy 08-26—CTAF.**AIRPORT REMARKS:** Attended Oct-Apr, Mon-Fri 1500-0200Z. Fuel, Sun-Sat 1700-0200Z. Call out fee after hrs 907-656-1875/7066.

Arpt maint duty hrs Mon-Fri 1700-0100Z except hol. Ultralights on and invof arpt. Acft may be closer to landing surface than they appear to pilot. Possible wind shear blw 2000' AGL on final apch Rwy 08-26. Cold temperature restricted airport. Altitude correction required at or below -33C. Snow removal ops monitor CTAF. Rwy 26 has frost heaves first 2000'. First usable 975' of Rwy 26 is conc that seasonally contain frost heaves, different in appearance and possibly braking action from remaining portion of rwy. Arpt hazardous reporting only performed dur duty hrs unless prior arrangement in writing with arpt mgmt, P.O. Box 09, Galena AK 99741.

AIRPORT MANAGER: 907-656-1236**WEATHER DATA SOURCES:** AWOS-3 132.525 (907) 656-2483. (WX CAM)**COMMUNICATIONS:** CTAF 123.0**GALENA RCO** 122.2 (FAIRBANKS RADIO)**ANCHORAGE CENTER APP/DEP CON** 127.0 290.2**AIRSPACE:** CLASS E.**RADIO AIDS TO NAVIGATION:** NOTAM FILE GAL.**GALENA (H) VORW/DME** 114.8 GAL Chan 95 N64°44.29' W156°46.63' 251° 4.1 NM to fld. 150/17E.

SHUTDOWN.

COMM/NAV/WEATHER REMARKS: For a toll free call to Fairbanks FSS dial 1-866-248-6516.**GALENA** N64°44.29' W156°46.63' NOTAM FILE GAL.**FAIRBANKS****(H) VORW/DME** 114.8 GAL Chan 95 251° 4.1 NM to Edward G Pitka Sr. 150/17E. SHUTDOWN.

H-1A, 2I, L-3C, 4I

RCO 122.2 (FAIRBANKS RADIO)