

CHENA RIVER SPB (Z25) 3 W UTC-9(-8DT) N64°49.97' W147°50.90'

FAIRBANKS

440 TPA—1000(560) NOTAM FILE FAI

WATERWAY N-S: 5000X300 (WATER)

WATERWAY E-W: 3000X300 (WATER)

SEAPLANE REMARKS: Unattended. Operating area in Chena River north and west of Fairbanks Intl arpt. PVT 900' X 50' grass strip adjacent river. All property along river bank is privately owned. Public access to river consists of one small gravel ramp. Public access ramp is at north end of Ravenwood Ave. N64-49.9' W147-52.5'

COMMUNICATIONS: CTAF 122.9

COMM/NAV/WEATHER REMARKS: For a toll free call to Fairbanks FSS dial 1-866-248-6516, for local call to Fairbanks FSS dial 907-474-0137.

FAIRBANKS INTL (FAI)(PAFA) 3 SW UTC-9(-8DT) N64°48.91' W147°51.39'

FAIRBANKS

439 B LRA Class I, ARFF Index C NOTAM FILE FAI

H-1B, 2K, L-3A, 3D, 4J

RWY 02L-20R: H11800X150 (ASPH-GRVD) S-75, D-220, 2D-580,

IAP, DIAP, AD

2D/2D2-1100 PCN 78 F/A/W/T HIRL CL

RWY 02L: ALSF2. TDZL. PAPI(P4L)—GA 3.0° TCH 73'. RVR-TMR Thld dsplcd 750'. Tree.

RWY 20R: MALSR. PAPI(P4L)—GA 3.0° TCH 74'. RVR-TMR Thld dsplcd 750'. Tree.

RWY 02R-20L: H6501X100 (ASPH) MIRL

RWY 02R: PAPI(P4L)—GA 3.0° TCH 40'. Trees. Rgt ttc.

RWY 20L: REIL. PAPI(P4L)—GA 3.0° TCH 41'.

RWY 02-20: 2900X75 (GRVL-DIRT)

RUNWAY DECLARED DISTANCE INFORMATION

RWY 02L:TORA-11800 TODA-12800 ASDA-11800 LDA-11050

RWY 20R:TORA-11800 TODA-12800 ASDA-11800 LDA-11050

SERVICE: S4 FUEL 100LL, JET A1 OX 1, 2 LGT Rwy 20R PAPI unusable byd 8° right of centerline.

AIRPORT REMARKS: Attended continuously. See additional pages under

notices for TRSA and Fairbanks area information. N/S twy (Twy A) is west and parallel to Rwy 02L-20R. Be alert to avoid ldg on twy. Transient parking east ramp for acft with wingspan less than 79 FT.

No transient acft parking on west ramp, ctc arpt ops 907-451-2300

for info and Medivac parking. Be alert for snow removal equipment ops from 1 Oct to 15 May. Migratory birds in vicinity

of arpt during Spring thru Fall. For availability of grvl strip Rwy 02-20 and winter ski strip Rwy 02-20 consult local

NOTAMS and ctc twr prior to arrival/departure. For transient helicopter parking call arpt ops 907-451-2300. Tfc pat alt

(single engine reciprocating acft) 1500' MSL. Tfc pat alt (all multi-engine, large and turbine-powered acft) 2000' MSL.

Noise abatement procedures in effect fm 0700-1700Z‡ all large acft, turbine engine, and heavy acft utilize Rwy 02L for

arrivals and Rwy 20R for departures when wind is not an opr factor. Ctc arpt ops for engine run-up locations. NE compass

rose CLOSED to helicopters over 12500 lbs. Frost heaves south 2600' Rwy 02R-20L contact arpt opr 907-451-2300

with safety concerns. Cold temperature airport. Altitude correction required at or below -32C. All rwy hold lines and

compass rose at Twy W obscured October 1 thru April 1. Rwy 02R-20L is limited for use by acft design Group B II, acft

or smaller. Rwy 02-20 not avbl for scheduled or unscheduled acf ops with more than 30 psgr seats. Rwy 02R-20L not

avbl for scheduled or unscheduled acf ops with more than 30 psgr seats.

AIRPORT MANAGER: 907-474-2500

WEATHER DATA SOURCES: ASOS 124.4 (907) 474-8036. (WX CAM)

COMMUNICATIONS: SFA ATIS 124.4 907-456-1244 (TIE-IN FSS FAIRBANKS FAI-NOTAM FAI)

RADIO 122.2 124.1 132.65 255.4 (E)

Ⓡ APP CON 125.35 363.2 (180°-359°) 127.1 251.1 (360°-179°) 119.85 (E)

TOWER 118.3 257.8 (E) GND CON 121.9 CLNC DEL 127.6

Ⓡ DEP CON 125.35 363.2 (180°-359°) 127.1 251.1 (360°-179°) 327.1 (E)

SUAIS (Eielson Range Control) 125.3.

AIRSPACE: CLASS D.

TRSA svc ctc APP CON

RADIO AIDS TO NAVIGATION: NOTAM FILE FAI.

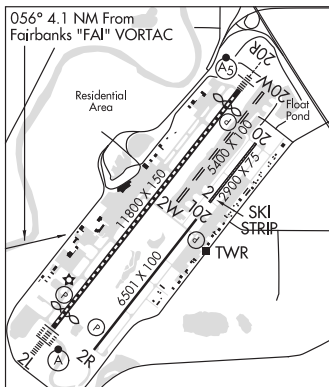
(H) VORTACW 108.6 FAI Chan 23 N64°48.00' W148°00.72' 056° 4.1 NM to fld. 1526/21E.

TACAN AZIMUTH unusable:

065°-100° byd 30 NM

270°-330° byd 10 NM blo 10,000'

270°-330° byd 30 NM



CONTINUED FROM PRECEDING PAGE

CHENA NDB (HW) 257 CUN N64°50.32' W147°29.70' 244° 9.4 NM to fld. 462/17E.
 ILS/DME 109.1 I-CNA Chan 28 Rwy 02L. Class IIIE. DME unusable byd 025° left of course.
 ILS/DME 110.3 I-FAI Chan 40 Rwy 20R. Class IIE.

COMM/NAV/WEATHER REMARKS: For a toll free call to Fairbanks FSS dial 1-866-248-6516, for a local call to Fairbanks FSS dial (907) 474-0137. TACAN located N64°48.01' W148°00.81'. (Although colocated facilities antennae are at different positions). For flights in MOA's east of Fairbanks recommend contacting Eielson Range Control on 125.3/126.3 or call 1-800-758-8723 for information on military activities. NWS weather balloon launch site 2000 feet west of midfield Runway 02L-20R. Launches are twice daily at 1100 and 2300 UTC.

WATERWAY 02W-20W: 5400X100 (WATER)

WATERWAY 02W: Fence.

WATERWAY 20W: Fence.

AIRPLANE REMARKS: SPB controlled by Fairbanks Intl ATCT. Ctc ATCT on freq 118.3 as soon as practical after start up for taxi on the pond. Float pond tfc as assigned by Fairbanks ATCT. Limited transient float plane parking avbl, ctc 907-455-4571 for information. Sfc frozen in winter, not monitored.

GOLD KING CREEK (AK7)(PAAN) 39 SE UTC-9(-8DT) N64°11.88' W147°55.72'

FAIRBANKS

1720 NOTAM FILE FAI

RWY 09-27: 2558X17 (GRVL-DIRT)

RWY 09: Trees.

RWY 27: Brush.

AIRPORT REMARKS: Unattended. Rwy condition not monitored, recommend visual inspection prior to landing. 20' trees on both sides of rwy within 60-70' of centerline. Rwy 09-27 rocks up to 6" on sfc. No services avbl.

AIRPORT MANAGER: (907) 451-5280

COMMUNICATIONS: CTAF 122.9

COMM/NAV/WEATHER REMARKS: For a toll free call to Fairbanks FSS dial 1-866-248-6516, for local call to Fairbanks FSS dial 907-474-0137.

LAKLOEY AIR PARK (AK22) PVT 6 E UTC-9(-8DT) N64°49.30' W147°31.30'

FAIRBANKS

475 NOTAM FILE Not insp.

H-1B, L-3A, 3D, 4J

RWY 06-24: 4000X50 (GRVL)

RWY 06: Trees. Rgt tfc.

AIRPORT REMARKS: Unattended. Rwy not maintained or monitored, recommend visual inspection prior to using. No facilities. Unusable for wheels in the fall, winter, spring. PPR for transient acft, write to Lakloey Airpark, P.O. Box 58388, Fairbanks AK 99711.

AIRPORT MANAGER: 907-488-1724

COMMUNICATIONS: CTAF 125.0

COMM/NAV/WEATHER REMARKS: For a toll free call to Fairbanks FSS dial 1-866-248-6516, for local call to Fairbanks FSS dial 907-474-0137.

WATERWAY 06W-24W: 3400X100 (WATER)

WATERWAY 06W: Trees. Rgt tfc.

METRO FLD (MTF) PVT 2 S UTC-9(-8DT) N64°48.41' W147°45.75'

FAIRBANKS

432 TPA-1000(568) NOTAM FILE

H-1B, L-3A, 3D, 4J

RWY 06-24: H4600X80 (ASPH-GRVL)

RWY 06: Road. Rgt tfc.

AIRPORT REMARKS: Unattended. Rwy 06-24 2600 ft x 30 ft paved on Rwy 06 end. Pavement very rough. Rwy condition not monitored, recommend visual inspection prior to use. 140' crane btn rwy and float pond summer months. Ditch and berm 40' from Rwy 06.

AIRPORT MANAGER: 907-388-3053

WEATHER DATA SOURCES: SAWRS.

COMMUNICATIONS: CTAF 118.3

SUAIS 125.3 126.3 (1-800-758-8723).

COMM/NAV/WEATHER REMARKS: For a toll free call to Fairbanks FSS dial 1-866-248-6516, for local call to Fairbanks FSS dial 907-474-0137.